



ODOT Vegetation Management Program



ODOT Vegetation Management

- **Primary focus is safety**
 - Sight distance on curves
 - Shading/overhangs
 - Sign visibility
 - Hazard tree removal
 - Preservation of pavement and other features



ODOT Vegetation Management

- **Other Considerations**

- State and Federal laws
 - Executive Order on Invasive Species
 - Dept. of Agriculture weed control policy
 - Environmental- Migratory Bird Treaty Act, Endangered Species Act
- Local requirements and ordinances
 - Fire restrictions
 - County Weed Board requirements
 - Adjacent Property Owners
- Federal land management requirements



ODOT Vegetation Management

- **Level of Service (Desired Conditions)**
 - Defined zones of vegetation management based on primary function of road or right of way (pavement drainage, ditch drainage, right of way)
 - Defined goals for each zone
 - Describes target thresholds for all vegetation within zone based on function of zone
 - Describes expected outcome for vegetation



- Desired Conditions

**Shoulder 4ft-
Little or No
Vegetation**



Hwy 101 Neskowin



- **Desired Conditions**

**Ditch- No Obstructions to
Features, No Noxious
Weeds**



Hwy 101 Neskowin



- **Desired Conditions**

**Back Slope to Edge of R.O.W.-
Remove Hazard Trees, No
Obstructions to Features, No
Noxious Weeds**



Hwy 101 Neskowin



- **Desired Conditions**

**Guardrail- Little or No
Vegetation Growing Under or
Covering Guardrail**



Hwy 22 East of Salem

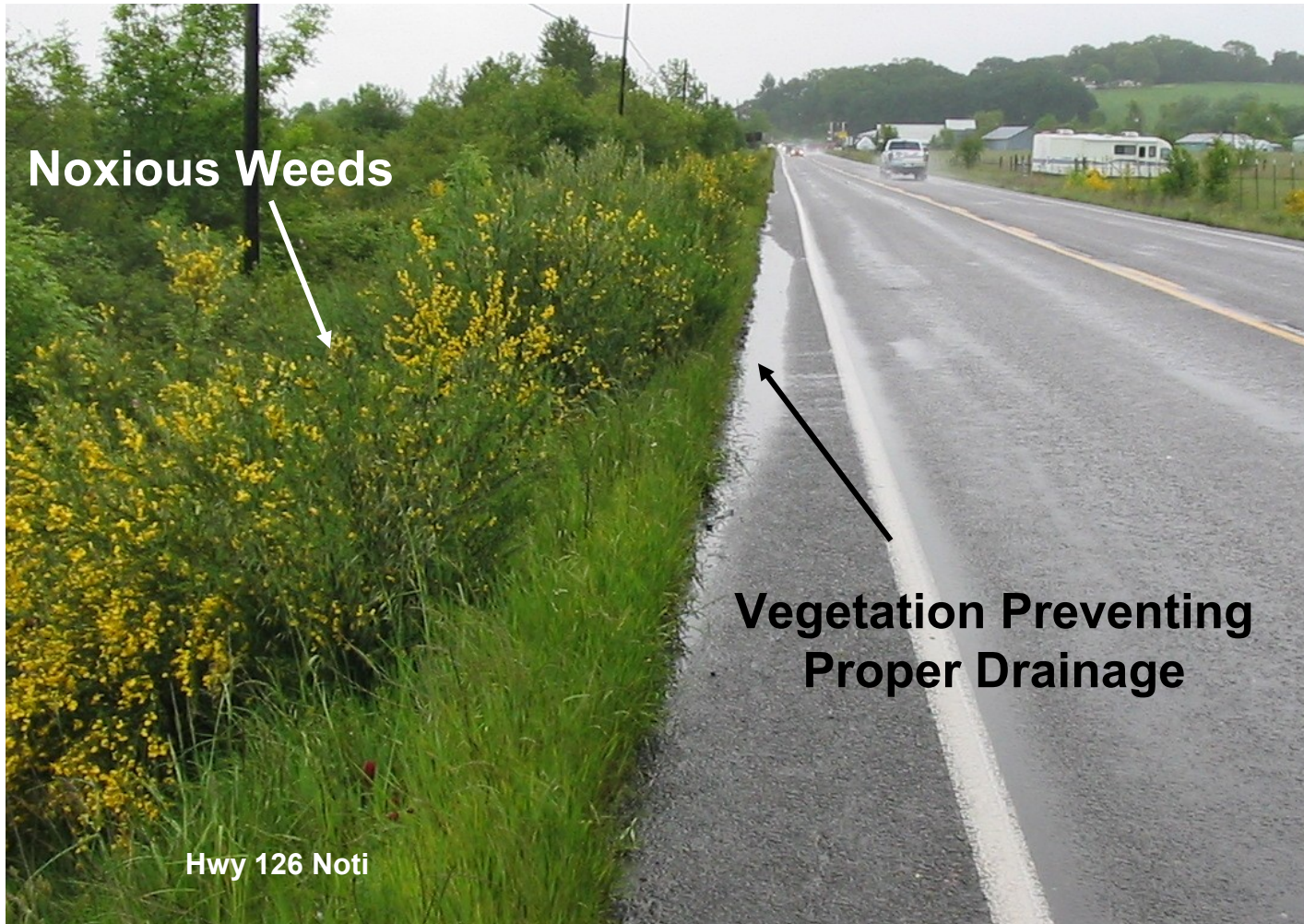


- Undesirable Conditions





- Undesirable Conditions



Noxious Weeds

Vegetation Preventing Proper Drainage

Hwy 126 Noti



- Undesirable Conditions



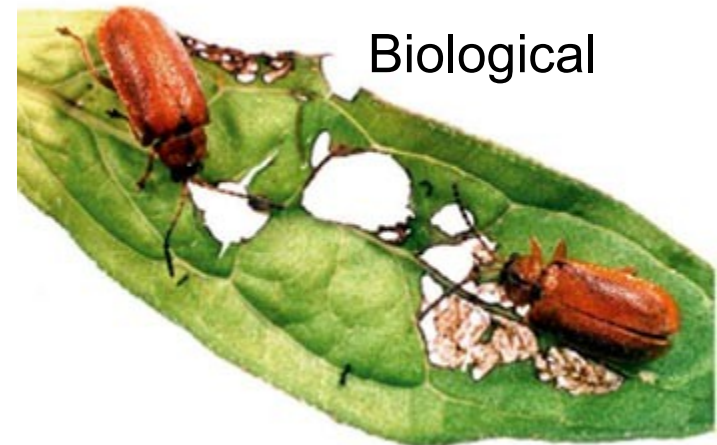


***Desired Conditions:
How do we get there?***



ODOT Vegetation Management

- Integrated Approach (ORS 634.650)





ODOT Vegetation Management

- Evaluating Mechanical Alternatives





ODOT Vegetation Management

- Additional Releases of Biological Controls in Coordination with ODA





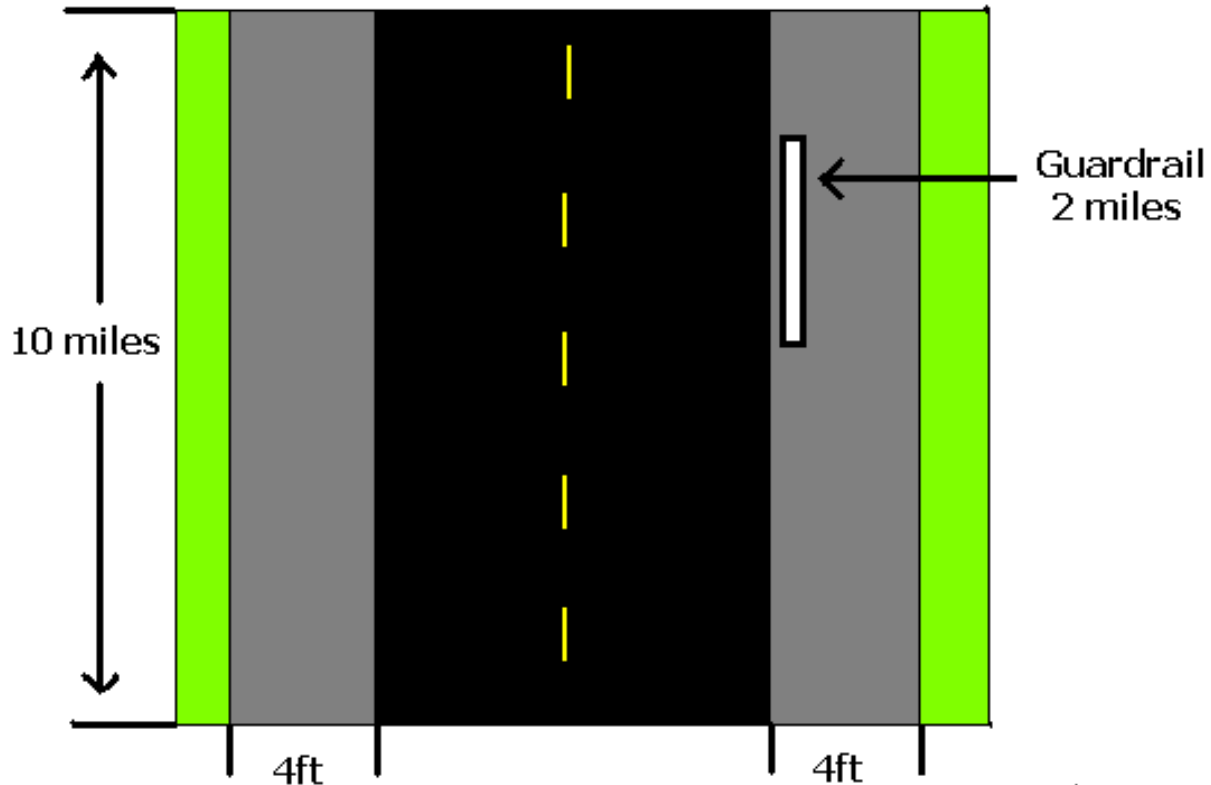
- **Herbicide Use Best Management Practices**
 - Follow EPA Product Labels
 - Appropriately License Applicators
 - Use Least Toxic Herbicide to Achieve Desired Results



- **Evaluating Least Toxic Herbicides**
 - Review of EPA Product Labels
 - Review of California Prop 65 Hazardous Material Notification list
 - Review of 2003/2005 WasDot Herbicide Risk Assessment



Roadside Vegetation Cost Estimate



**Example: 2 lanes x 10 miles =
20 miles of 4 ft shoulder**

**Guardrail: approx. 10% of total miles: 2 lanes x 10miles
x10% = 2 miles of guardrail**



Vegetation Management with Herbicides



- **Herbicide Application**

- Cost: \$111 per mile
- Frequency: Once annually
- Annual cost: \$111 per mile x 20 miles =
\$2,220



**Vegetation Management
without Herbicides : Mowing,
Shoulder Blading and Guardrail
Vegetation Management**



- **Mowing**

- Cost: \$367 per mile
- Frequency: Twice annually
- Annual Cost: \$367 per mile x *18 miles x 2 times per year = **\$7,340**

*20 total miles less 2 miles of guardrail



- **Shoulder Blading**

- Estimated 50% increase in Shoulder Blading from every three years to every other year
- Annual Cost - $\$306 \div 3 \times 2 \times *18$ miles
= **\$3,672**

*20 total miles less 2 miles of guardrail



- **Guardrail Vegetation Maintenance**
 - Cost- \$1,271 per Guardrail mile
 - Frequency – 1.5 times per year
 - Annual cost – 2 miles x 1.5 x \$1,271 =
\$3,813



Roadside Vegetation Cost Estimate Summary

- Shoulder Herbicide Application
 - Annual cost: **\$2,220**
- No- Herbicide – Mowing, Shoulder Blading and Guardrail Vegetation Maintenance
 - Annual Cost: **\$20,697**
- Difference for 20 miles
 - Additional Annual Cost: **\$18,477**



Proposed Policy Option Package

- “Last Resort” Herbicide Spray Pilot Project
 - For all State highways in Lane County and on US 101 from Lane County to the Columbia River
 - Time Period: 2009-2011 biennium
 - Herbicide spray reduced to:
 - Noxious and invasive weeds
 - Behind and around guardrail
 - Areas of specific need



Proposed Policy Option Package

- Proposed Cost of \$2.25 million includes:
 - Additional vegetation management equipment and expenses
 - 1 FTE Transportation Maintenance Coordinator 2 to:
 - Manage the program
 - Monitor roadside vegetation
 - Verify costs and alternative vegetation management techniques



Questions?