

Washington Toxics Coalition vs. EPA  
Court Order for Injunctive Relief  
Effective February 5, 2004

## Lane County

### Maps Of Streams Subject To Buffer Zones Requirements For Certain Active Ingredients

#### Species Affected by Federal Court Order in Lane County

1. Coho Salmon, Map #1 (Oregon Coast Coho ESU) - 5/12/08
2. Chinook Salmon, Map #2 (Upper Willamette Chinook ESU) – 1/14/05

This document is intended to assist you in determining if buffer restrictions are required for applying certain pesticide active ingredients near specific bodies of water. Follow the steps below to determine if your use of pesticides will be affected by this court order:

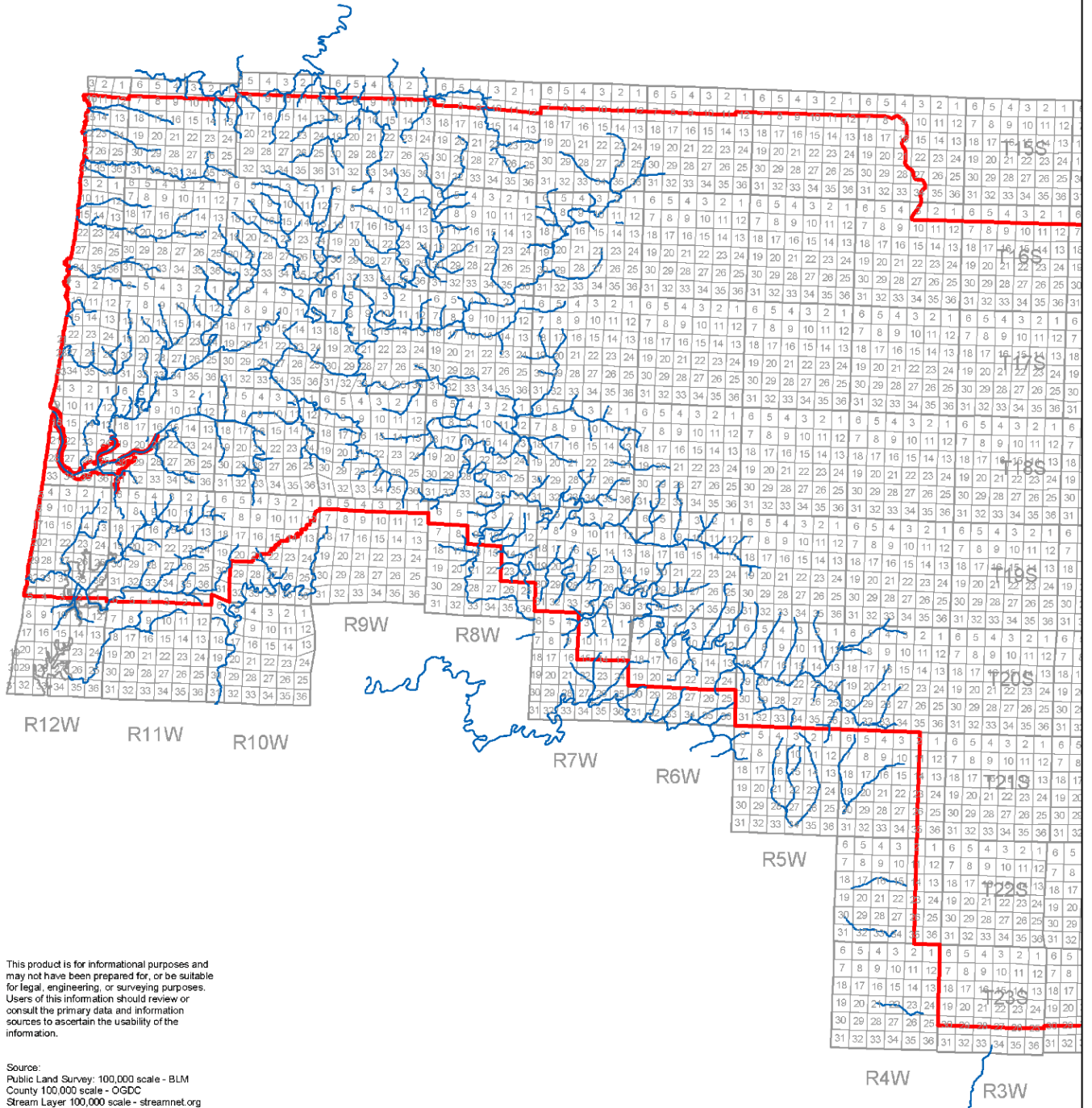
1. Proceed to the attached maps to determine which township, range and section your application site is located within. You may use the zoom feature in adobe acrobat to view details of a particular area within the map. You must check your location on each map.
2. Note any streams or rivers that are adjoining the intended application site. If you are unsure if the application site is adjacent to a depicted stream, please contact ODA pesticides division at 503-986-4635 for further instruction.
3. If there are no listed streams or rivers adjoining the application site, then the court order is not applicable to your situation. No buffer zones will be required. Follow all label directions and restrictions.
4. If the land that you will be applying to is adjoining one or more depicted streams, consult the list of active ingredients following each map. If any of the active ingredients are found in the pesticide product(s) you intend to use, then a buffer must be observed. Buffer zones are 20 yards by ground or 100 yards by air from the ordinary high water mark of the stream unless otherwise indicated.

Disclaimer: Due to the scale of this map, not all stream names could be provided. If a stream is not named on this map, but is depicted by a line, it is still subject to the buffer zone restrictions. This map was created based on data from other agencies and organizations and is subject to change. The active ingredient list following each map may change. Make sure you have the most recent version of this document.



# Lane County

Coho (see following page for stream names)



This product is for informational purposes and may not have been prepared for, or be suitable for legal, engineering, or surveying purposes. Users of this information should review or consult the primary data and information sources to ascertain the usability of the information.

Source:  
Public Land Survey: 100,000 scale - BLM  
County 100,000 scale - OGDC  
Stream Layer 100,000 scale - streamnet.org



**Oregon**  
Department  
of Agriculture



## Stream names for Lane County Coho map.

Ackerley Creek	East Fork Green River	Little Lake Creek	San Antone Creek
Alder Creek	East Fork Lobster Creek	Little Sand Creek	Sand Creek
Bailey Creek	Edris Creek	Little Siuslaw Creek	Sandy Creek
Barber Creek	Elk Creek	Lobster Creek	School Fork
Bear Creek	Elkhorn Creek	Long Creek	Schrum Creek
Beaver Creek	Elma Creek	Lucas Creek	Schultz Creek
Beech Creek	Esmond Creek	Luyne Creek	Schwartz Creek
Bell Creek	Failor Creek	Maple Creek	Shady Creek
Bend Creek	Farman Creek	Maria Creek	Shaw Creek
Bennet Creek	Fawn Creek	McGowan Creek	Shoemaker Creek
Berkshire Creek	Fendall Creek	McKinney Creek	Shultz Creek
Bernhardt Creek	Fiddle Creek	McLeod Creek	Siltcoos Lake
Berry Creek	Fish Creek	McVey Creek	Siltcoos River
Bierce Creek	Five Rivers	Meadow Creek	Siuslaw River
Big Creek	Fivemile Creek	Mercer Creek	Sleezer Creek
Bill Lewis Creek	Fowler Creek	Mill Creek	Smith Creek
Billie Creek	Fryingpan Creek	Miller Creek	Smith River
Billy Moore Creek	Gall Creek	Mills Creek	Smoot Creek
Bob Creek	Gardner Creek	Misery Creek	South Fork Bear Creek
Bottle Creek	Gibson Creek	Morris Creek	South Fork Lobster Creek
Bounds Creek	Grant Creek	Munsel Creek	South Fork Siuslaw River
Brush Creek	Grass Creek	Nelson Creek	South Fork Tenmile Creek
Buck Creek	Green Creek	Norris Creek	South Inlet
Bulmer Creek	Green River	North Creek	Squaw Creek
Burntwood Creek	Greenleaf Creek	North Fork Cape Creek	Steinhauer Creek
Cabin Creek	Grenshaw Creek	North Fork Indian Creek	Stokes Creek
Camp Creek	Hadsall Creek	North Fork Siuslaw River	Stump Creek
Cape Creek	Haight Creek	North Fork Smith River	Sulphur Creek
Carle Creek	Haney Creek	North Prong Maple Creek	Summers Creek
Carter Creek	Hanson Creek	North Sister Creek	Summit Creek
Cataract Creek	Haring Creek	Oat Creek	Sutton Creek
Cattle Creek	Harlan Creek	Old Man Creek	Swamp Creek
Cedar Creek	Harry Creek	Oxbow Creek	Swartz Creek
Chappell Creek	Haskins Creek	Panther Creek	Sweet Creek
Chickahominy Creek	Hawley Creek	Pass Creek	Swing Log Creek
Clay Creek	Haynes Creek	Pat Creek	Taylor Creek
Clear Creek	Hefty Creek	Pataha Creek	Tenmile Creek
Cleveland Creek	Helms Creek	Patterson Creek	Thompson Creek
Coal Creek	Henderson Creek	Paxton Creek	Tip Davis Creek
Collins Creek	Herman Creek	Pearl Creek	Trail Creek
Condon Creek	Hoffman Creek	Peterson Creek	Tucker Creek
Congdon Creek	Holland Creek	Pheasant Creek	Turner Creek
Conger Creek	Hollenbeck Creek	Pittenger Creek	Uncle Creek
Conrad Creek	Hood Creek	Pontius Creek	Unnamed Stream
Cook Creek	Hula Creek	Pope Creek	Van Curen Creek
Coon Creek	Indian Creek	Porter Creek	Velvet Creek
Cougar Creek	Jeans Creek	Post Creek	Waite Creek
Crab Creek	Johnson Creek	Potato Patch Creek	Walker Creek
Crazy Creek	Jordan Creek	Preacher Creek	Wapiti Creek
Crema Creek	Karnowsky Creek	Pugh Creek	Warden Creek
Cummins Creek	Keller Creek	Pyle Creek	West Branch North Fork Smith River
Curtis Creek	Kelly Creek	Quarry Creek	West Fork Deadwood Creek
Dahlin Creek	Kentucky Creek	Raleigh Creek	West Fork Indian Creek
Deadwood Creek	Kirk Creek	Rath Creek	Wheeler Creek
Deer Creek	Kline Creek	Redford Creek	Whittaker Creek
Demming Creek	Knapp Creek	Roache Creek	Wildcat Creek
Dinner Creek	Knowles Creek	Rock Creek	Wilhelm Creek
Divide Creek	Lake Creek	Rogers Creek	Woahink Creek
Doe Creek	Lane Creek	Russell Creek	Woahink Lake
Doe Hollow Creek	Leibo Canyon	Ryan Creek	Wolf Creek
Dogwood Creek	Leopold Creek	Ryder Creek	Yachats River
Douglas Creek	Letz Creek	Saleratus Creek	
Drew Creek	Levage Creek	Salmonberry Creek	
Druggs Creek	Lick Creek	Salt Creek	
Duncan Inlet	Liebre Creek	Sam Creek	
Eames Creek	Lindsley Creek		
East Fork Brush Creek	Little Cummins Creek		

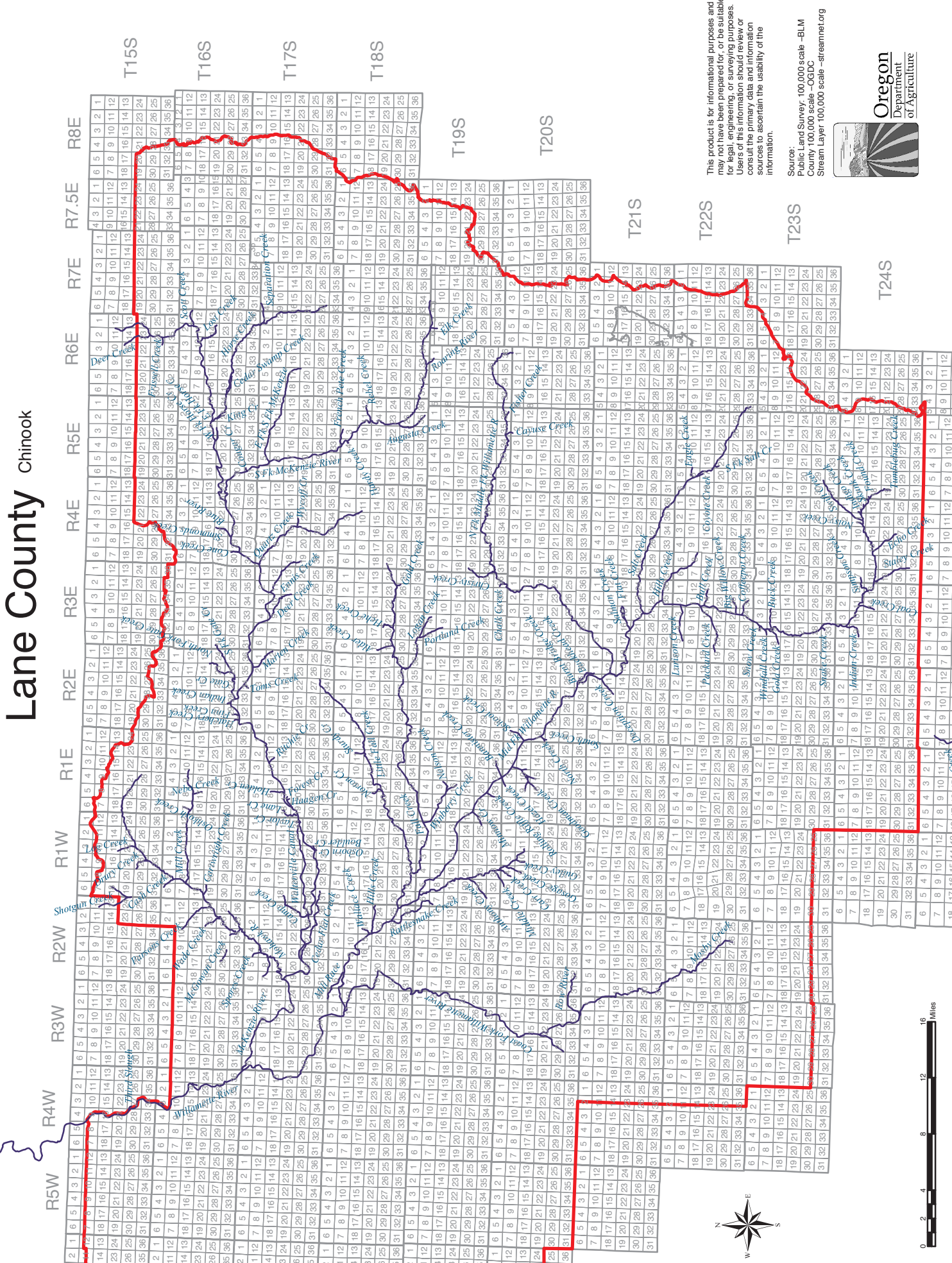
Pesticide active ingredients with buffer zone requirements for Oregon Coast Coho Streams\*:

1. 2,4-D (aquatic uses only)
2. Azinphos-methyl (Guthion)
3. Carbaryl (Sevin)
4. Chlorpyrifos (Dursban, Lorsban)
5. Diazinon (many brand names)
6. Dimethoate (Cygon)
7. Diuron (Direx, Karmex)
8. Fenbutatin-oxide (Vendex)
9. Malathion (many brand names)
10. Methomyl (Lannate)
11. Metolachlor (Dual)
12. Phorate (Thimet)
13. Triclopyr BEE (Garlon 4)

\* Note: Some active ingredients and application methods (for any active ingredient on this list) may have different buffer variations. For specific buffer zone variations, please refer to the text of the court order, which can be found on our website:

<http://oda.state.or.us/pesticide/lawsregs/buffers.html>

# Lane County Chinook



This product is for informational purposes and may not have been prepared for, or be suitable for, legal, engineering, or surveying purposes. Users of this information should review or consult the primary data and information sources to ascertain the usability of the information.

Source:  
 Public Land Survey: 100,000 scale -BLM  
 County 100,000 scale -OGDC  
 Stream Layer 100,000 scale -streamnet.org



Oregon  
 Department  
 of Agriculture



0 2 4 6 8 10 12 14 16 Miles

Pesticide active ingredients with buffer zone requirements for Upper Willamette River Chinook Streams\*:

1. 2,4-D (aquatic uses only)
2. Azinphos-methyl (Guthion)
3. Bensulide (Prefar)
4. Bromoxynil (Buctril)
5. Carbaryl (Sevin)
6. Chlorothalonil (Bravo)
7. Chlorpyrifos (Dursban, Lorsban)
8. Diazinon (many brand names)
9. Dimethoate (Cygon)
10. Diuron (Direx, Karmex)
11. Ethoprop (Mocap)
12. Fenbutatin-oxide (Vendex)
13. Malathion (many brand names)
14. Methidathion (Supracide)
15. Methomyl (Lannate)
16. Methyl-parathion (Penncap-M)
17. Metolachlor (Dual)
18. Naled (Dibrom)
19. Phorate (Thimet)
20. Propargite (Omite, Comite)
21. Triclopyr BEE (Garlon 4)
22. Trifluralin (Treflan)

\* Note: Some active ingredients and application methods (for any active ingredient on this list) may have different buffer variations. For specific buffer zone variations, please refer to the text of the court order, which can be found on our website:

<http://oda.state.or.us/pesticide/lawsregs/buffers.html>