

Lane County Schools and Forestry Spray Mapping Project 1990 – 2006

Camp Creek Elementary School

Springfield School District ~ Springfield, Oregon

Presented by
Oregon Toxics Alliance and Forestland Dwellers

*Mapped using data from Oregon Department of Forestry
Forest Activity Computerized Tracking System (FACTS)*





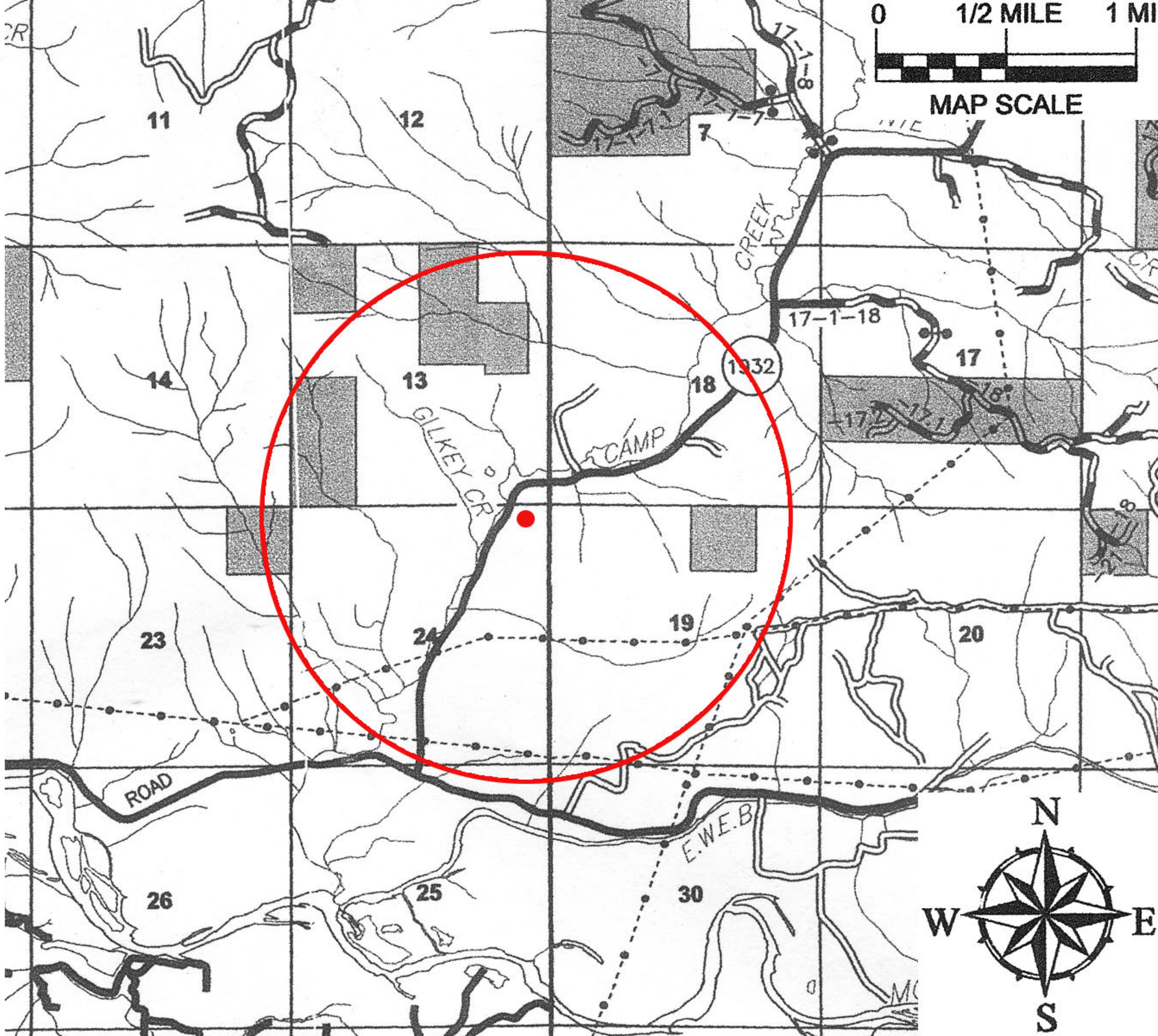
Map Notes

Red Dot is School Location

Red Circle denotes a one-mile radius
geographical marker to give a sense
of distance from the school

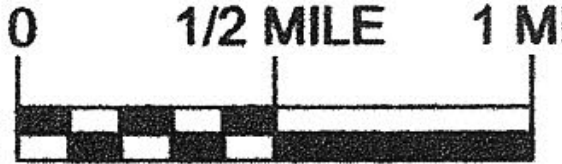
Colored Areas are Sprayed

Camp Creek
School

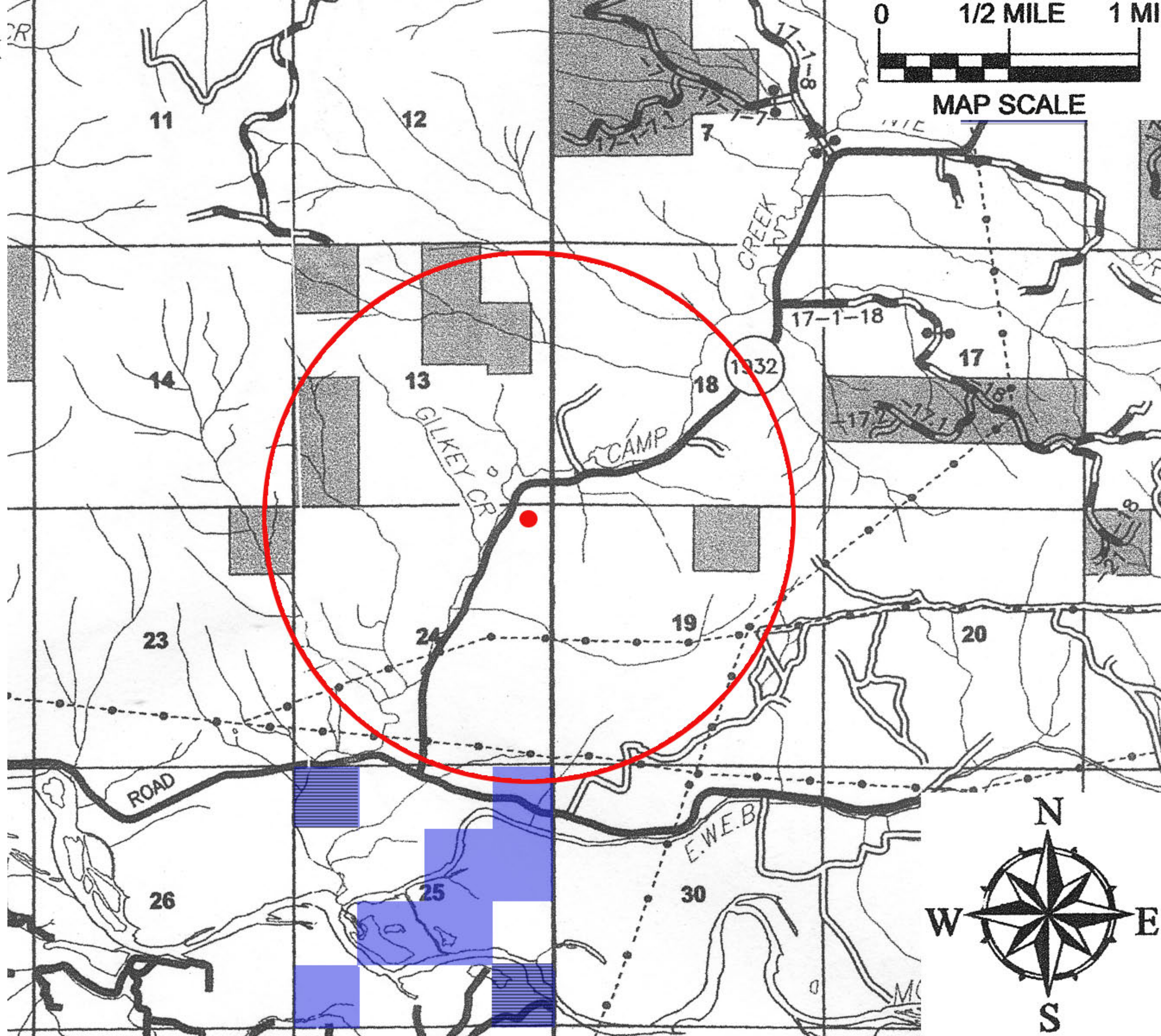


Camp Creek
School

Legend
1990



MAP SCALE



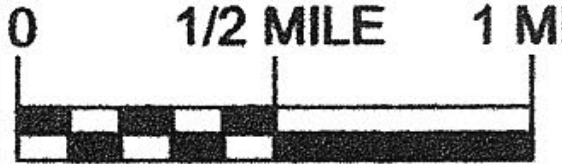
Aerial
Roadside

Camp Creek
School

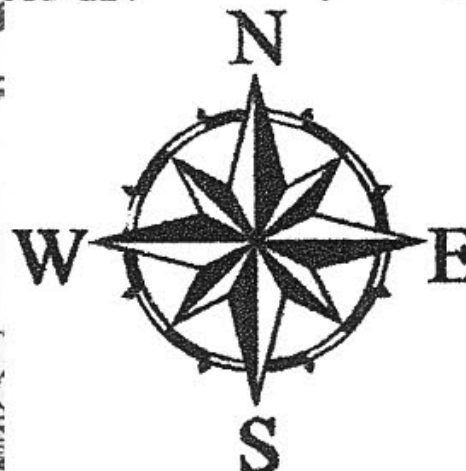
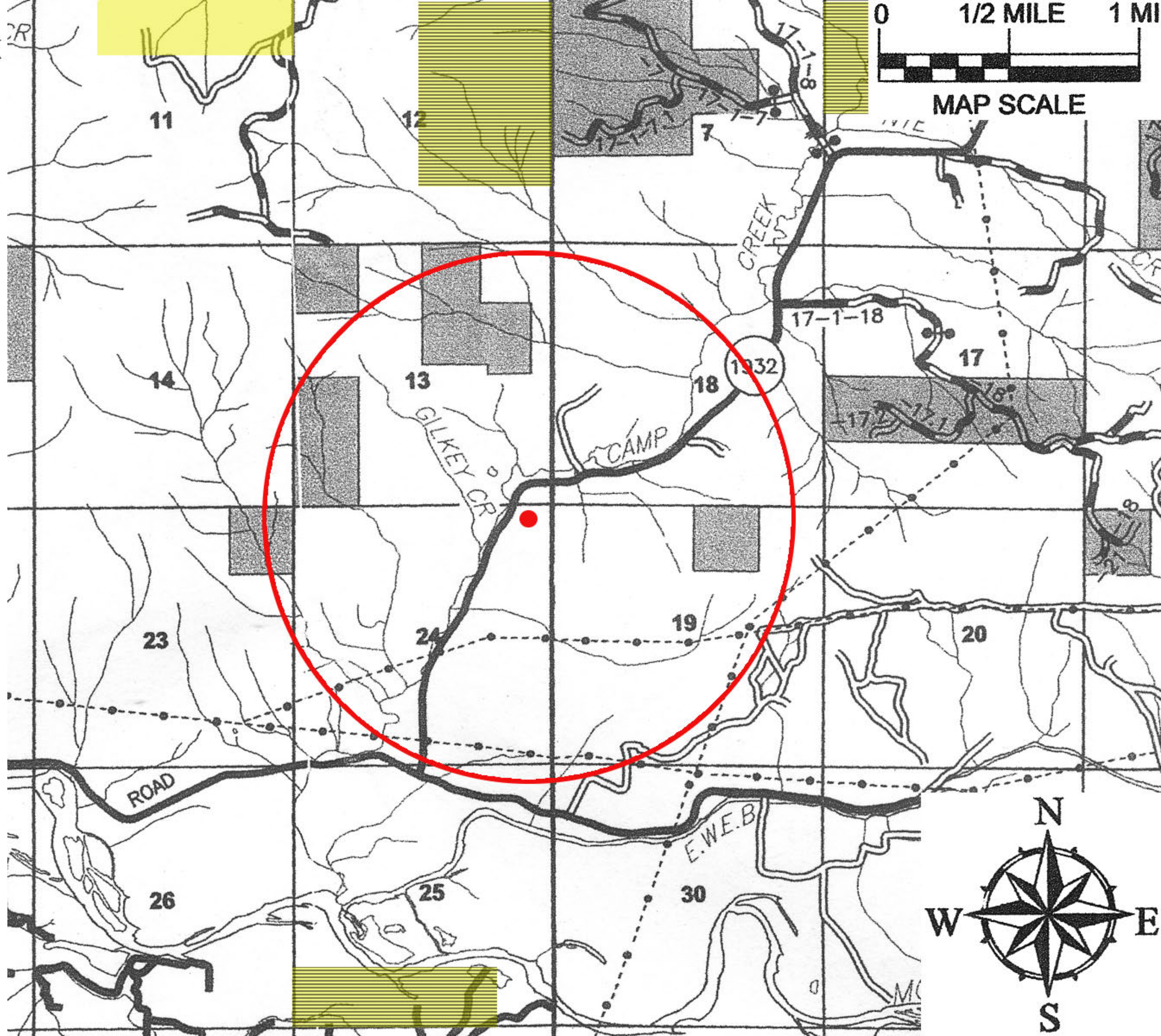
Legend

1991

Aerial
Roadside



MAP SCALE

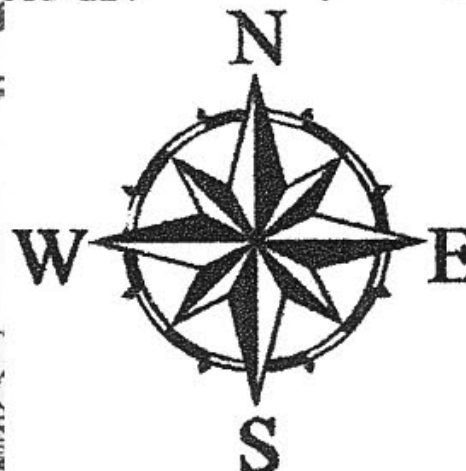
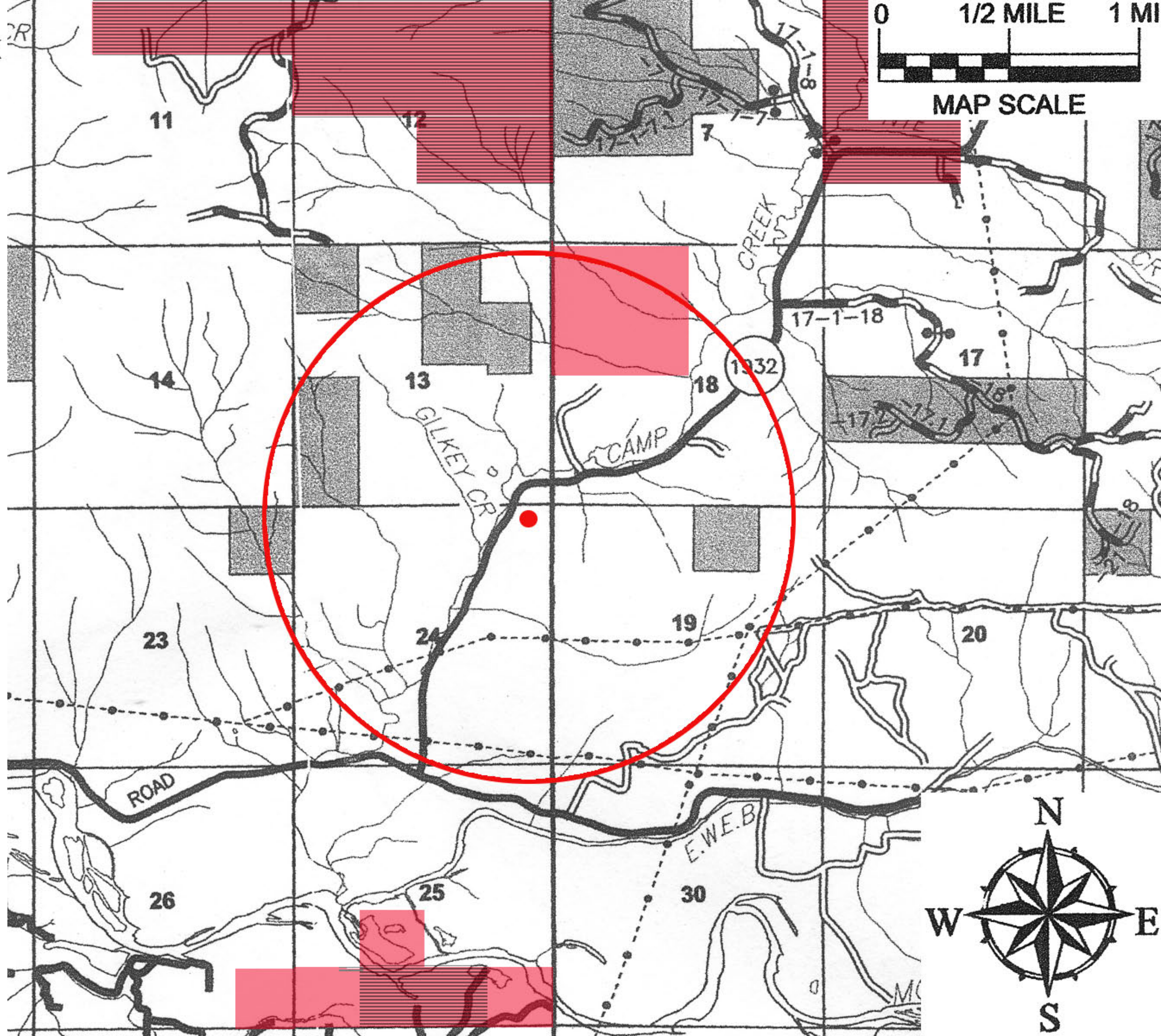
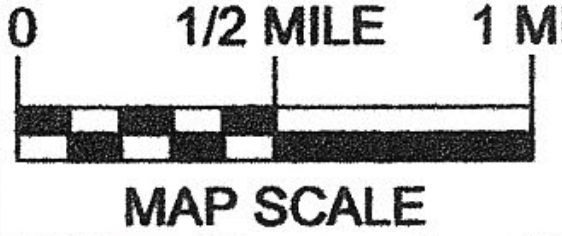


Camp Creek
School

Legend

1992

Aerial
Roadside

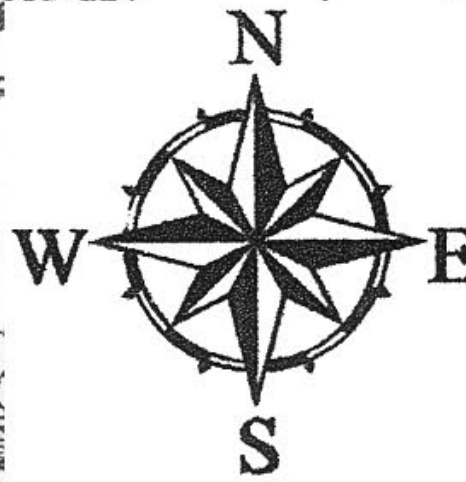
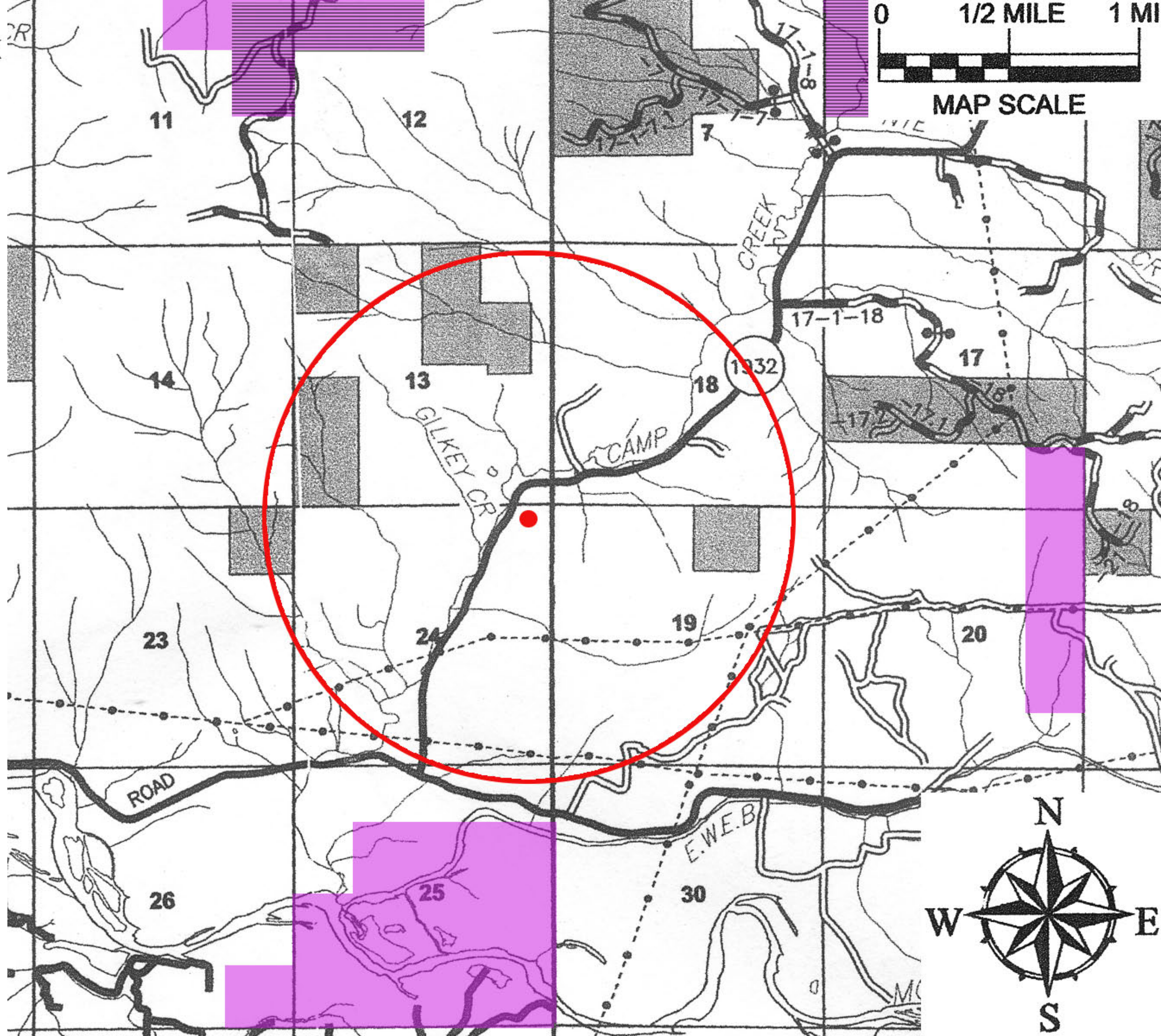
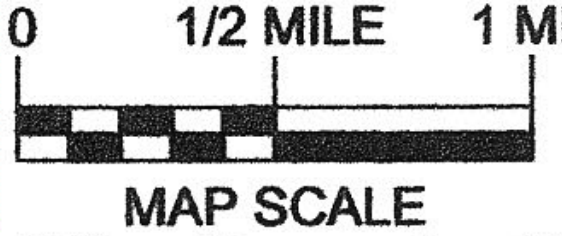


Camp Creek
School

Legend

1993

Aerial
Roadside

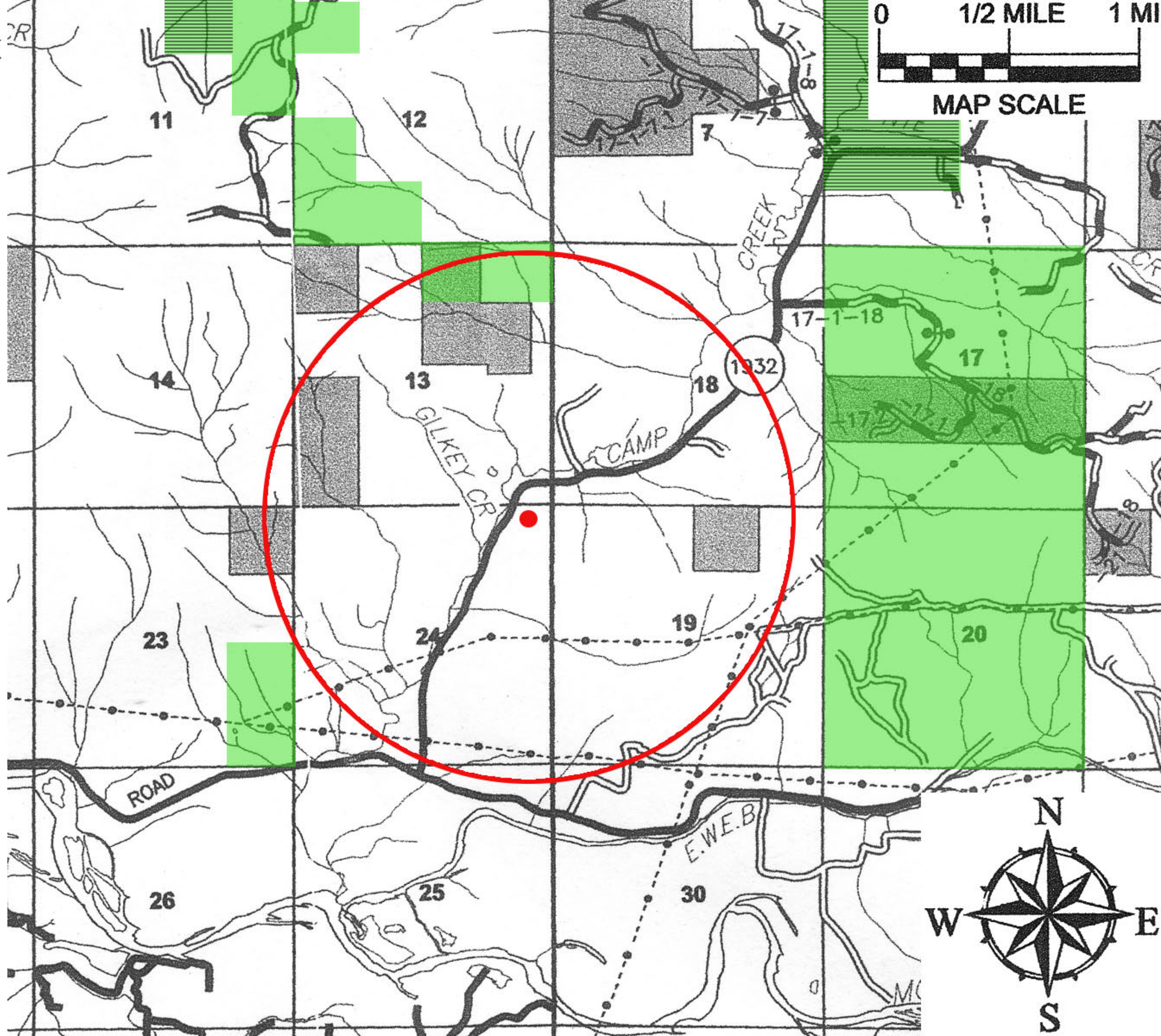
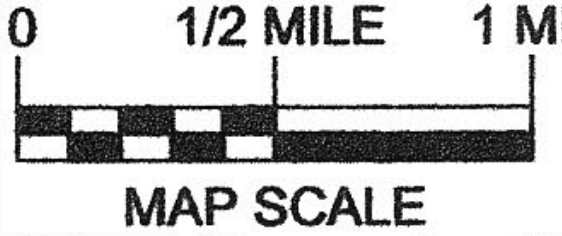


Camp Creek
School

Legend

1994

Aerial
Roadside

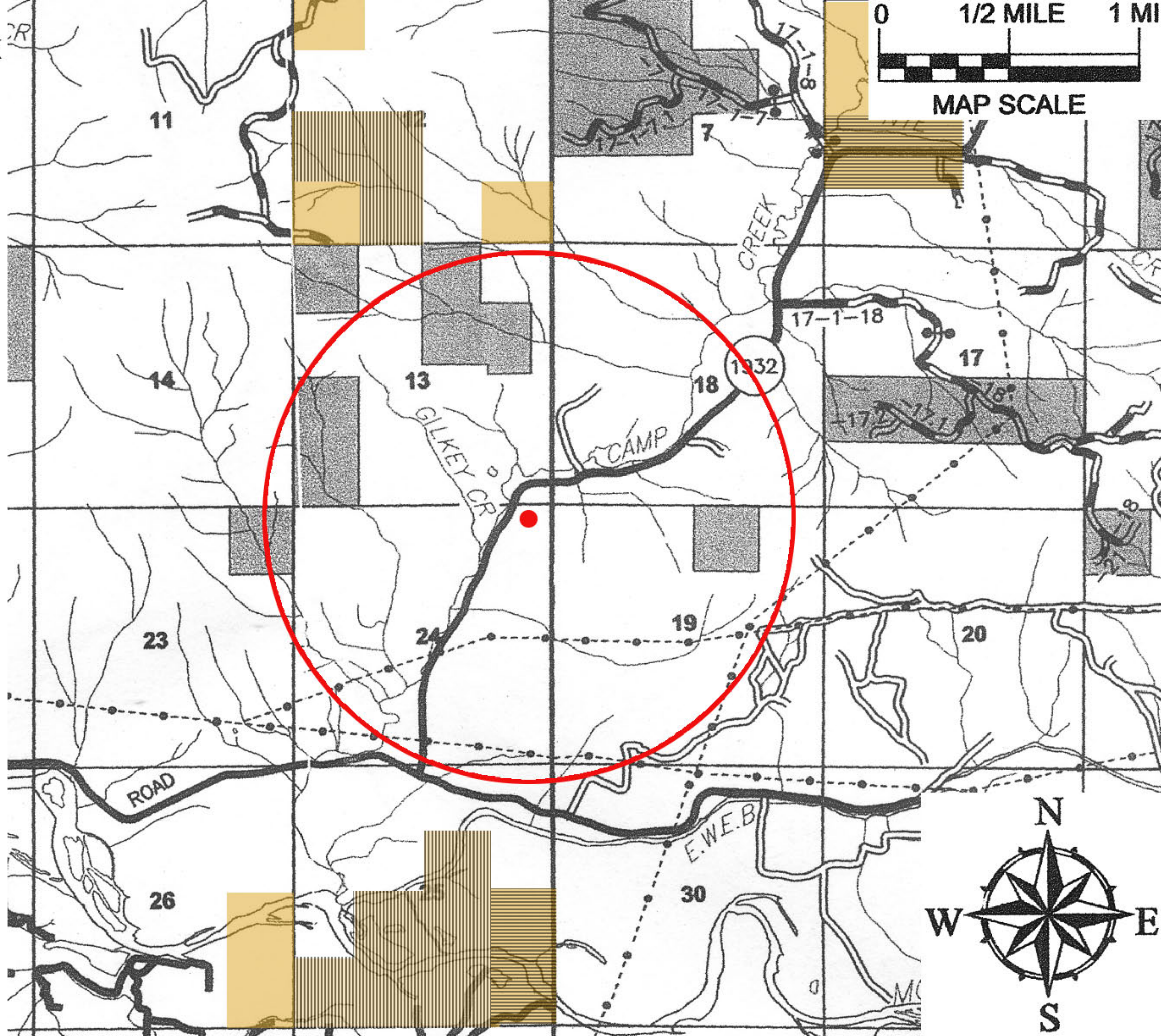
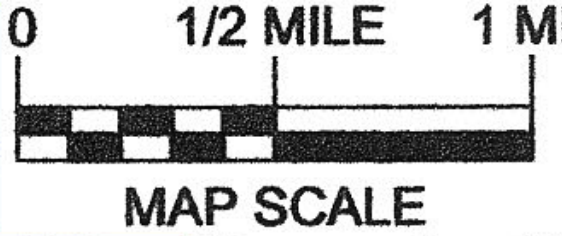


Camp Creek
School

Legend

1995

Aerial
Roadside

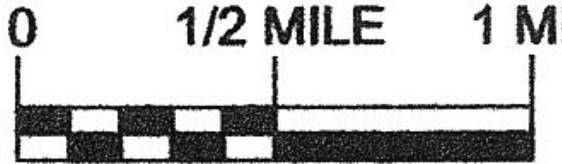


Camp Creek
School

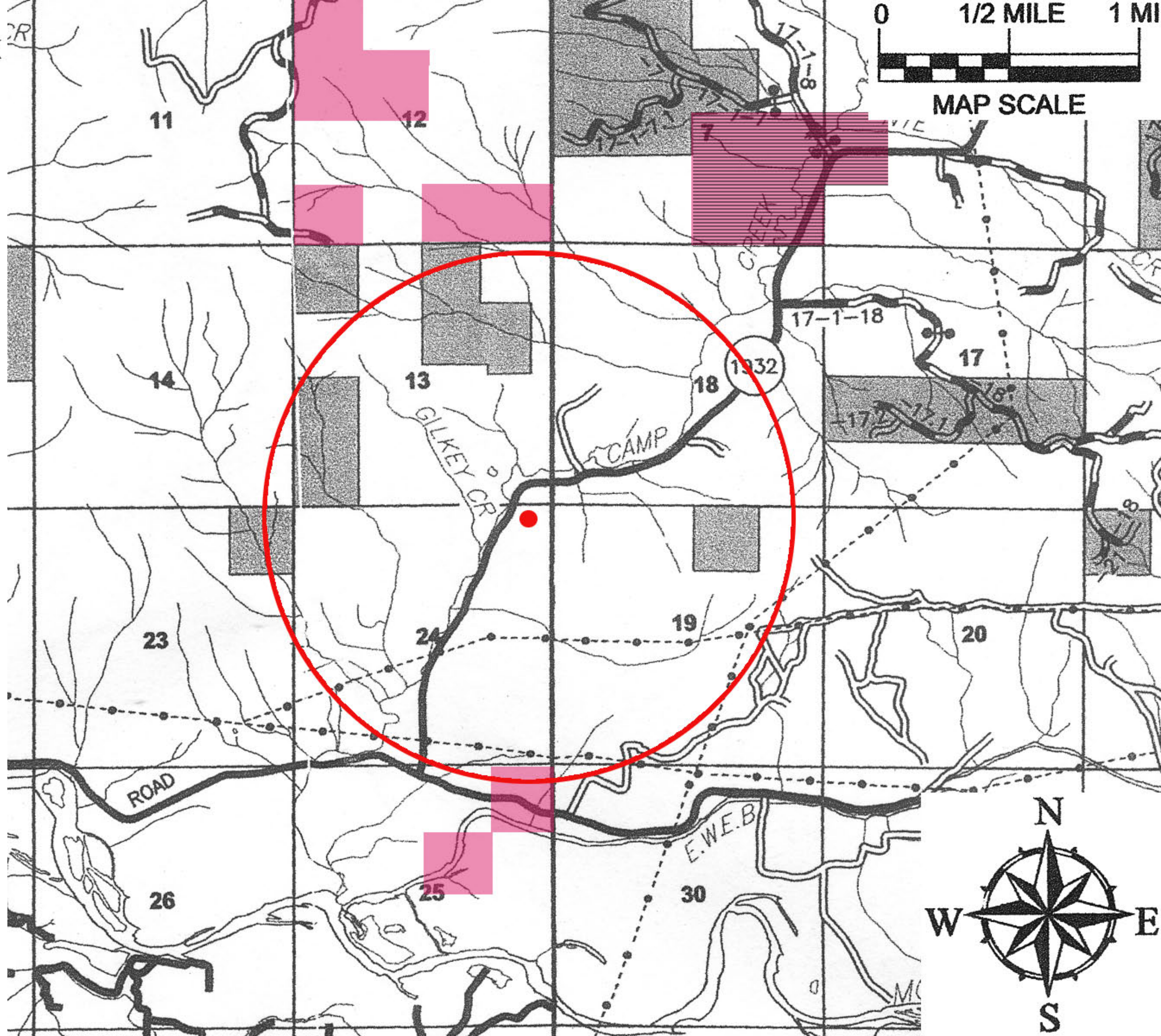
Legend

1996

Aerial 
Roadside 

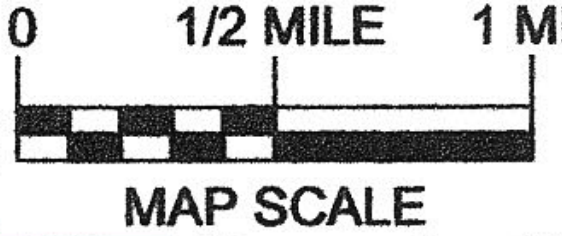


MAP SCALE

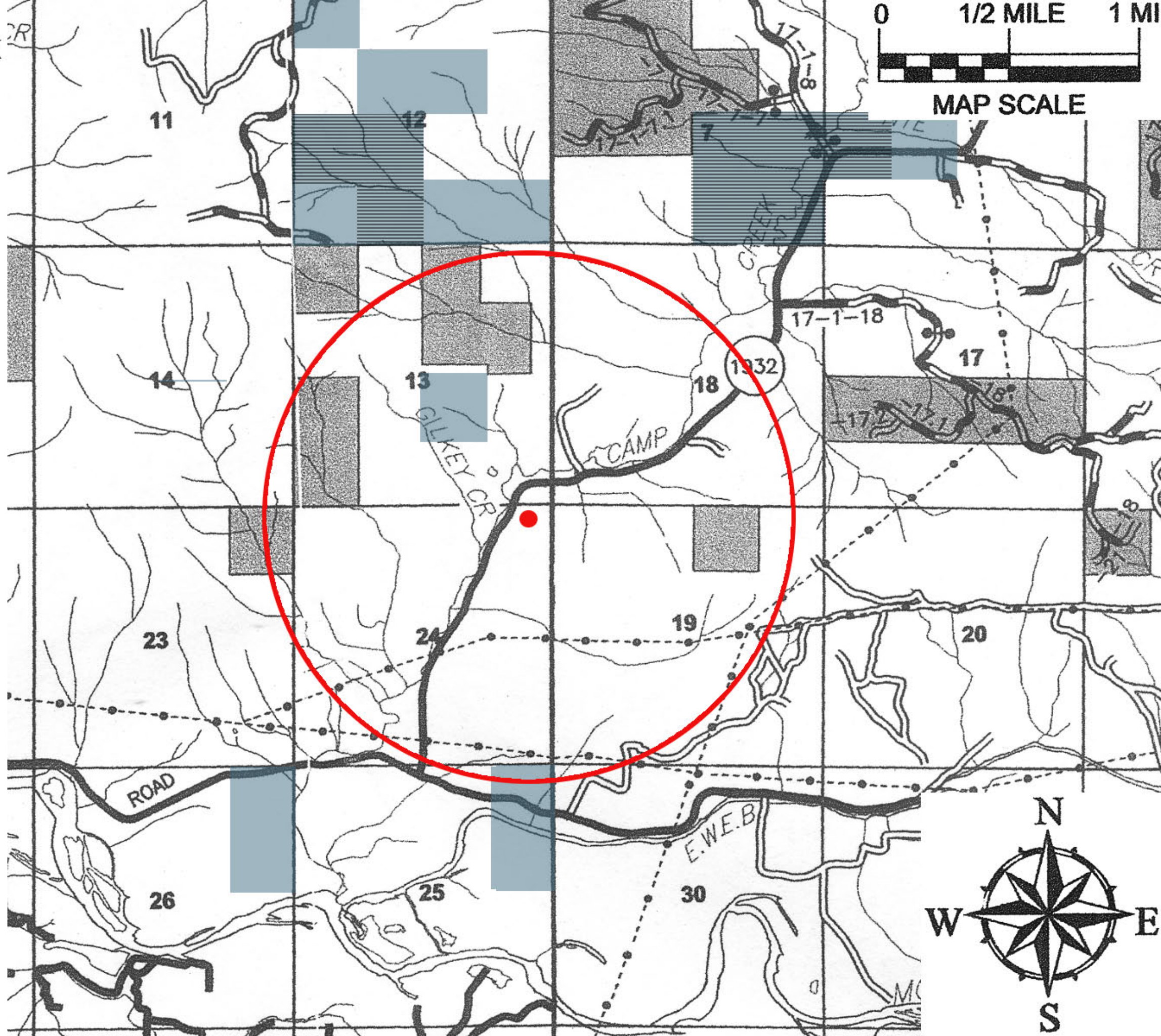


Camp Creek
School

Legend

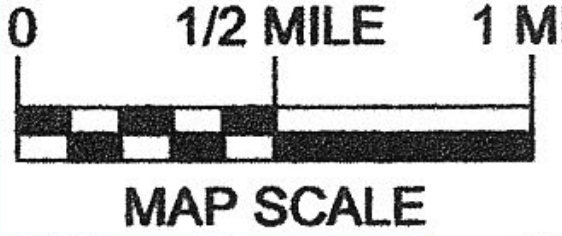


1997

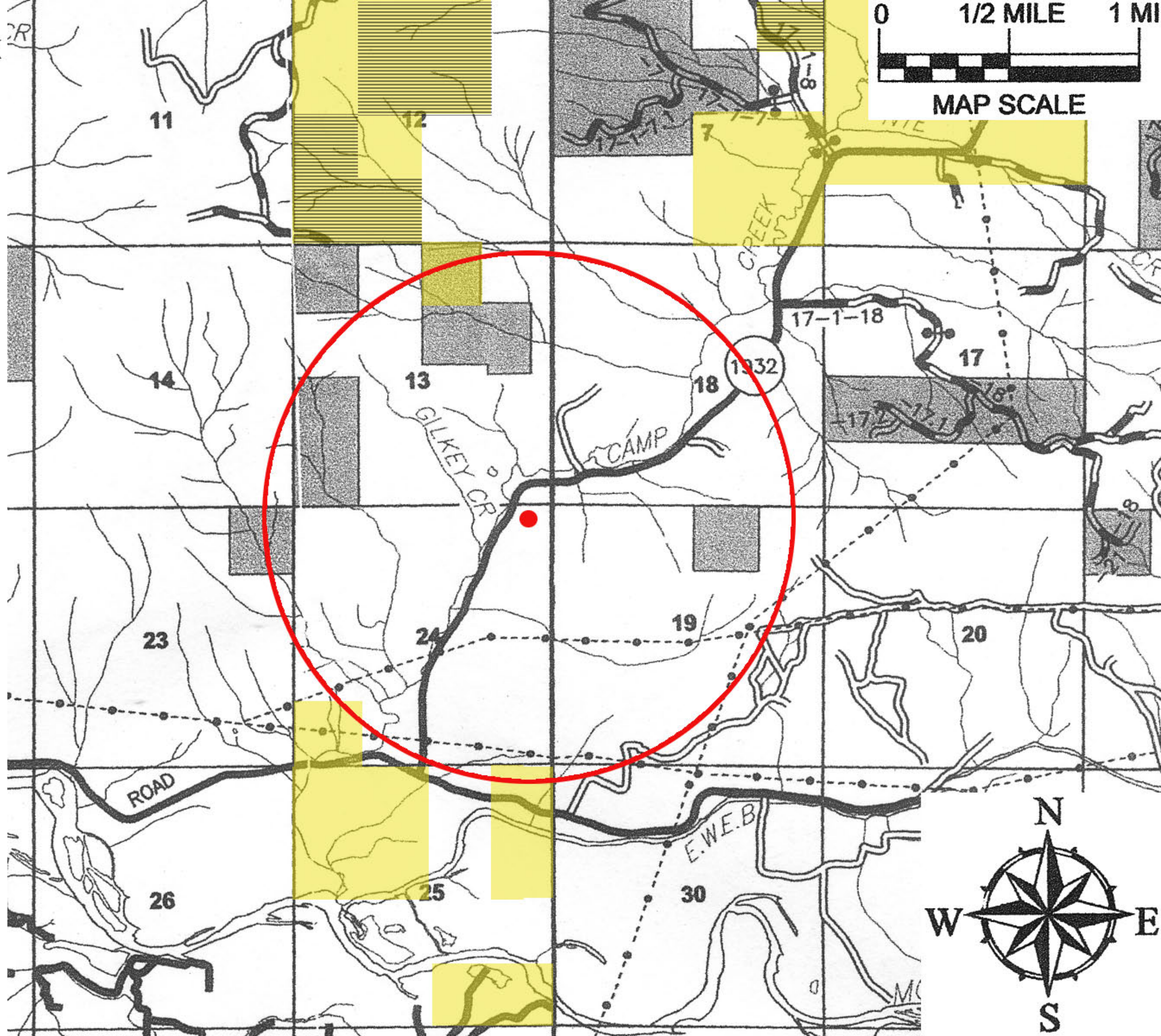


Camp Creek
School

Legend

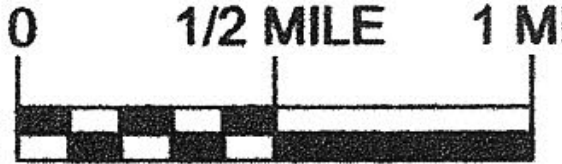


1998



Camp Creek
School

Legend



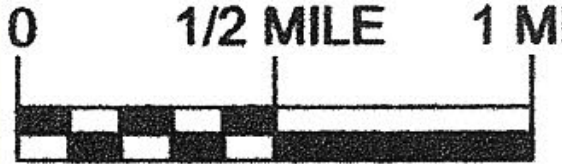
MAP SCALE

1999



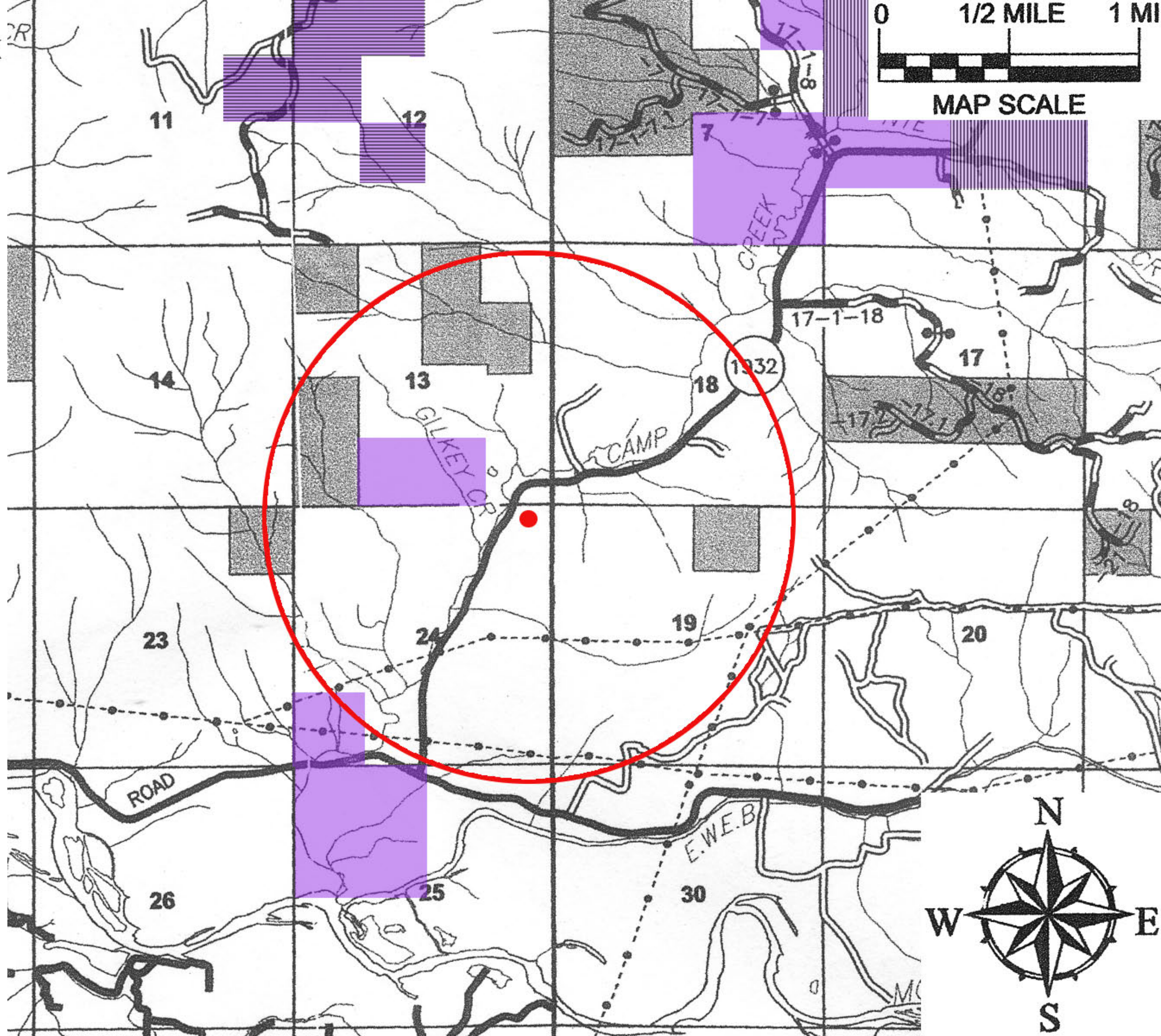
Camp Creek
School

Legend



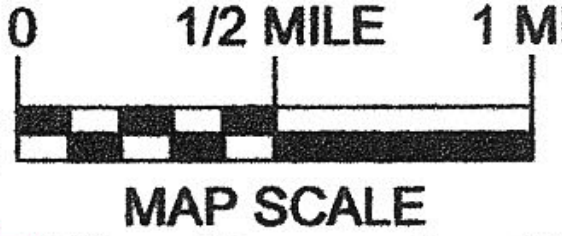
MAP SCALE

2000

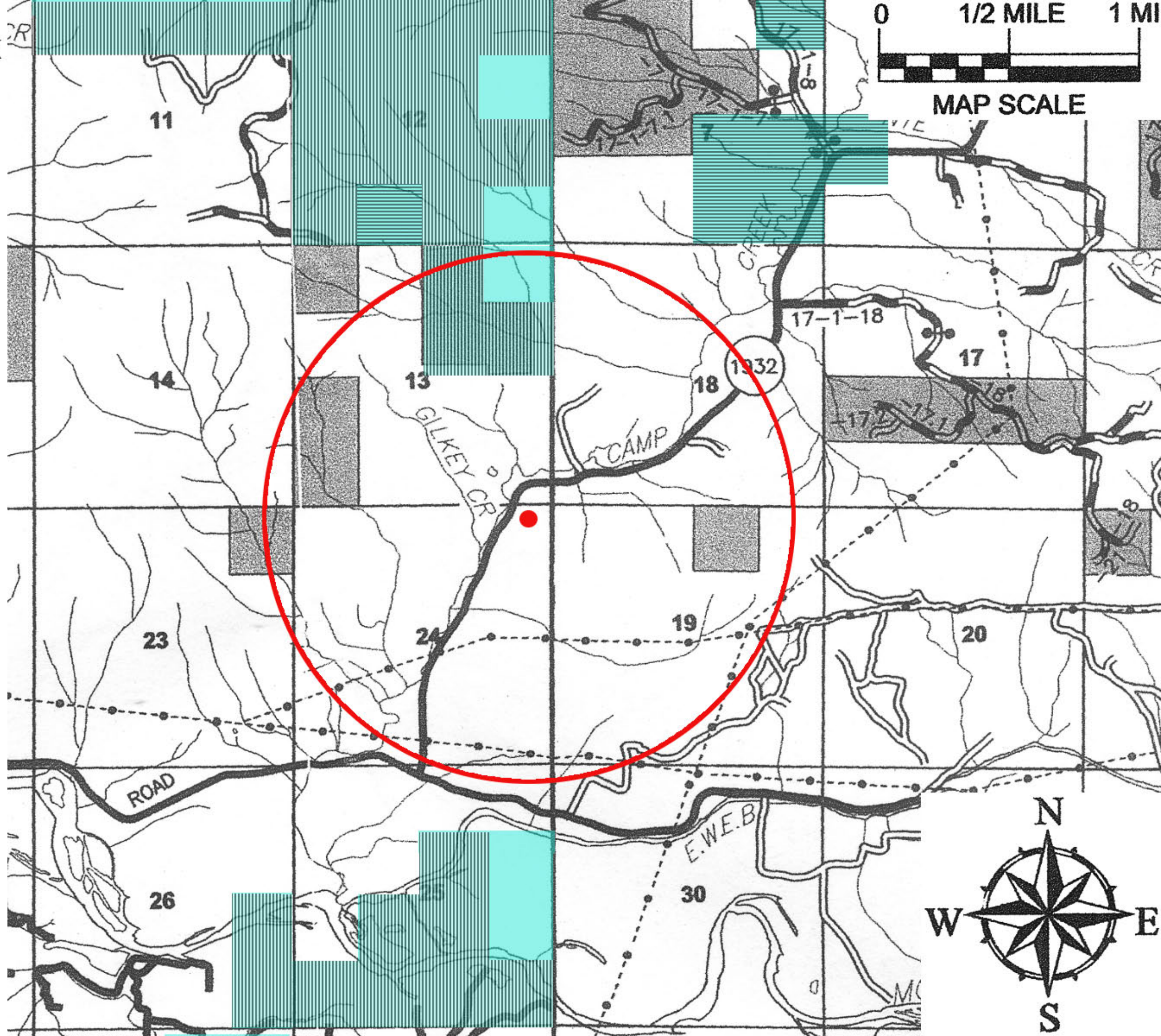


Camp Creek
School

Legend

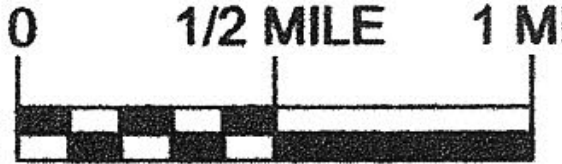


2001



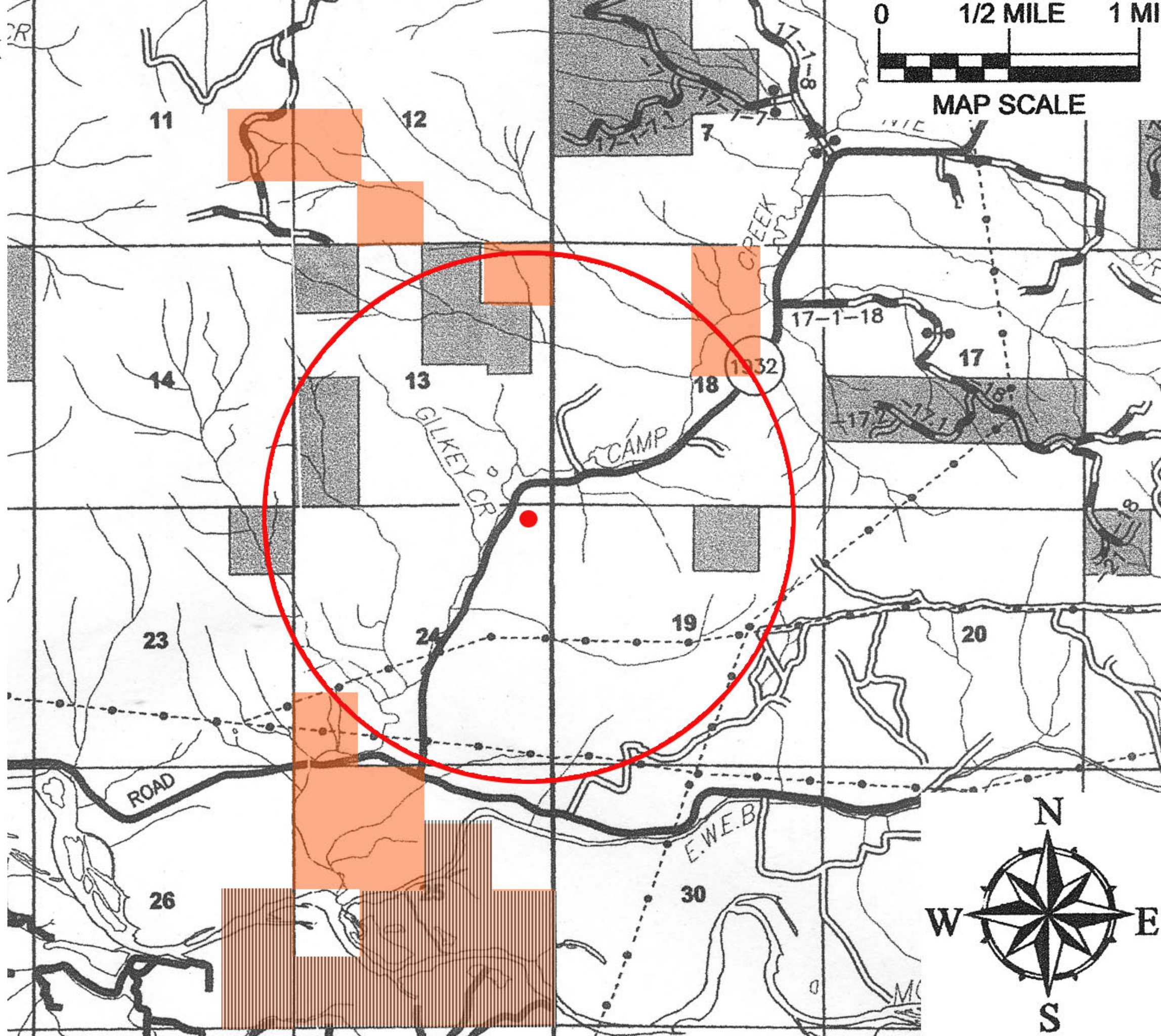
Camp Creek
School

Legend



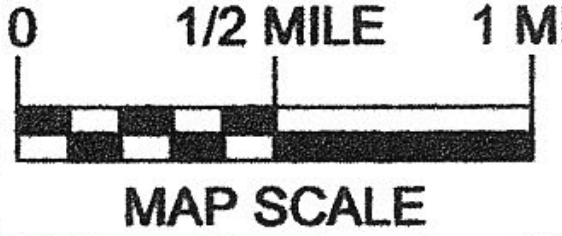
MAP SCALE

2002

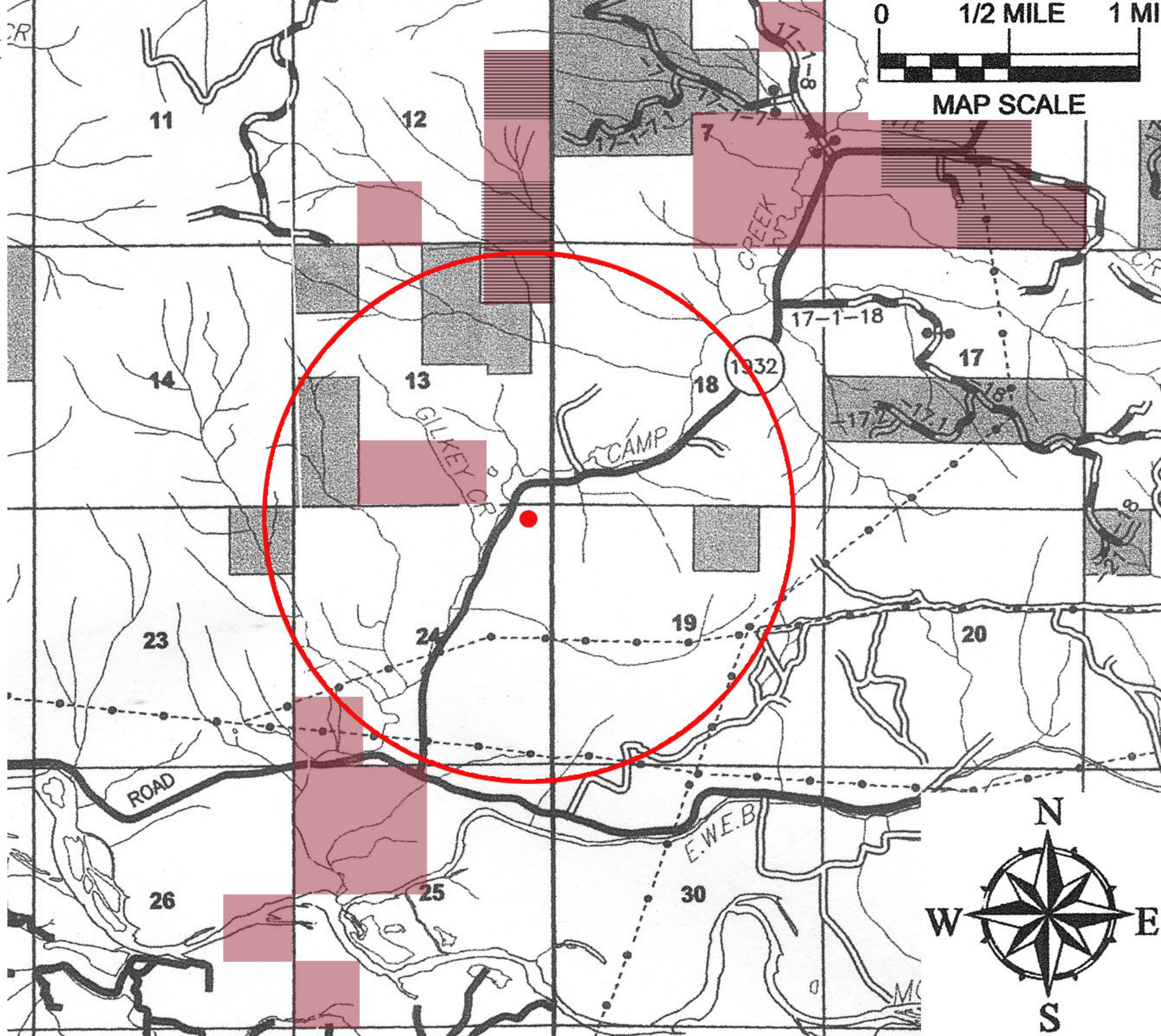


Camp Creek
School

Legend

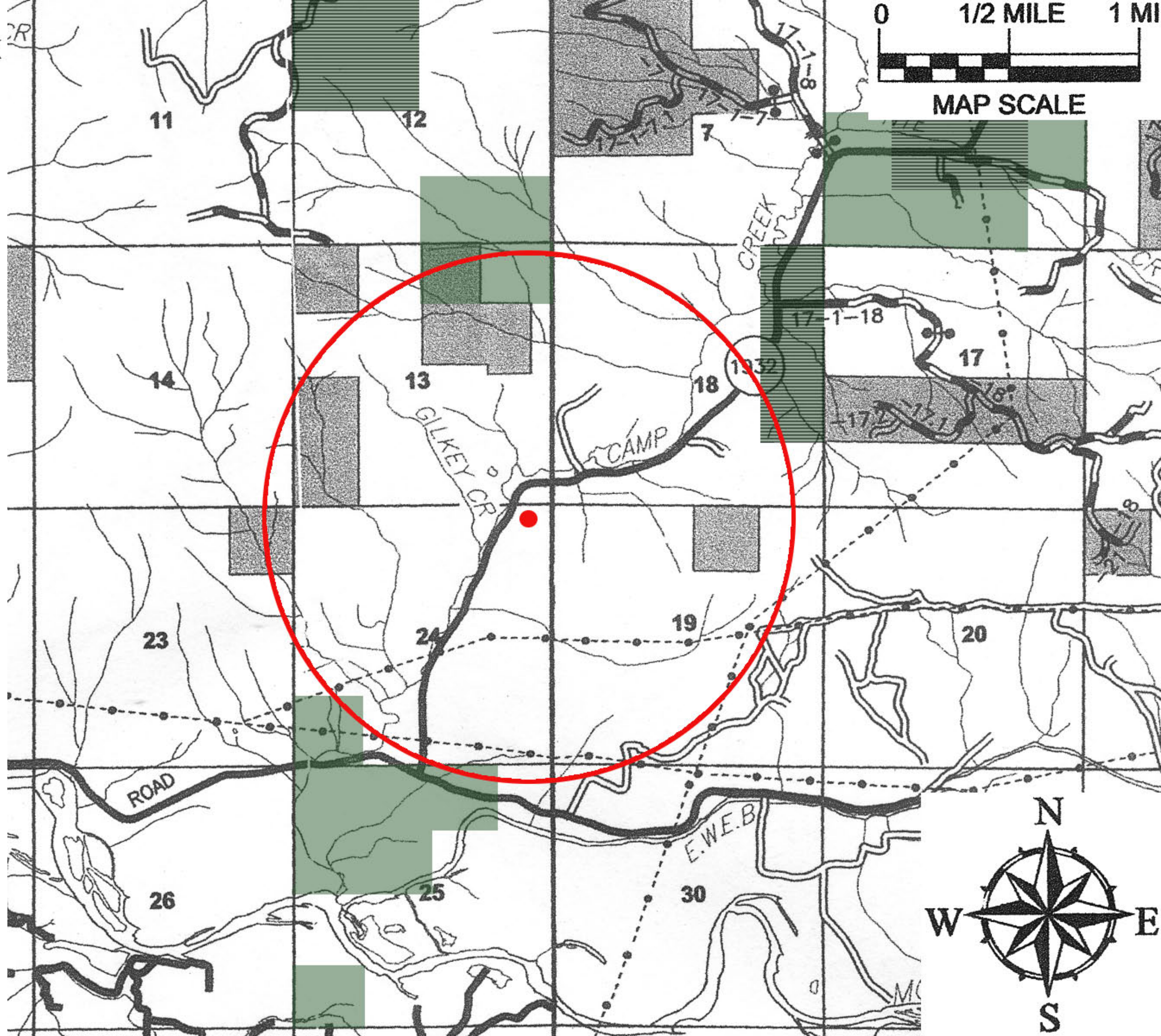
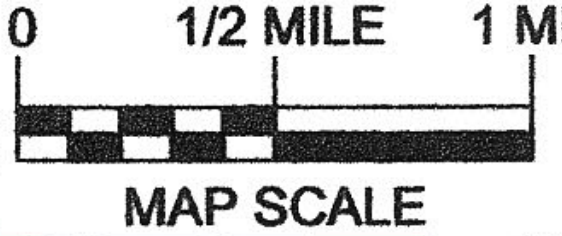


2003



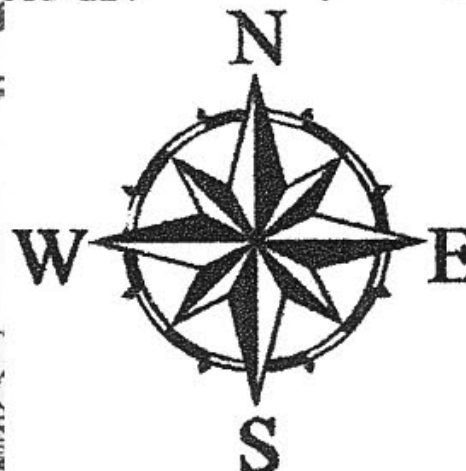
Camp Creek
School

Legend



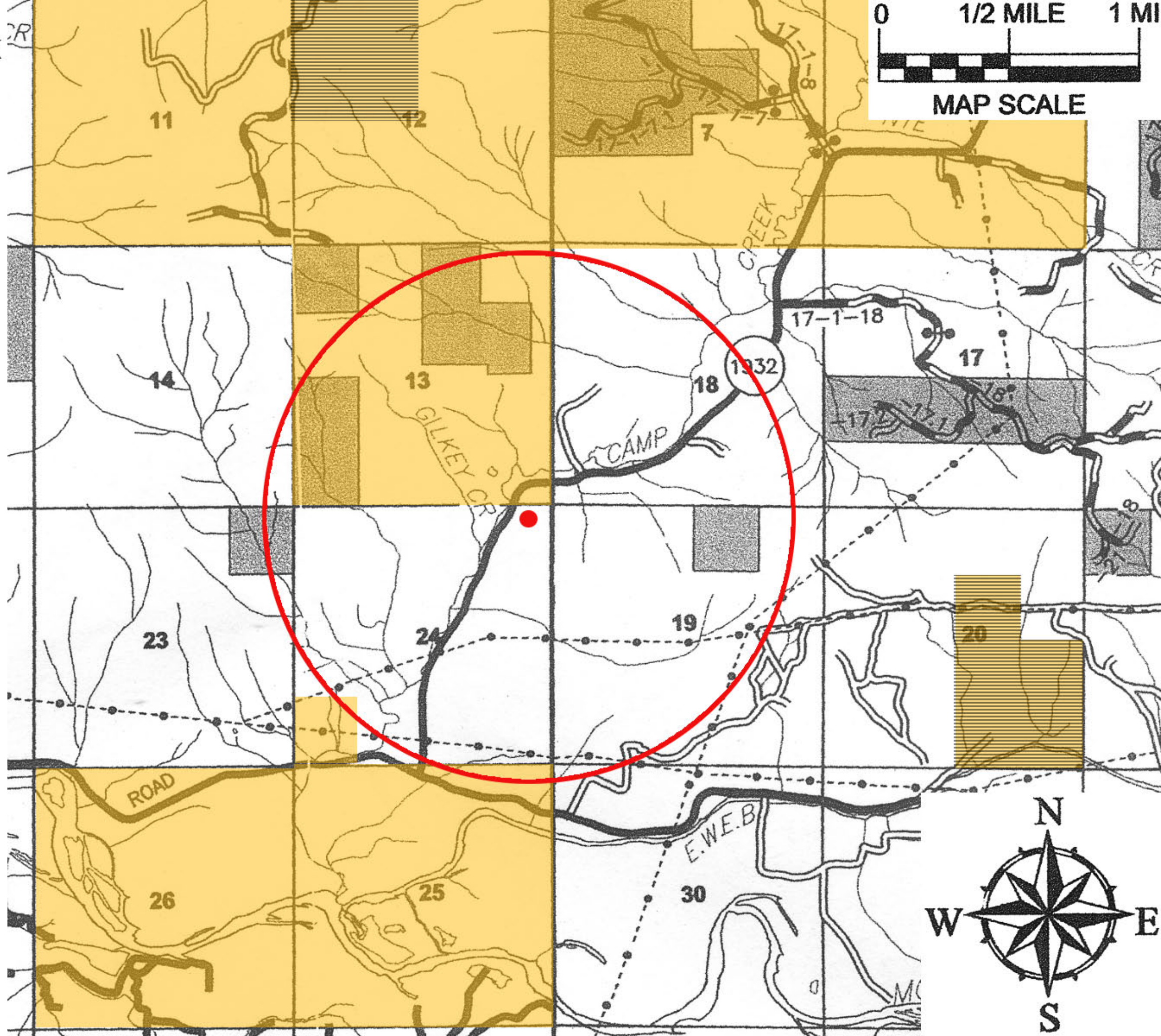
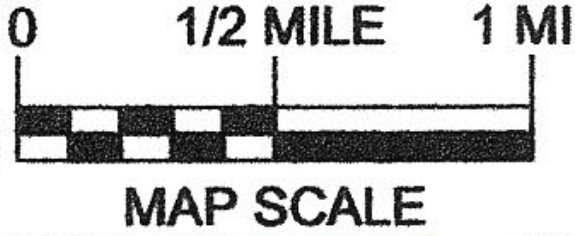
2004

Aerial 
Roadside 



Camp Creek
School

Legend



2005

Aerial 
Roadside 

The map displays the study area in the San Joaquin Hills, centered on the Gilkey Creek Camp. A red circle highlights the study area, which is bounded by a red dot at the camp location. The map is divided into numbered sections (11, 12, 13, 14, 17, 18, 19, 20, 23, 24, 25, 26, 30) and features a grid system. A red dot marks the location of the Gilkey Creek Camp. The map also shows a road, a creek, and a dashed line labeled 'E.W.E.B.'.

The map displays the study area in the San Joaquin Hills. A red circle highlights the study area, centered on the intersection of Gilkey Cr. and Camp Creek, near the 1332 road. A red dot marks the location of the study site. The map includes a scale bar (0 to 1 mile) and a compass rose. The study area is centered on the intersection of Gilkey Cr. and Camp Creek, near the 1332 road. The map shows various land parcels, some shaded in purple and others in grey, and a network of roads and trails.

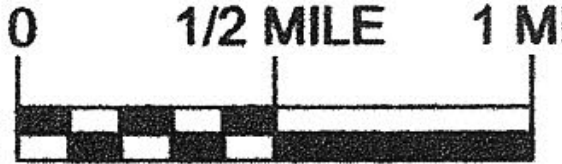
A map of the Gilkey Creek area. A red circle is drawn around a red dot located on Gilkey Cr. The map shows various numbered regions (11, 12, 13, 14, 17, 18, 19, 20, 23, 24, 25, 26, 30) and a road labeled 'ROAD'. A map scale is provided in the top right corner, showing 0, 1/2 mile, and 1 mile. A compass rose is located in the bottom right corner, indicating North (N), South (S), East (E), and West (W). Several areas are shaded in purple, and some areas are shaded in grey. The text 'CAMP' is visible near the red dot, and 'E.W.E.B.' is visible near the bottom right. The text '17-1-18' is visible near the top right. The text '17-1-18' is also visible near the top right. The text '17-1-18' is also visible near the top right.

Map of the study area in the San Joaquin Hills. The map shows the Gilkey Creek Camp, Gilkey Creek, and surrounding areas. A red circle highlights the study area. The map is divided into numbered sections (11, 12, 13, 14, 17, 18, 19, 20, 23, 24, 25, 26, 30) and features a grid system. A red dot marks the location of the Gilkey Creek Camp. The map also shows a road, a creek, and a dashed line labeled 'E.W.E.B.'.

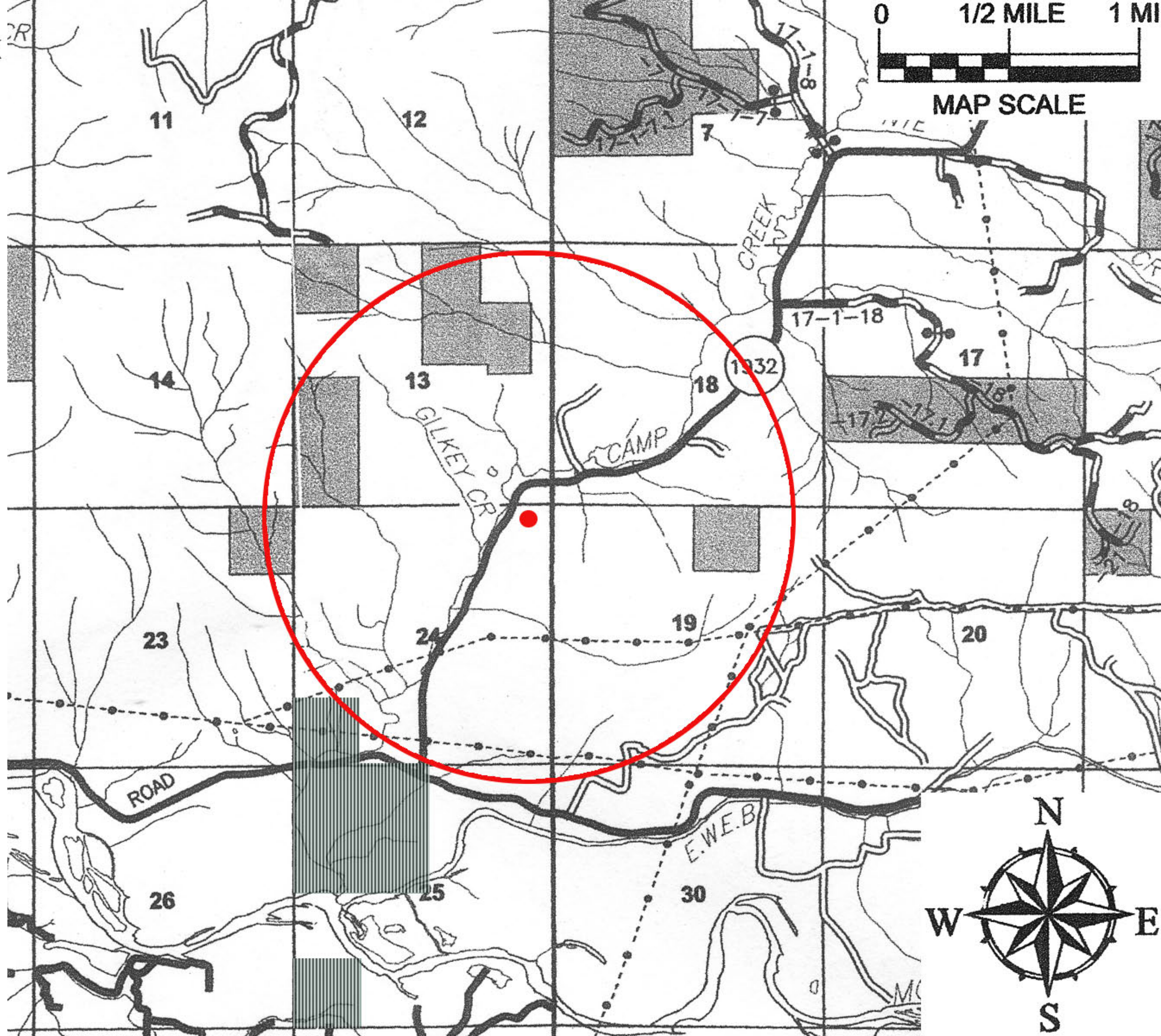
The map displays the study area in the San Joaquin Hills. A red circle highlights the study area, centered on the intersection of Gilkey Cr. and Camp Creek, near the 1332 road. A red dot marks the location of the study site. The map includes a scale bar (0 to 1 mile) and a compass rose. The study area is centered on the intersection of Gilkey Cr. and Camp Creek, near the 1332 road. The map shows various land parcels, some shaded in purple and others in grey, and a network of roads and trails.

Camp Creek
School

Legend

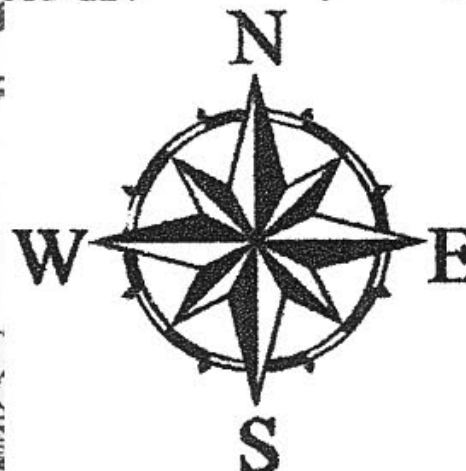


MAP SCALE



2007

Aerial 
Roadside 

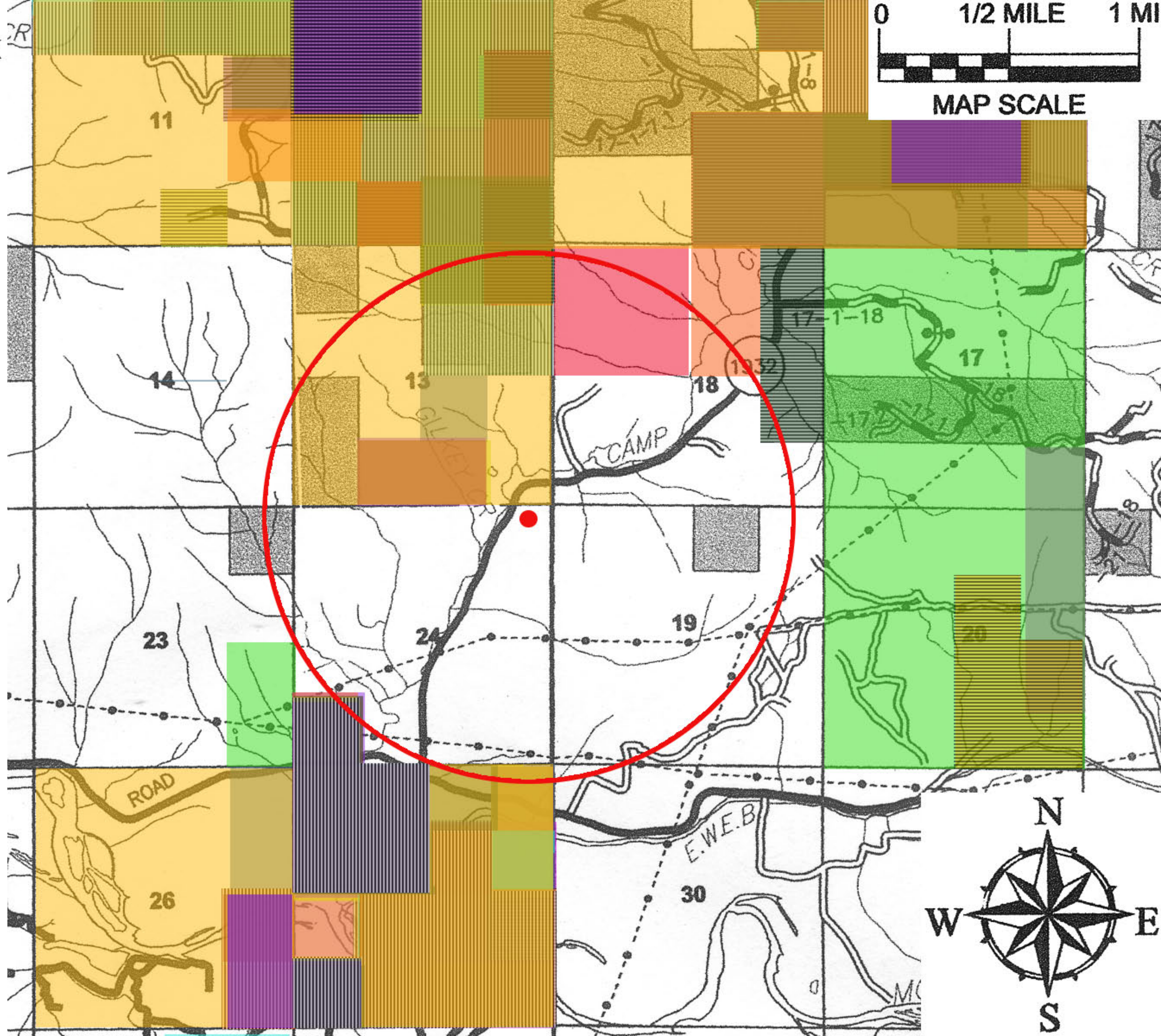
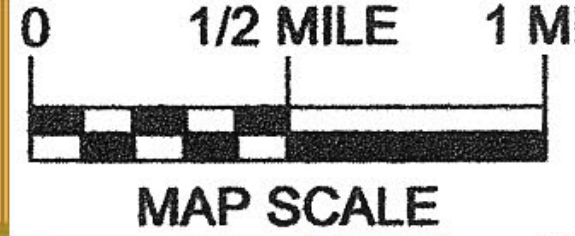


Camp Creek School

Legend

- 1990
- 1991
- 1992
- 1993
- 1994
- 1995
- 1996
- 1997
- 1998
- 1999
- 2000
- 2001
- 2002
- 2003
- 2004
- 2005
- 2006
- 2007

- Aerial
- Roadside



Oregon Toxics Alliance

P.O. Box 1106

Eugene OR 97440

Phone/Fax 465-8860

<http://www.oregontoxics.org/>

Forestland Dwellers

P.O. Box 5954

Eugene, OR 97405

Phone 342-8332

<http://www.forestlanddwellers.org/>