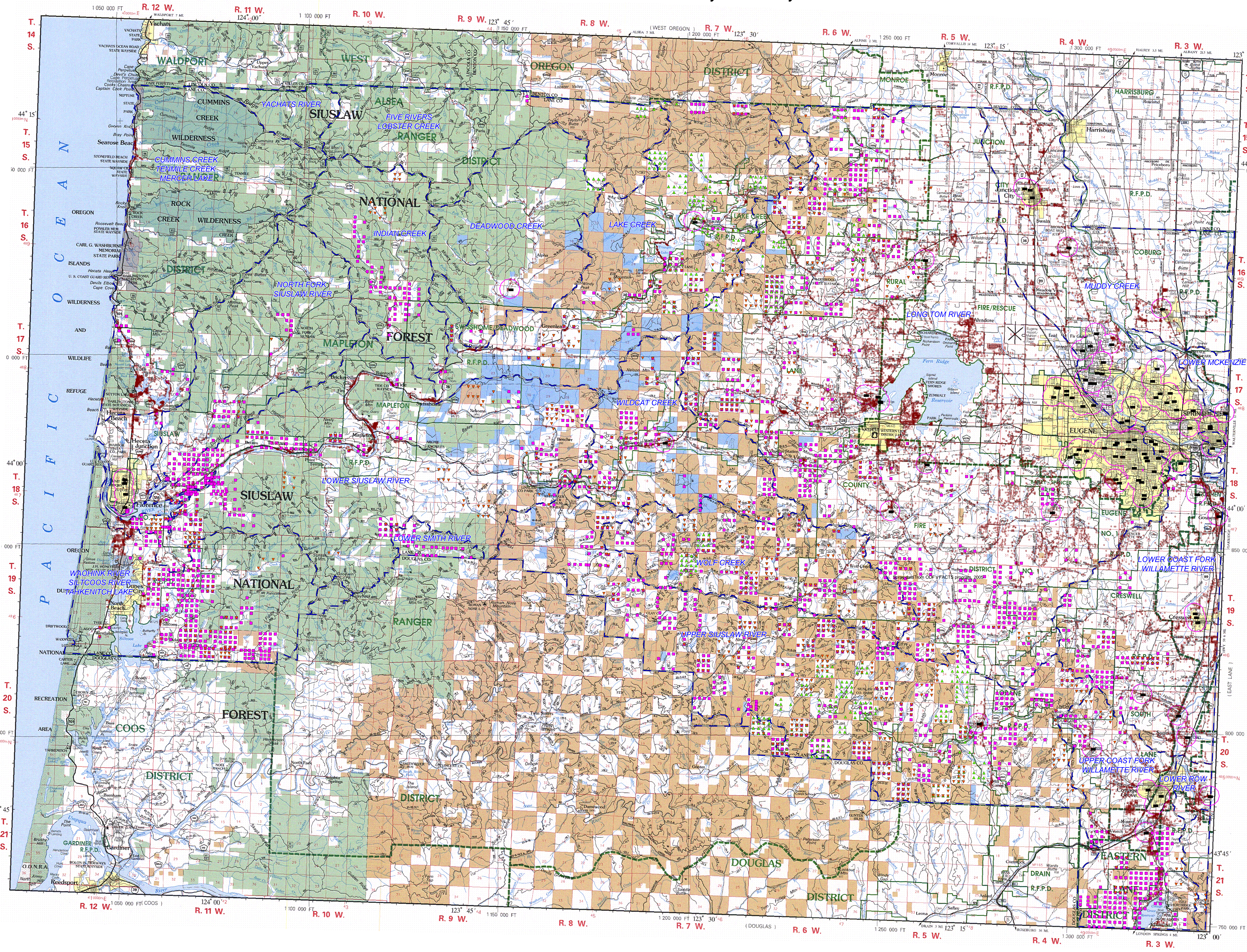



Aerial and Ground Spray Locations of Herbicides and Fertilizers in Western Lane County January - December 2005



**WESTERN LANE
FOREST PROTECTION DISTRICT**
OREGON DEPARTMENT OF FORESTRY

1995



SCALE 1/2" = 1 MILE

ELEVATIONS SHOWN IN METERS
NATIONAL GEODETIC VERTICAL DATUM OF 1929
To Convert meters to feet multiply by 3.2808
To Convert feet to meters multiply by 0.3048

- LEGEND**
- Interstate Route (Exit Numbers)
 - U.S. Route
 - State Route
 - County Route
 - USFS Nat'l Forest Route
 - BLM Route
 - Private Road System
 - Primary Highway (Milepost)
 - Secondary Highway
 - Paved Road
 - All Weather Road
 - Dirt and Primitive Road
 - Trail
 - Railroad (Milepost)
 - Overhead Transmission Line
 - Underground Line or Pipeline
 - Sawmill
 - Horizontal Control Station
 - House Cabin or Other Building
 - Church
 - School
 - Stream Gaging Station
 - Mine or Quarry
 - Improved Recreation Site
 - Landmark or Location
 - Drainage
 - District Headquarters
 - Unit Headquarters
 - USFS Ranger Station
 - Guard Station
 - USFS Lookout Station
 - State Lookout Station
- Report Fire Here*
- Incorporated City
 - State Board of Forestry Lands
 - State Land Board Admin. by ODF
 - State Land Board Lands
 - National Forest Lands
 - BLM Lands
 - Official Protection District Boundary (ODF)
 - Administrative Boundary (ODF)
 - Ranger District Boundary (USFS)
 - Rural Fire Protection District Boundary

Rural Addresses
 Schools
 School buffer zone: 0.5 mile radius
 Aerial herbicide spray
 Aerial fertilizer spray
 Ground herbicide spray
 Fifth field watersheds

Mapped by Jim Reed and Gary Hale, Mar 2006

PUBLISHED BY: OREGON DEPARTMENT OF FORESTRY
 CARTOGRAPHY: J. WESNER, L. ZWART
 PLANIMETRY: BASED ON U.S.G.S. 1:250,000 SCALE
 INTERMEDIATE TOPOGRAPHIC SERIES
 REVISED FROM U.S.F.S. FIREMANS MAPS, AERIAL PHOTOS
 PROJECTION: UNIVERSAL TRANSVERSE MERCATOR

NOTE: ROADS SHOWN DETERMINED BY PROTECTION DISTRICT
 REQUIREMENTS MAY NOT SHOW ALL EXISTING ROADS
 ACCESS THRU PRIVATE LAND MAY BE RESTRICTED
 FOR CURRENT LAND STATUS CONSULT OFFICIAL
 RECORDS AT ODF, USFS, AND BLM OFFICES
 COMPUTER GENERATED