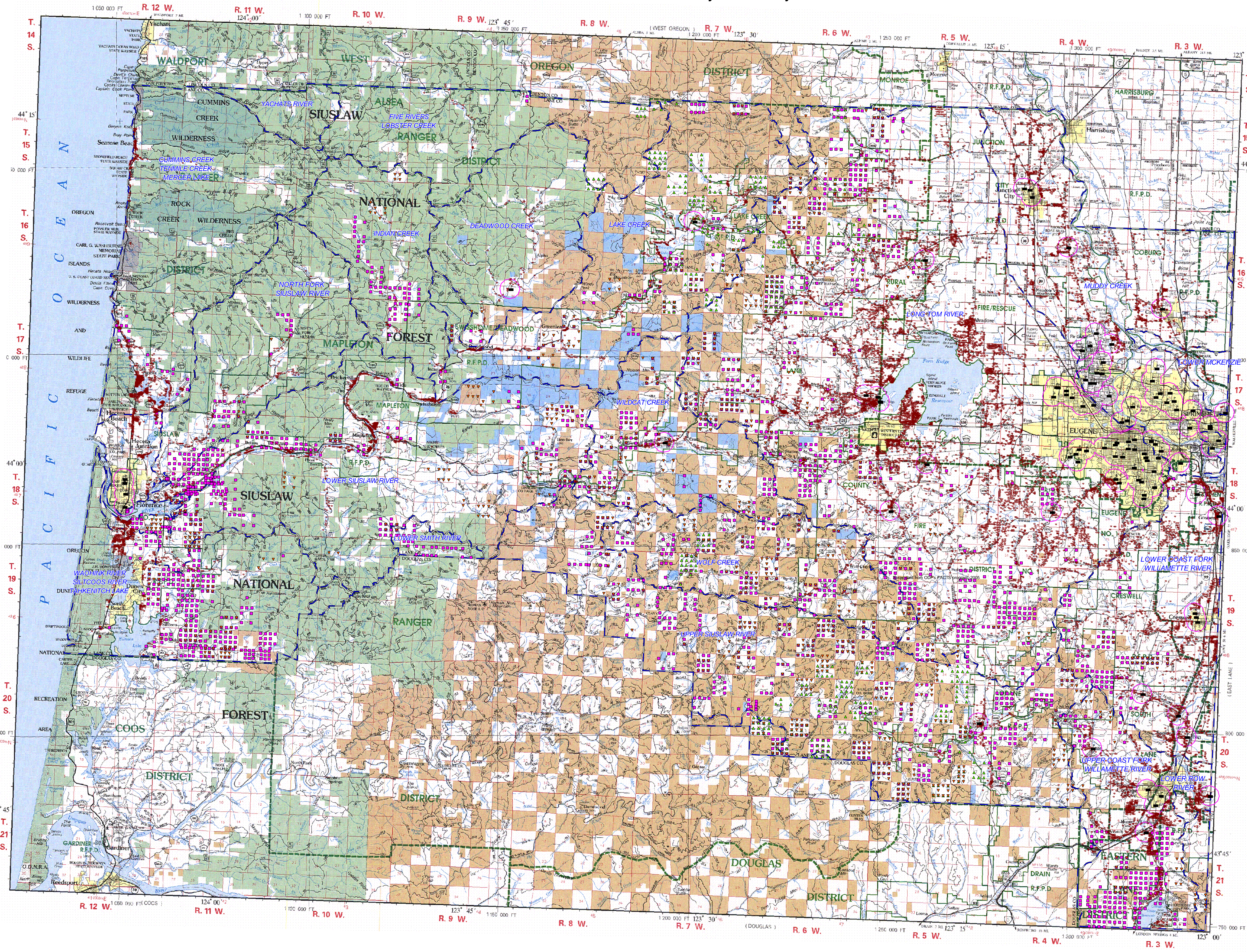


Aerial and Ground Spray Locations of Herbicides and Fertilizers in Western Lane County January - December 2005



**WESTERN LANE
FOREST PROTECTION DISTRICT**
OREGON DEPARTMENT OF FORESTRY



1995
SCALE 1/2" = 1 MILE

ELEVATIONS SHOWN IN METERS
NATIONAL GEODETIC VERTICAL DATUM OF 1929
To Convert meters to feet multiply by 3.2808
To Convert feet to meters multiply by 0.3048

- LEGEND**
- Interstate Route (Exit Numbers)
 - U.S. Route
 - State Route
 - County Route
 - USFS Nat'l Forest Route
 - BLM Route
 - Private Road System
 - Primary Highway (Milepost)
 - Secondary Highway
 - Paved Road
 - All Weather Road
 - Dirt and Primitive Road
 - Trail
 - Railroad (Milepost)
 - Overhead Transmission Lines
 - Underground Line or Pipeline
 - Sawmill
 - Horizontal Control Station
 - House Cabin or Other Building
 - Church
 - School
 - Stream Gaging Station
 - Mine or Quarry
 - Improved Recreation Site
 - Landmark or Location
 - Drainage
 - District Headquarters
 - Unit Headquarters
 - USFS Ranger Station
 - Guard Station
 - USFS Lookout Station
 - State Lookout Station

- Incorporated City
 - State Board of Forestry Lands
 - State Land Board Admin. by ODF
 - State Land Board Lands
 - National Forest Lands
 - BLM Lands
 - Official Protection District Boundary (ODF)
 - Administrative Boundary (ODF)
 - Ranger District Boundary (USFS)
 - Rural Fire Protection District Boundary
- Rural Addresses
 - Schools
 - School buffer zone: 0.5 mile radius
 - Aerial herbicide spray
 - Aerial fertilizer spray
 - Ground herbicide spray
 - Fifth field watersheds

Mapped by Jim Reed and Gary Hale, Mar 2006

PUBLISHED BY OREGON DEPARTMENT OF FORESTRY
CARTOGRAPHY: J. WISNER, F. ZWART
PLANTOMETRY: BASED ON USGS 30-MIN SCALE
INTERMEDIATE HYPOGEOGRAPHIC SCHEMES
REVISED FROM USFS FIREMAPS MAPS, AERIAL PHOTOS
PROJECTION: UNIVERSAL TRANSVERSE MERCATOR

NOTE: RIGHTS RESERVED BY PROTECTION DISTRICT
REGULATIONS MAY RESTRICT ALL RIGHTS RESERVED
ACCESS TO PRIVATE LANDS MAY BE RESTRICTED
FOR COMMERCE. LAND RIGHTS CONSULT OFFICIAL
RECORDS AT USFS, BUREAU OF LAND MANAGEMENT
COUNTY SHERIFFS