

***Lane County Schools and Forestry Spray
Mapping Project
1990 – 2006***

Triangle Lake School
Blachly School District ~ Blachly, Oregon

by Oregon Toxics Alliance and Forestland Dwellers

*Mapped using data from Oregon Department of Forestry
Forest Activity Computerized Tracking System (FACTS)*





20264
Blachly Grange Road

TL
Welcome
to
Triangle Lake
Schools

LAKER COUNTRY

Class Motto

Over the years we've seen
losses and gains,
but through it all we've
held together.

Dedicated by
Class of 2004







POST RD

STOP



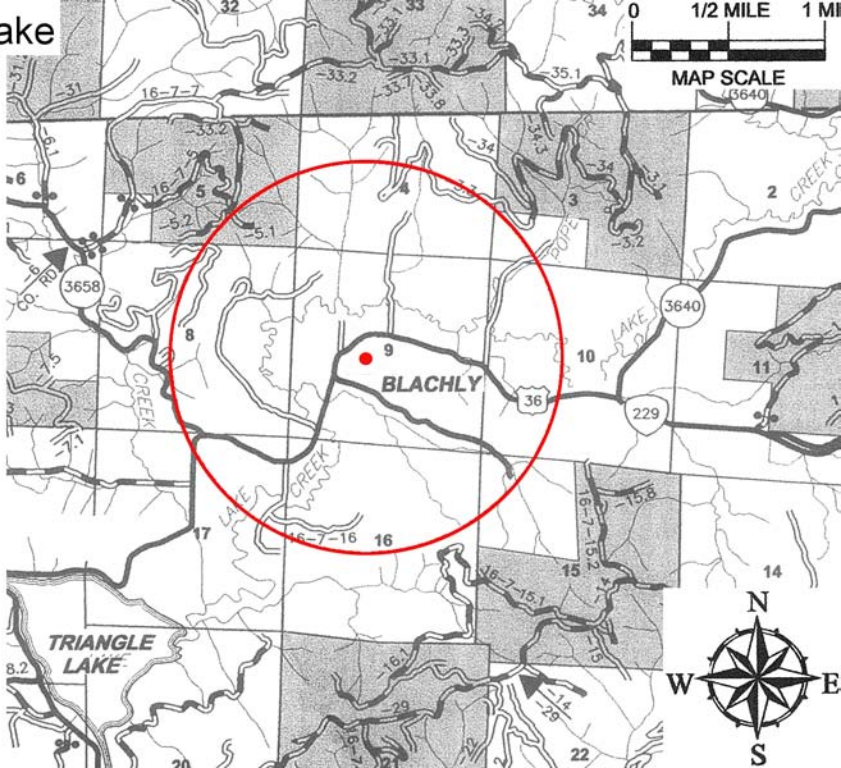
Map Notes

Red Dot is School Location

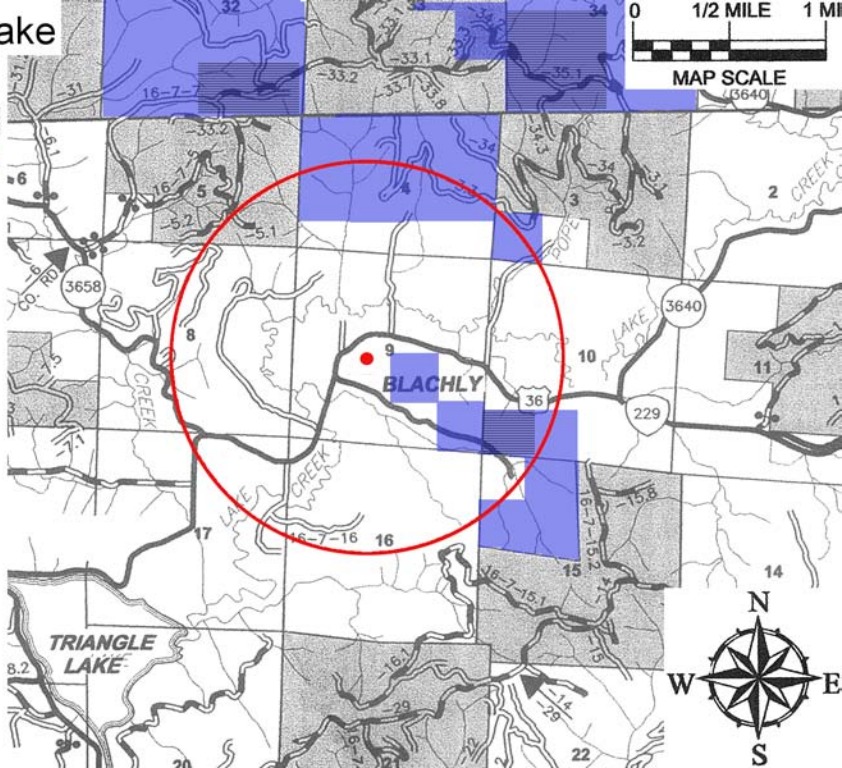
Red Circle is proposed
1 mile radius buffer

Colored Areas are Sprayed

Triangle Lake School

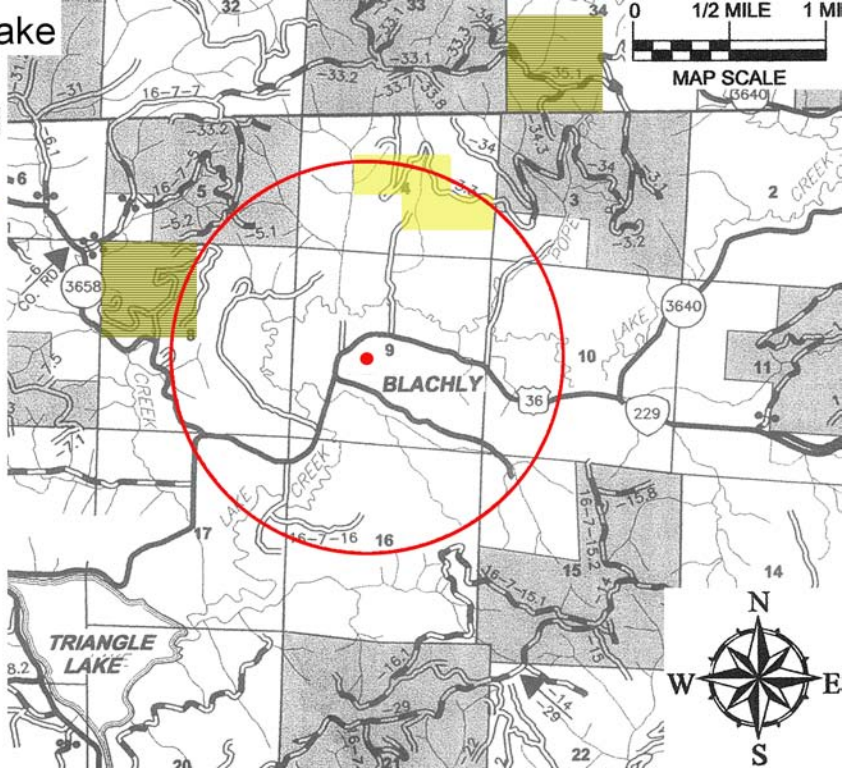


Triangle Lake
School
Legend
1990



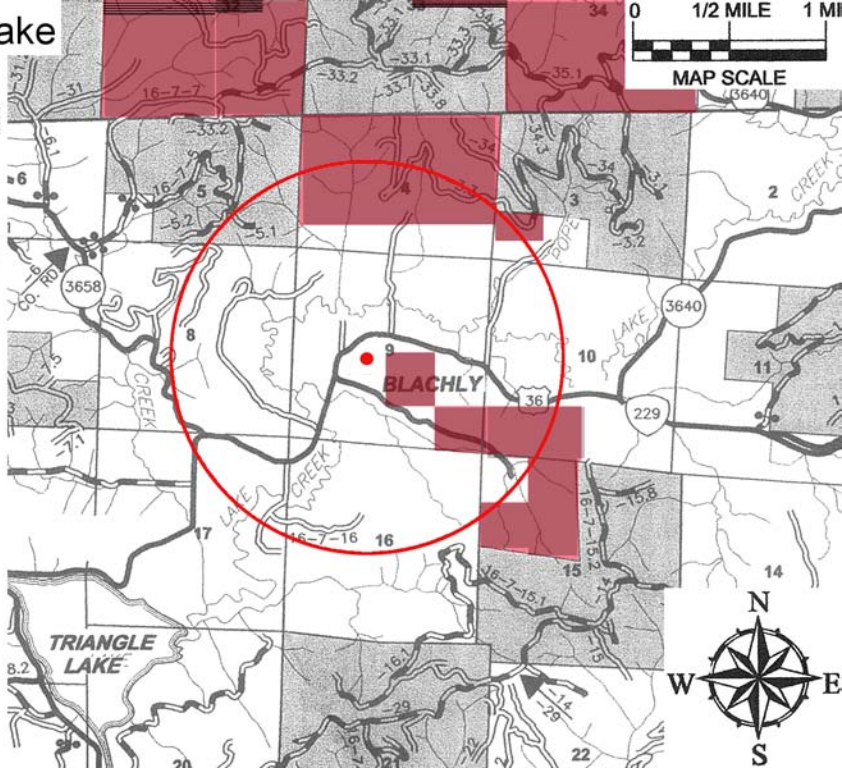
Triangle Lake School Legend

1991



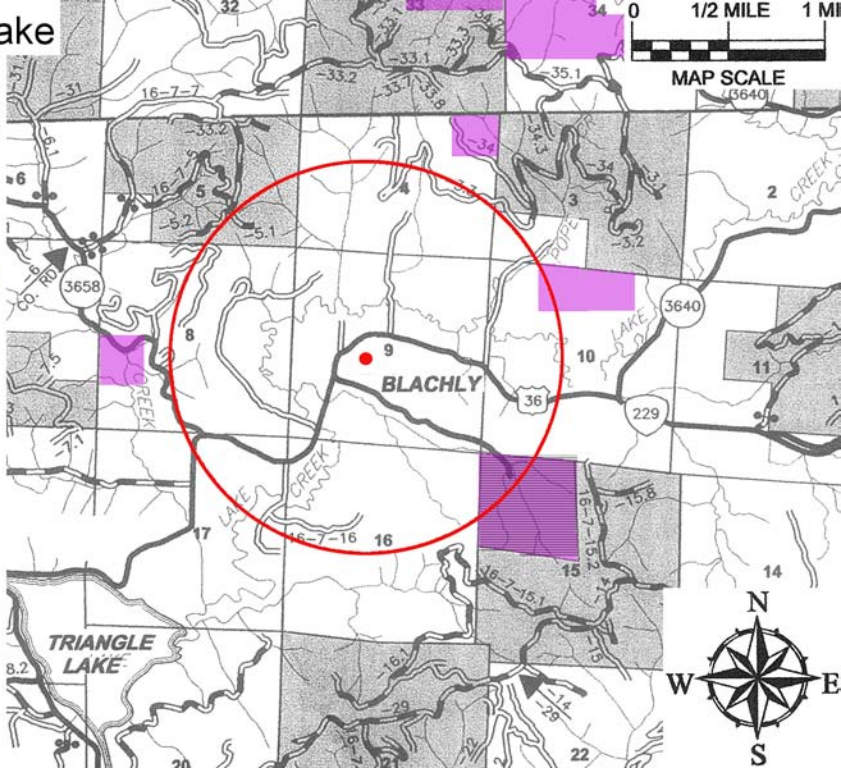
Triangle Lake
School
Legend

1992

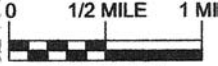


Triangle Lake
School
Legend

1993

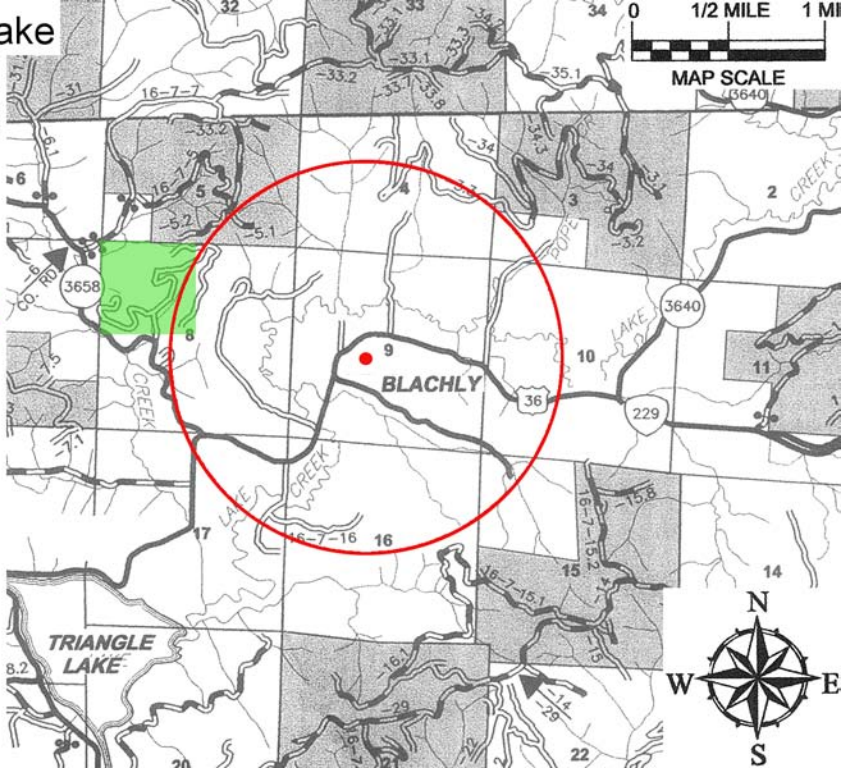


Triangle Lake
School
Legend



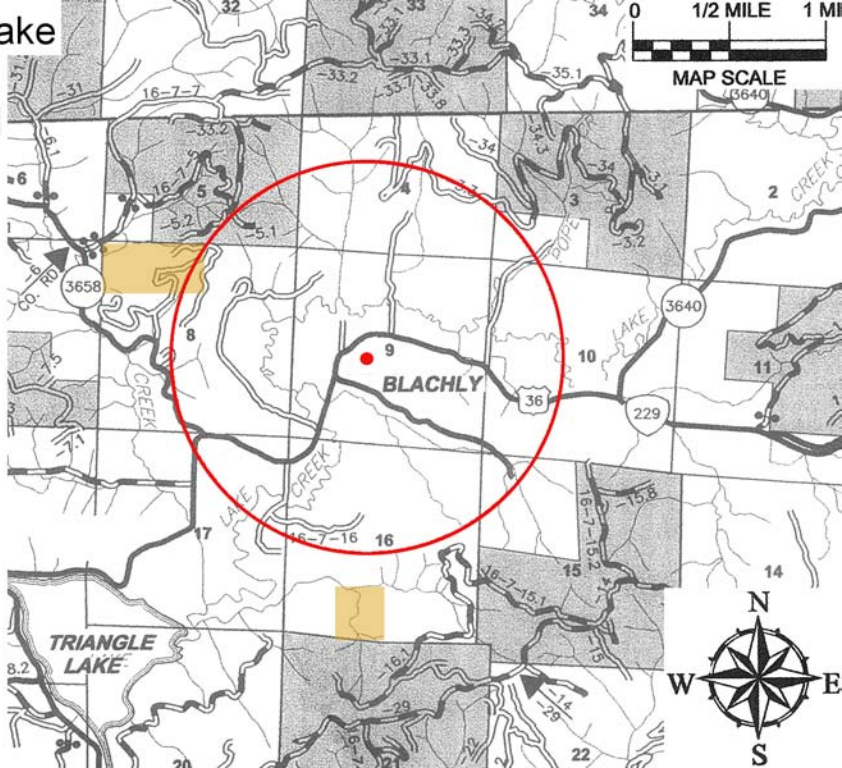
MAP SCALE
(3640)

1994



Triangle Lake
School
Legend

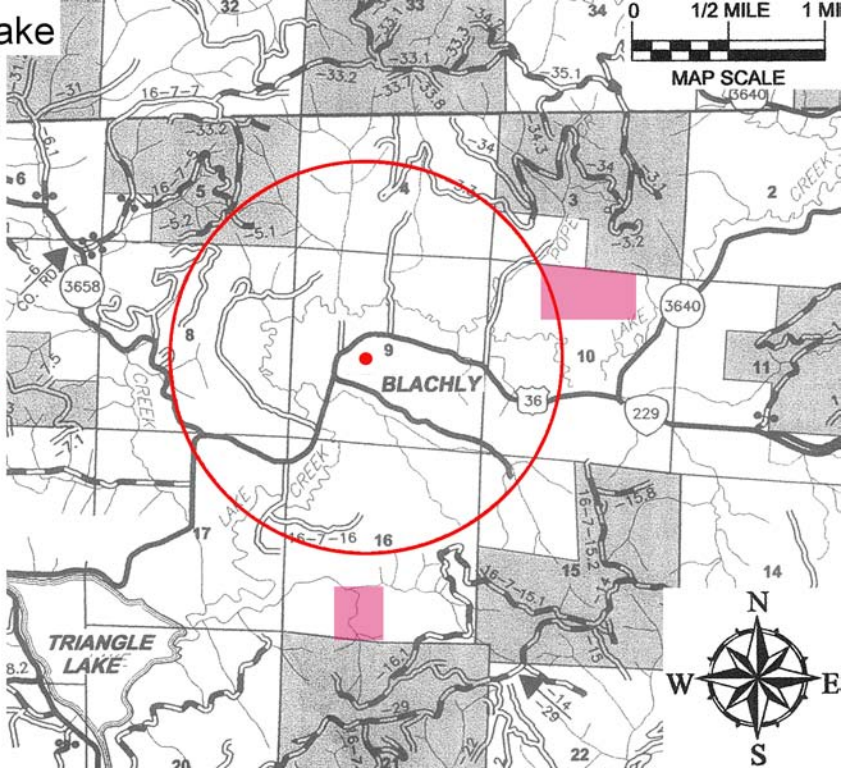
1995



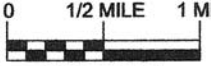
Triangle Lake School Legend



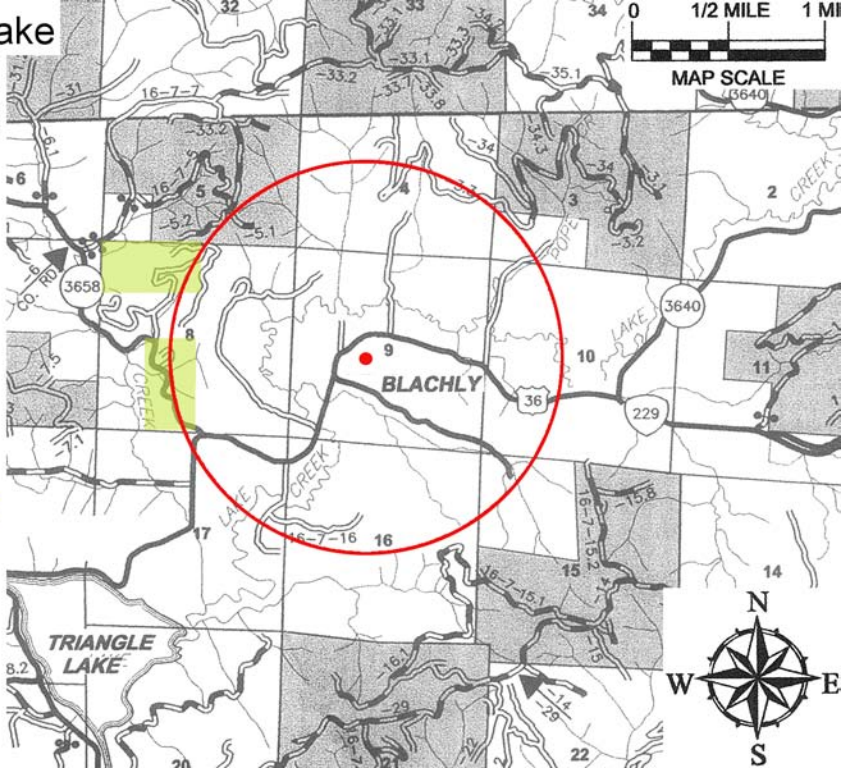
1996



Triangle Lake School Legend

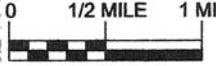


MAP SCALE
(3640)



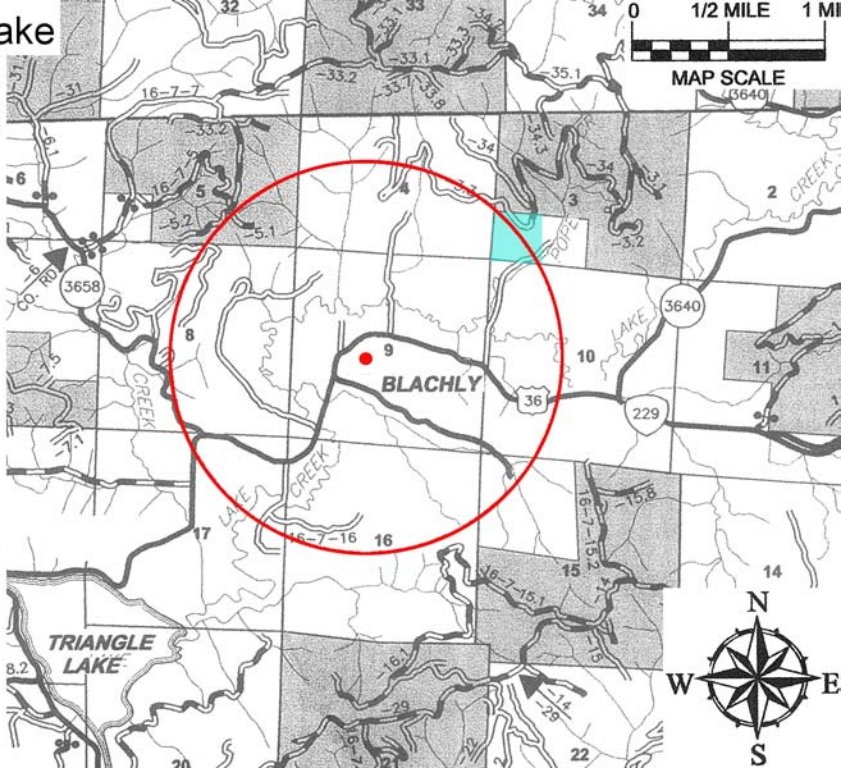
1999

Triangle Lake School Legend

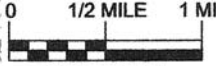


MAP SCALE
(3640)

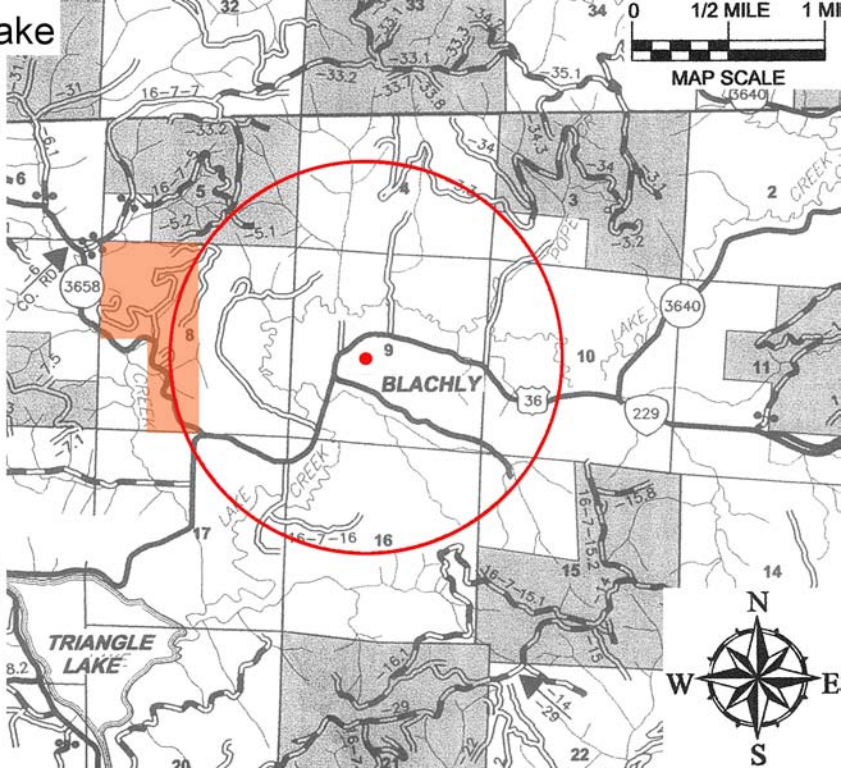
2001



Triangle Lake
School
Legend



MAP SCALE
(3640)

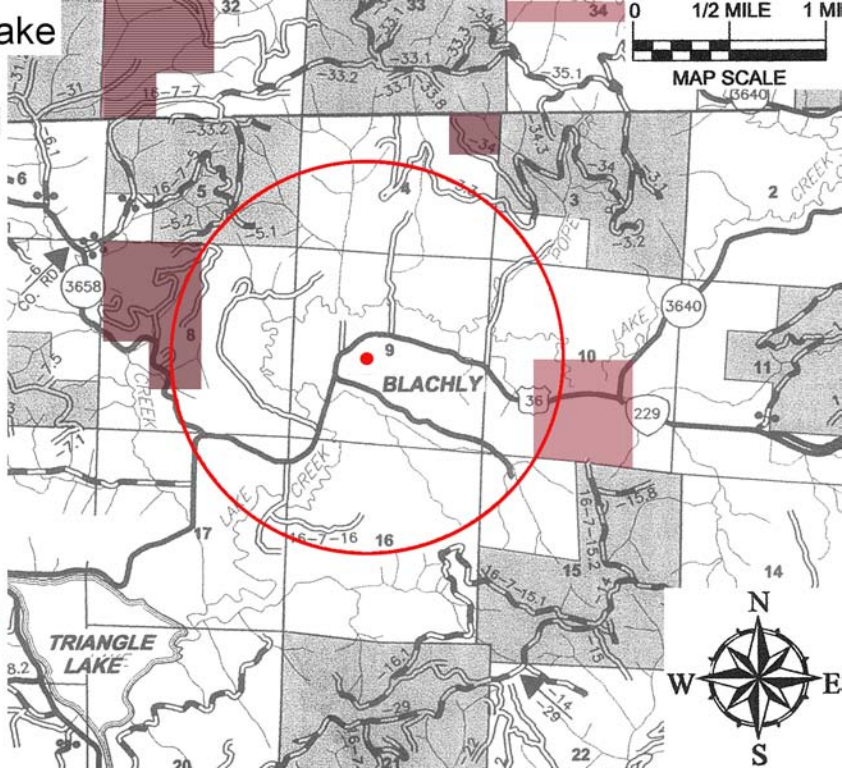


2002

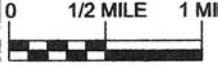


Triangle Lake School Legend

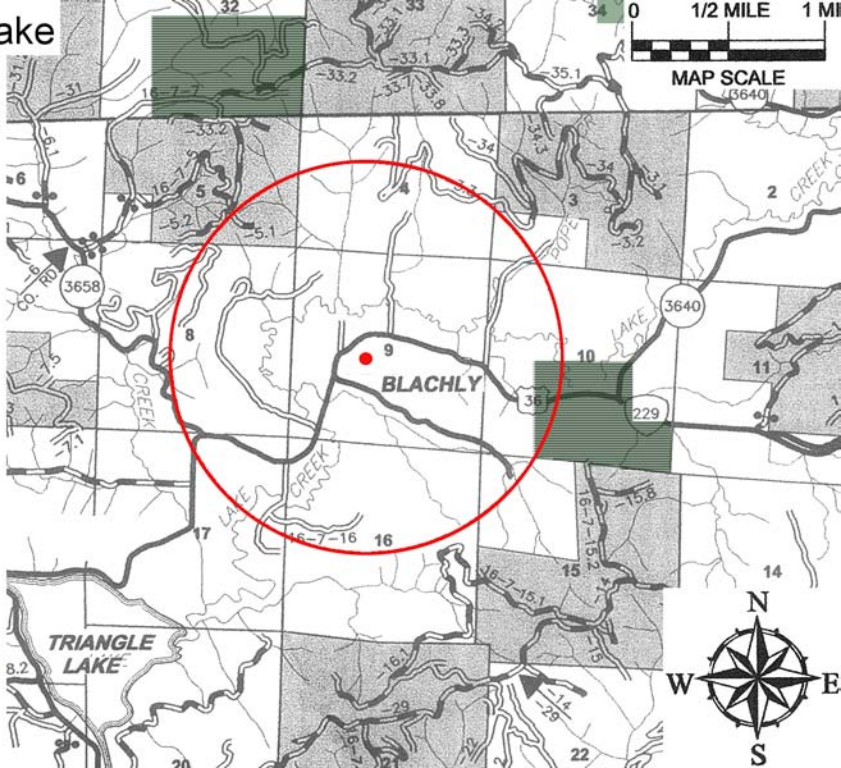
2003



Triangle Lake
School
Legend



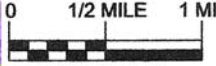
MAP SCALE
(3640)



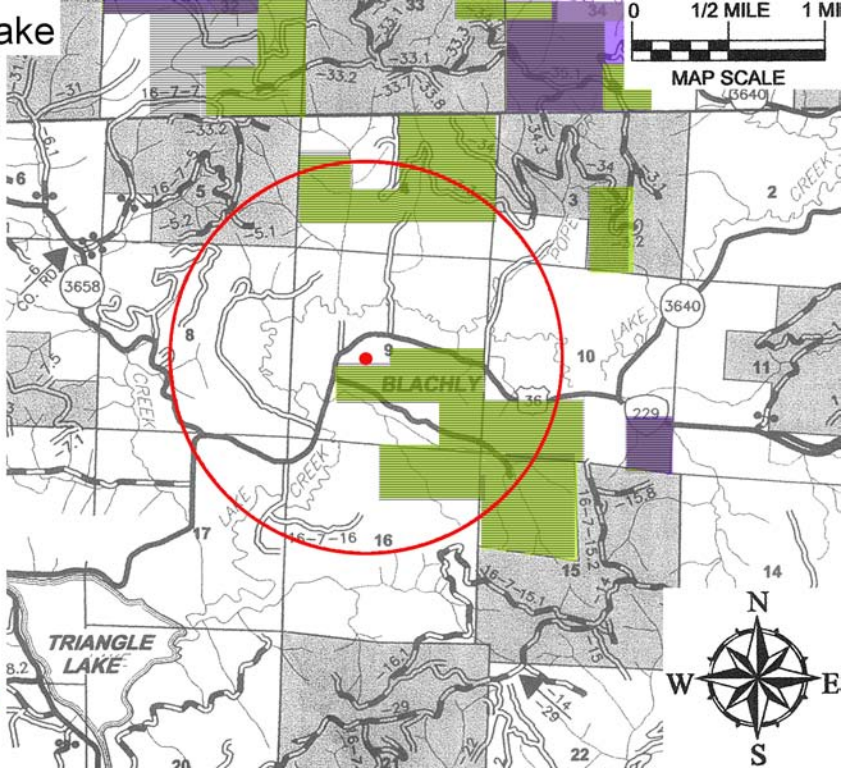
2004



Triangle Lake School Legend



MAP SCALE
(3640)

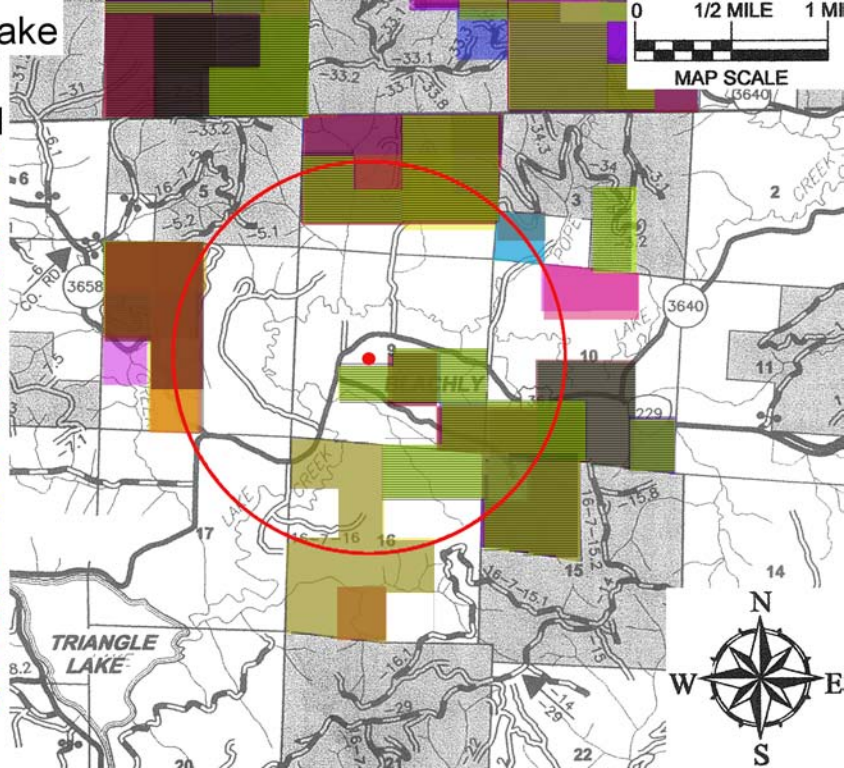


2006



Triangle Lake School Legend

- 1990
- 1991
- 1992
- 1993
- 1994
- 1995
- 1996
- 1997
- 1998
- 1999
- 2001
- 2002
- 2003
- 2004
- 2006





Oregon Toxics Alliance

P.O. Box 1106

Eugene OR 97440

Phone/Fax 465-8860

<http://www.oregontoxics.org/>

Forestland Dwellers

P.O. Box 5954

Eugene, OR 97405

Phone 342-8332

<http://www.forestlanddwellers.org/>