

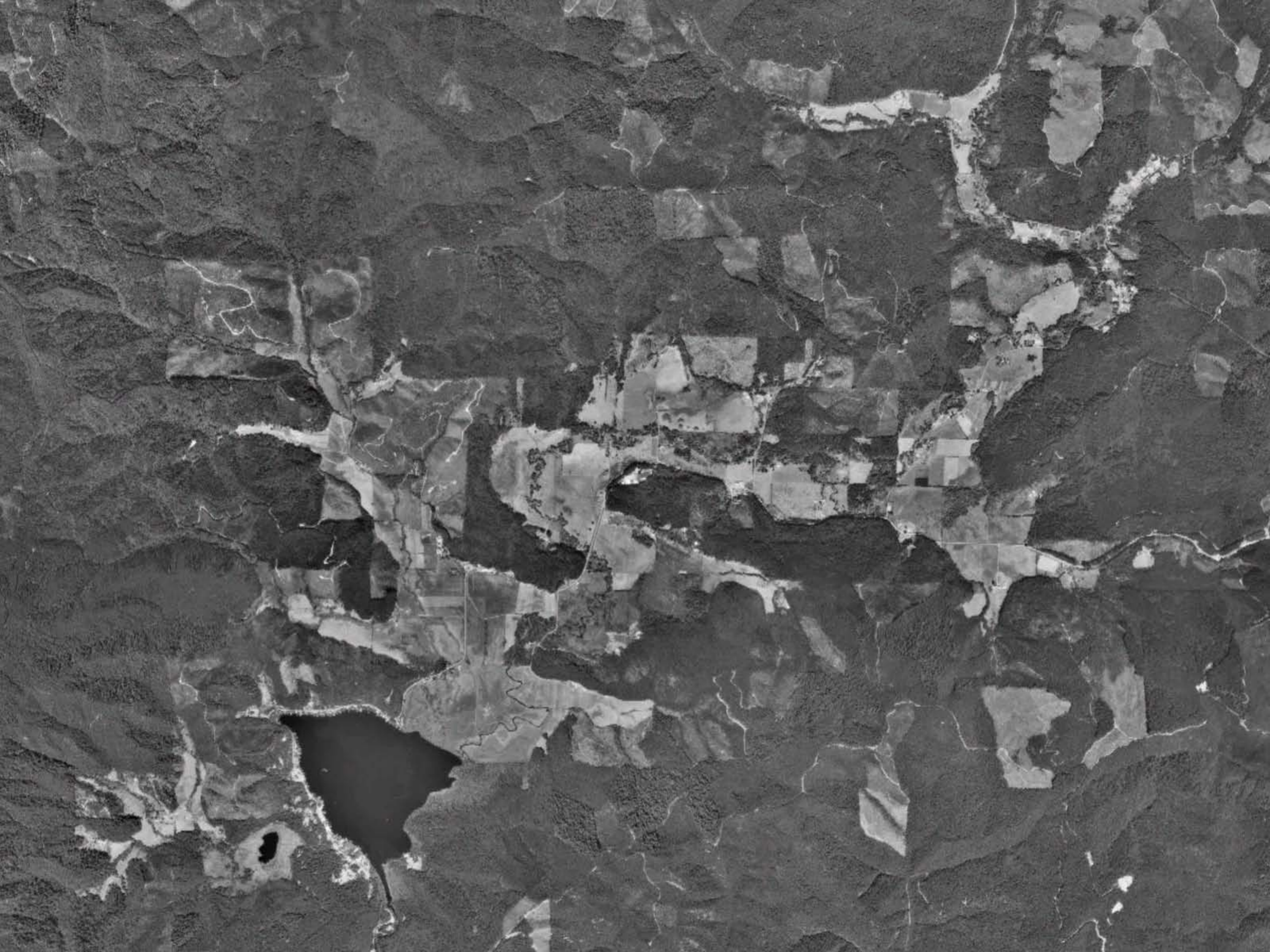
***Lane County Schools and Forestry Spray  
Mapping Project  
1990 – 2006***

**Triangle Lake School**  
Blachly School District ~ Blachly, Oregon

by Oregon Toxics Alliance and Forestland Dwellers

*Mapped using data from Oregon Department of Forestry  
Forest Activity Computerized Tracking System (FACTS)*





20264  
Blachly Grange Road

TL  
Welcome  
to  
Triangle Lake  
Schools

LAKER COUNTRY

### Class Motto

Over the years we've seen  
losses and gains,  
but through it all we've  
held together.

Dedicated by  
Class of 2004







POST RD

STOP





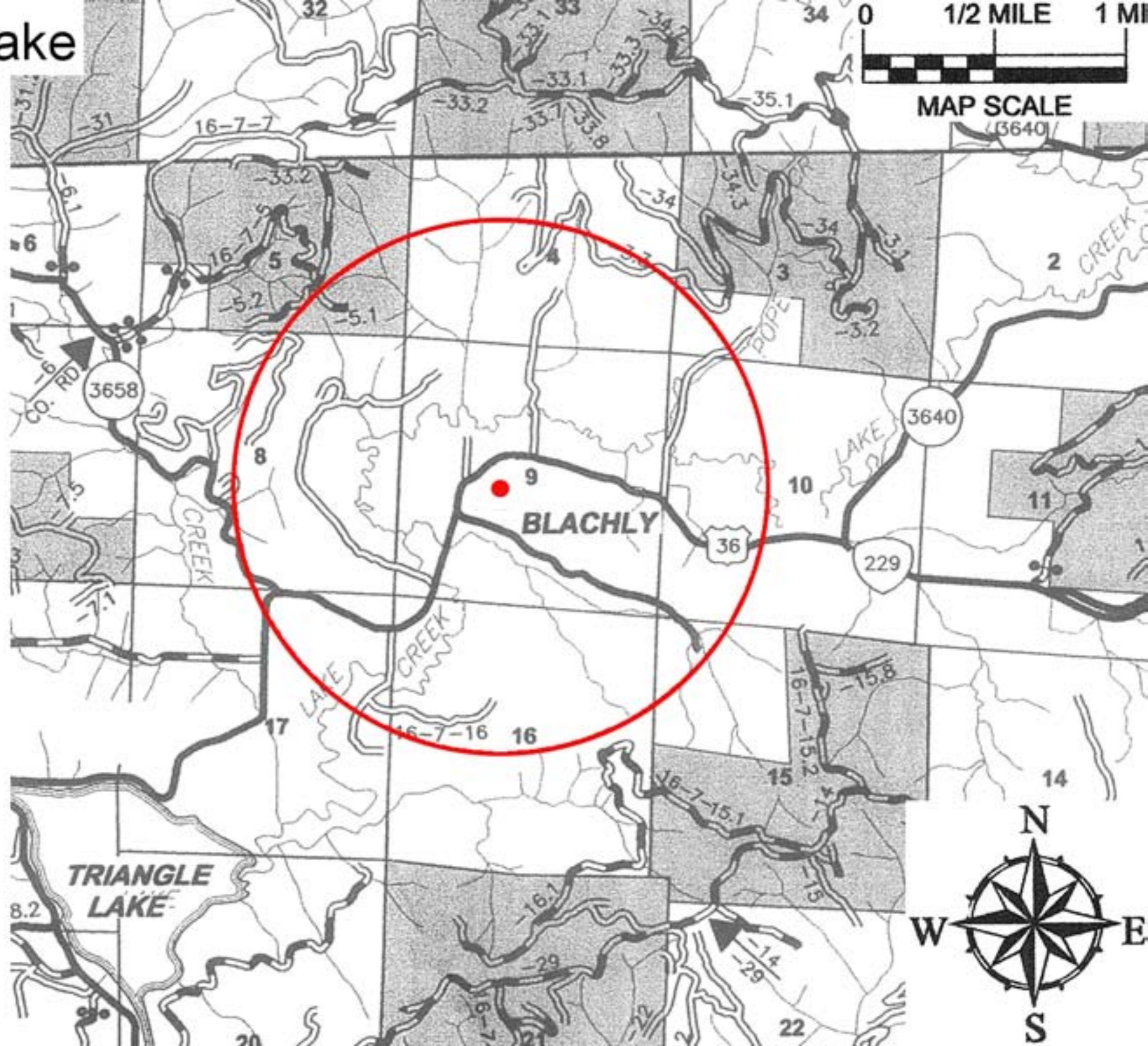
# Map Notes

Red Dot is School Location

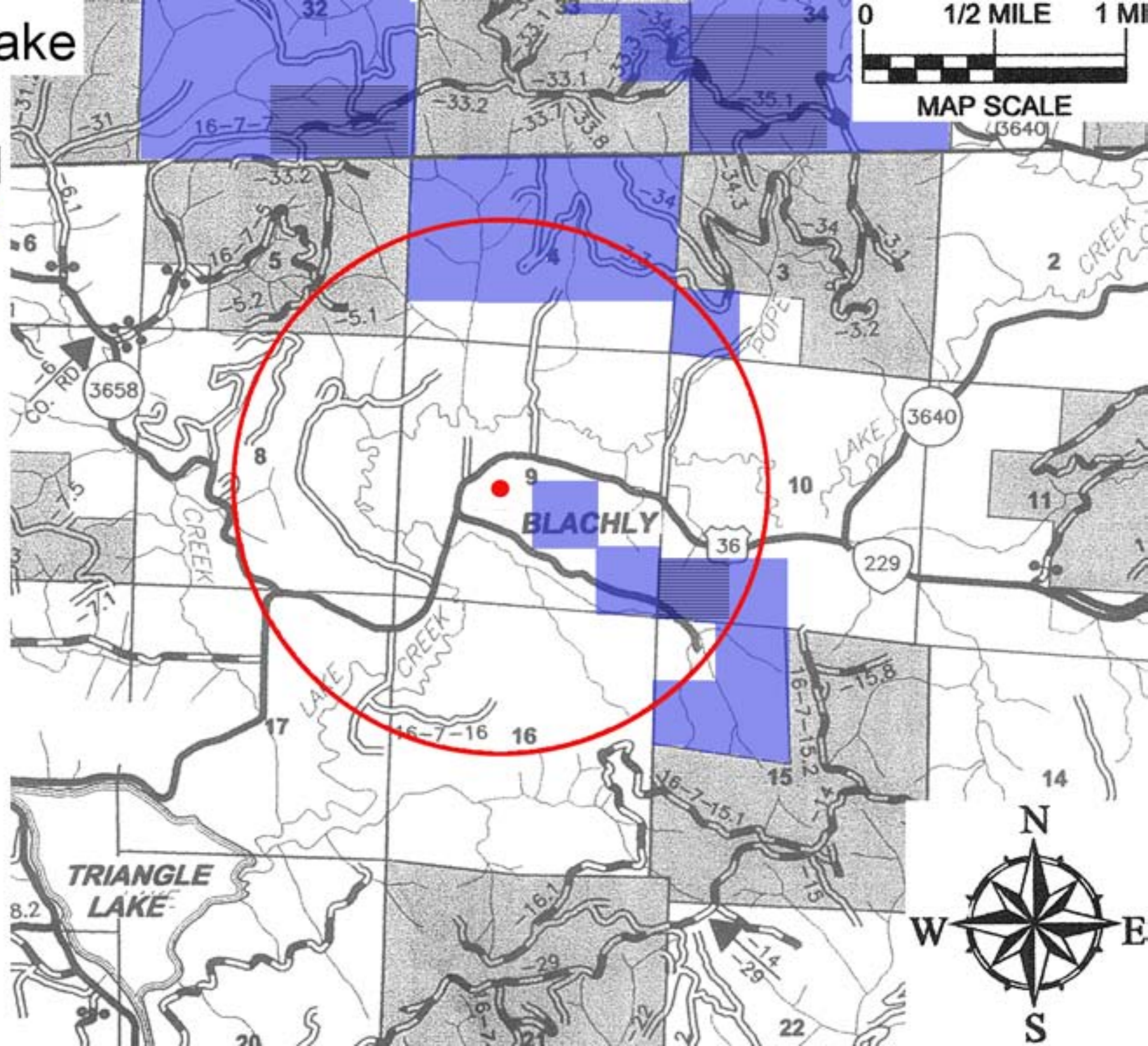
Red Circle is proposed  
1 mile radius buffer

Colored Areas are Sprayed

# Triangle Lake School

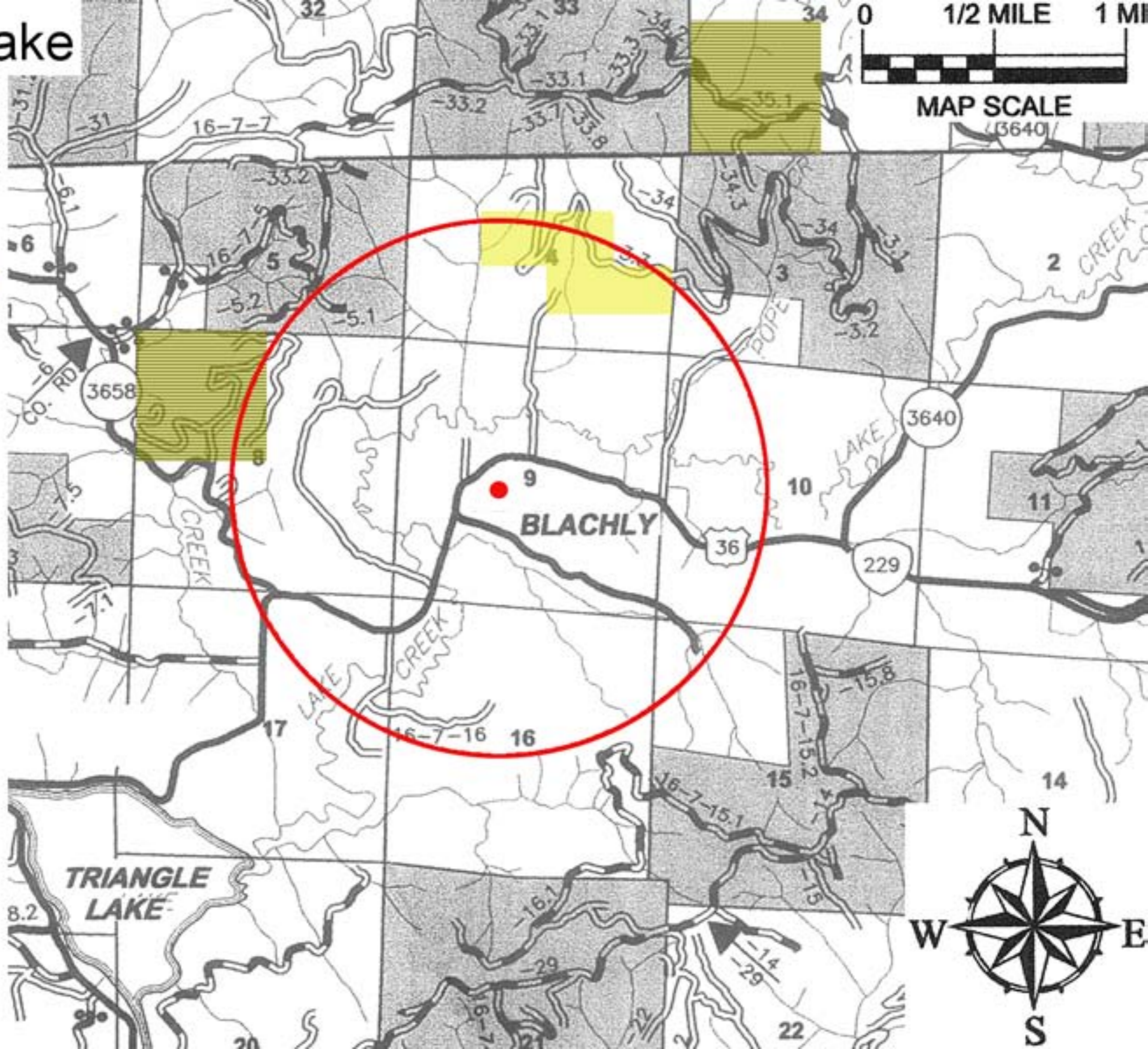


# Triangle Lake School Legend 1990



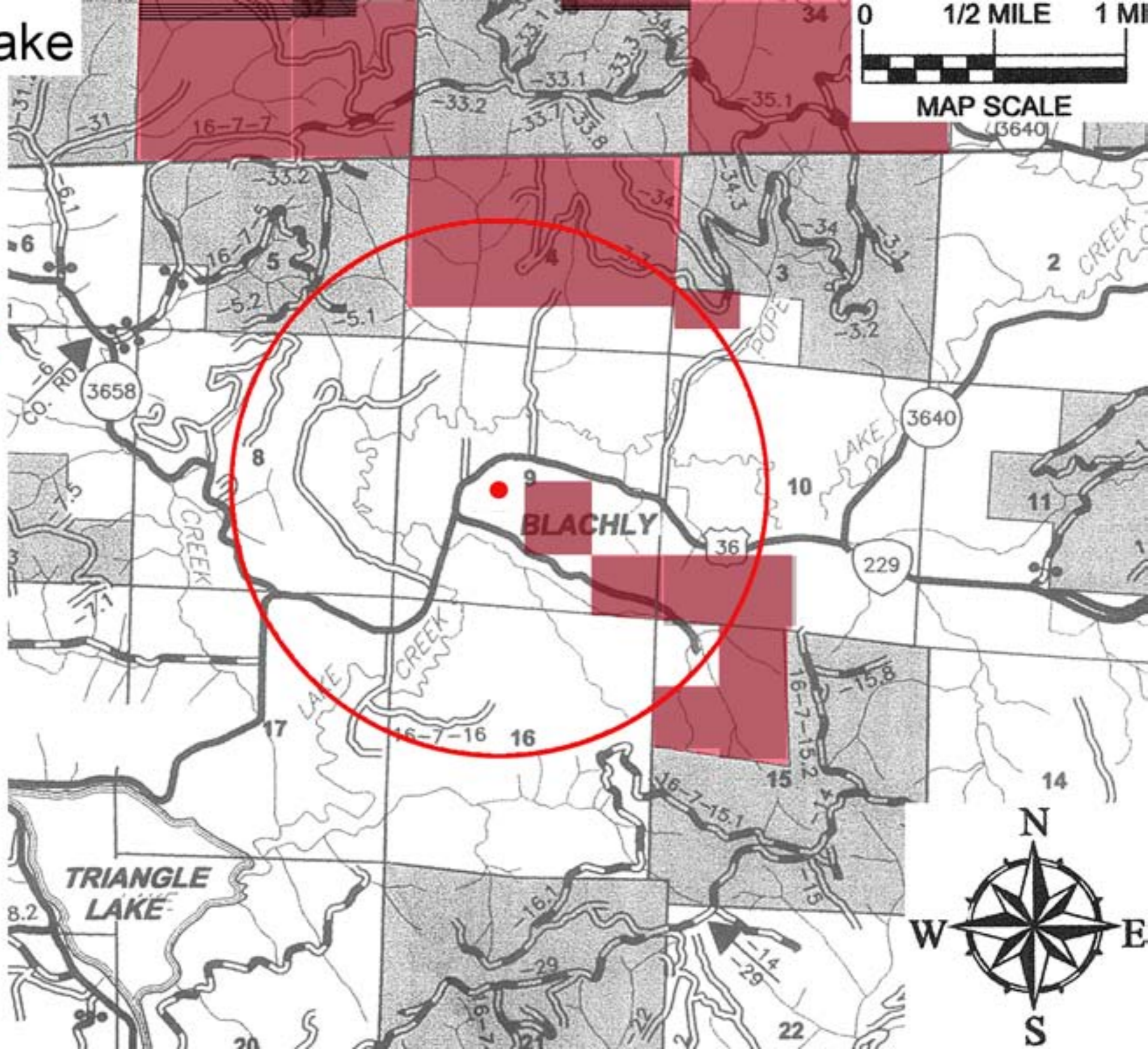
# Triangle Lake School Legend

1991



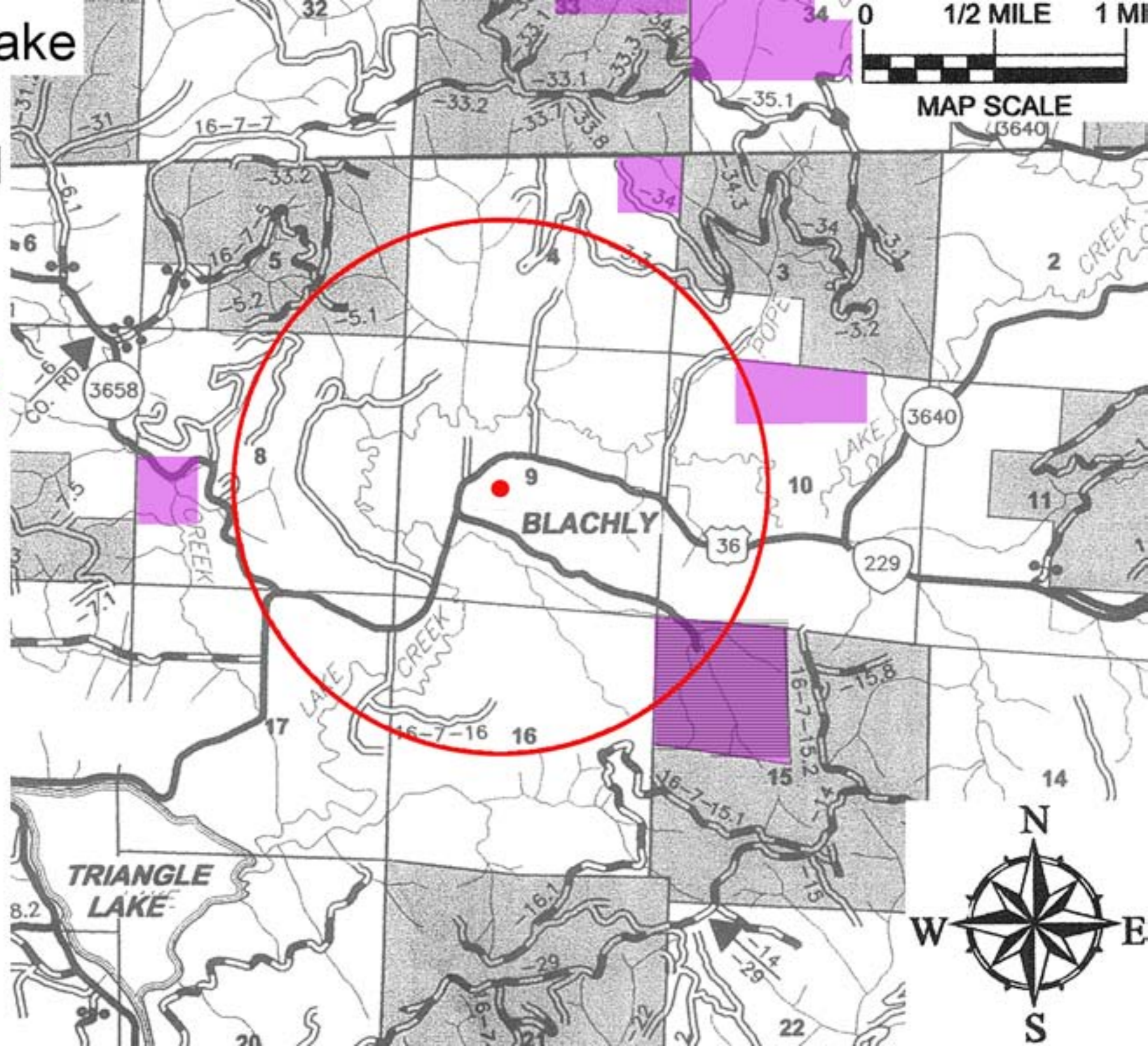
# Triangle Lake School Legend

1992

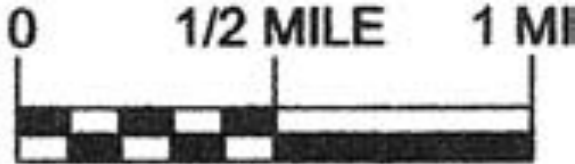


# Triangle Lake School Legend

1993

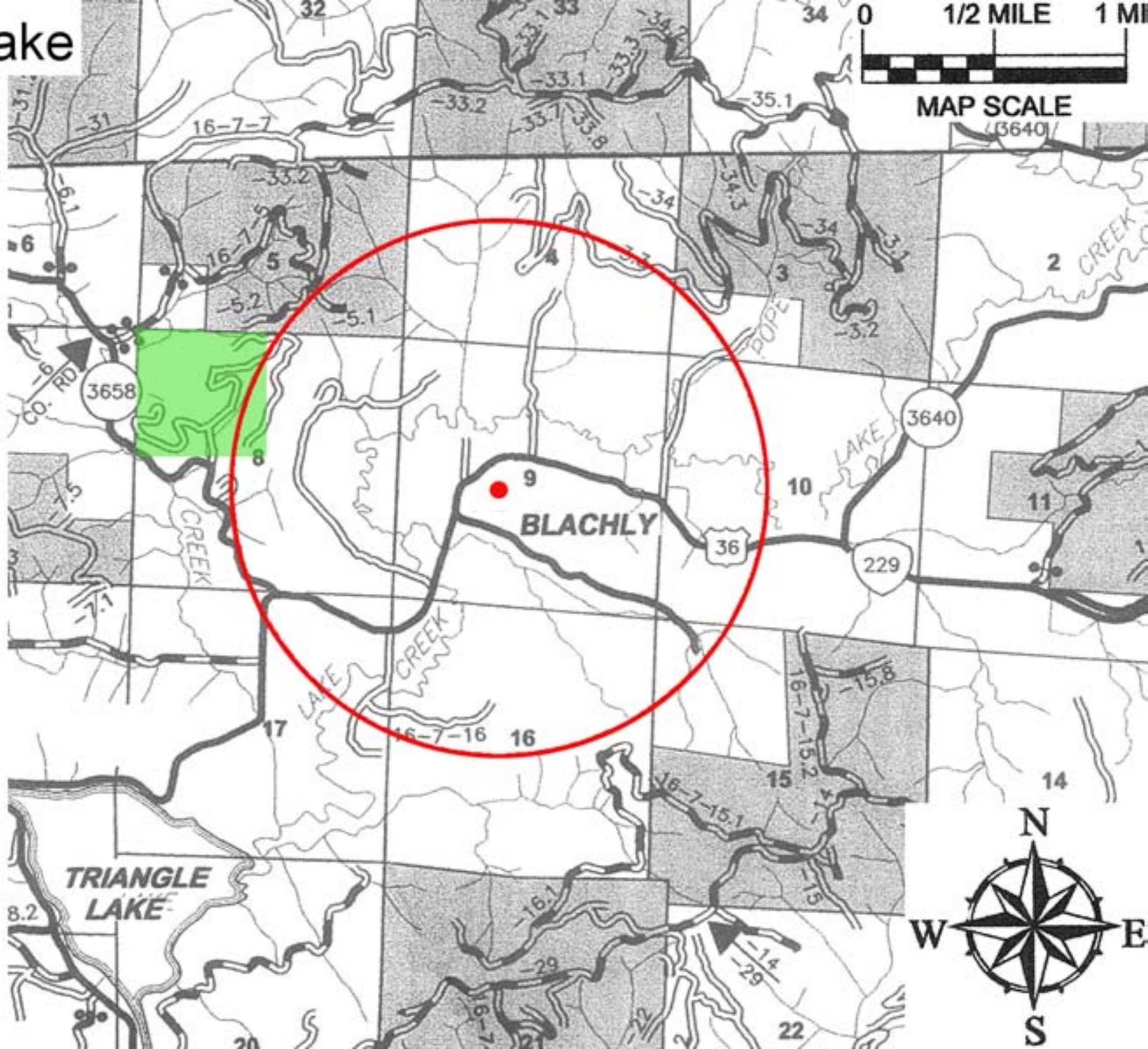


# Triangle Lake School Legend



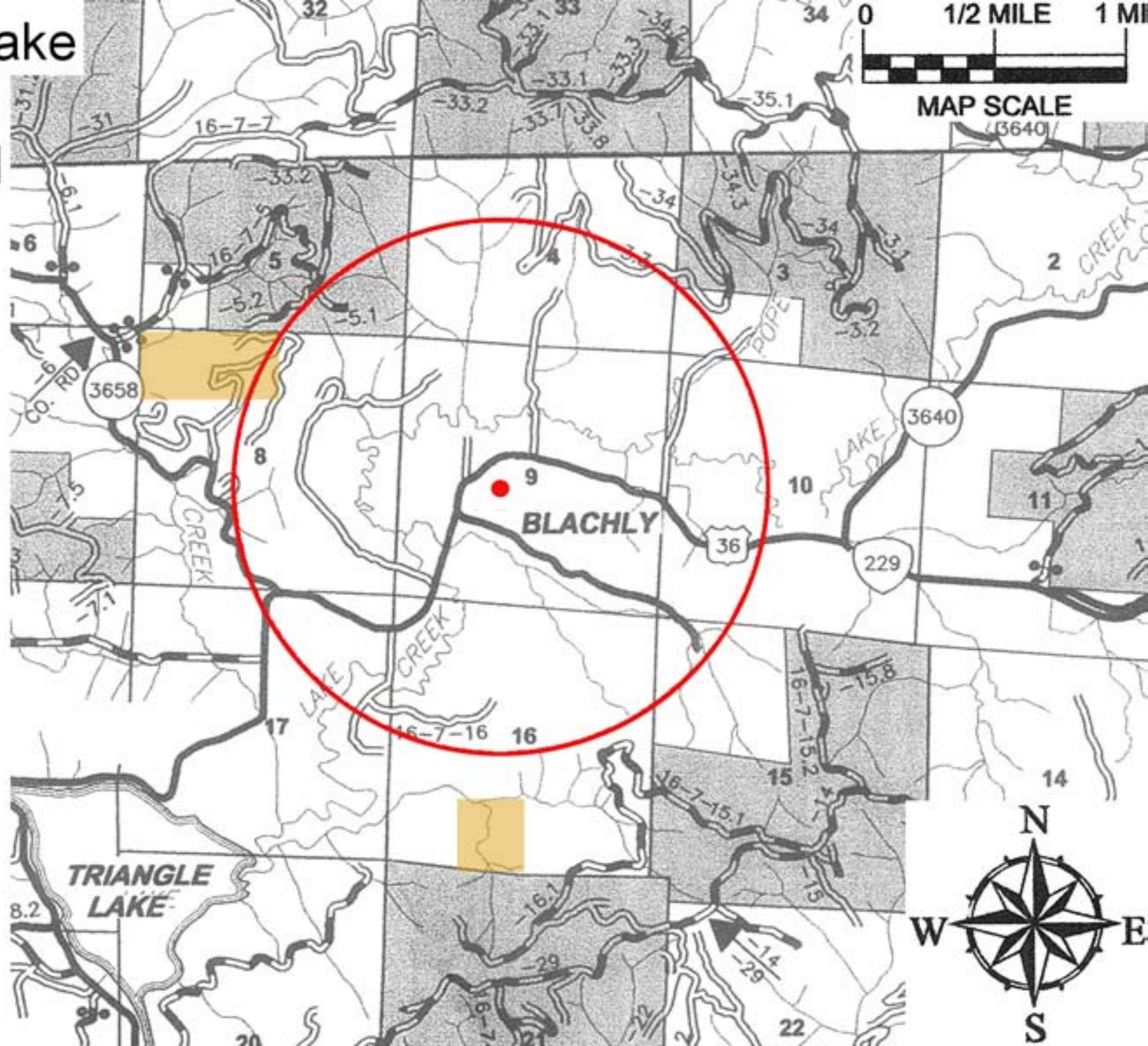
MAP SCALE  
(3640)

1994



# Triangle Lake School Legend

1995

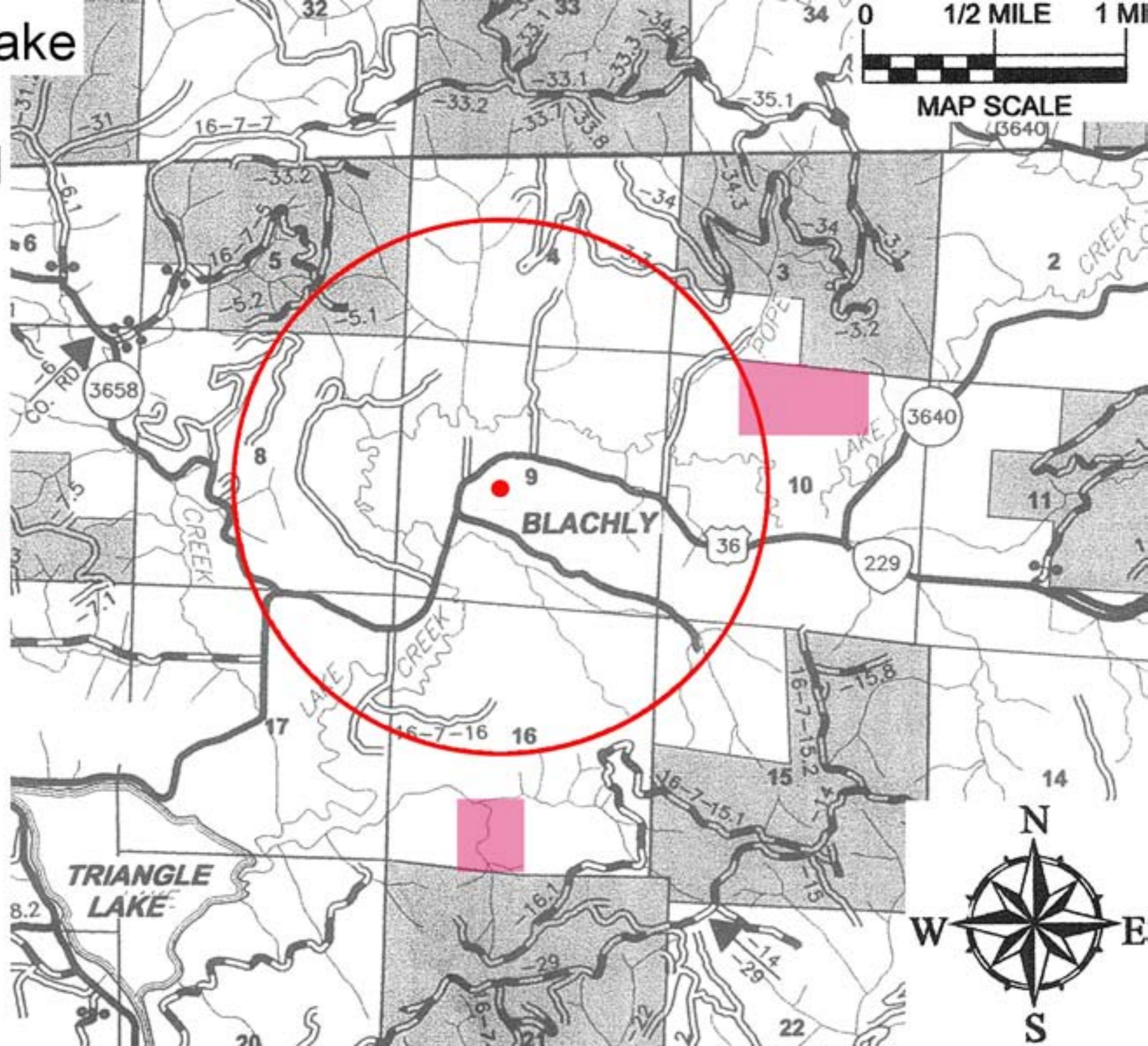




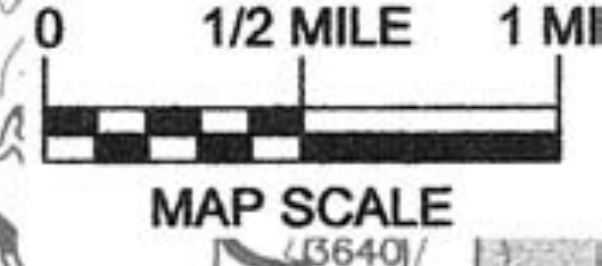
# Triangle Lake School Legend



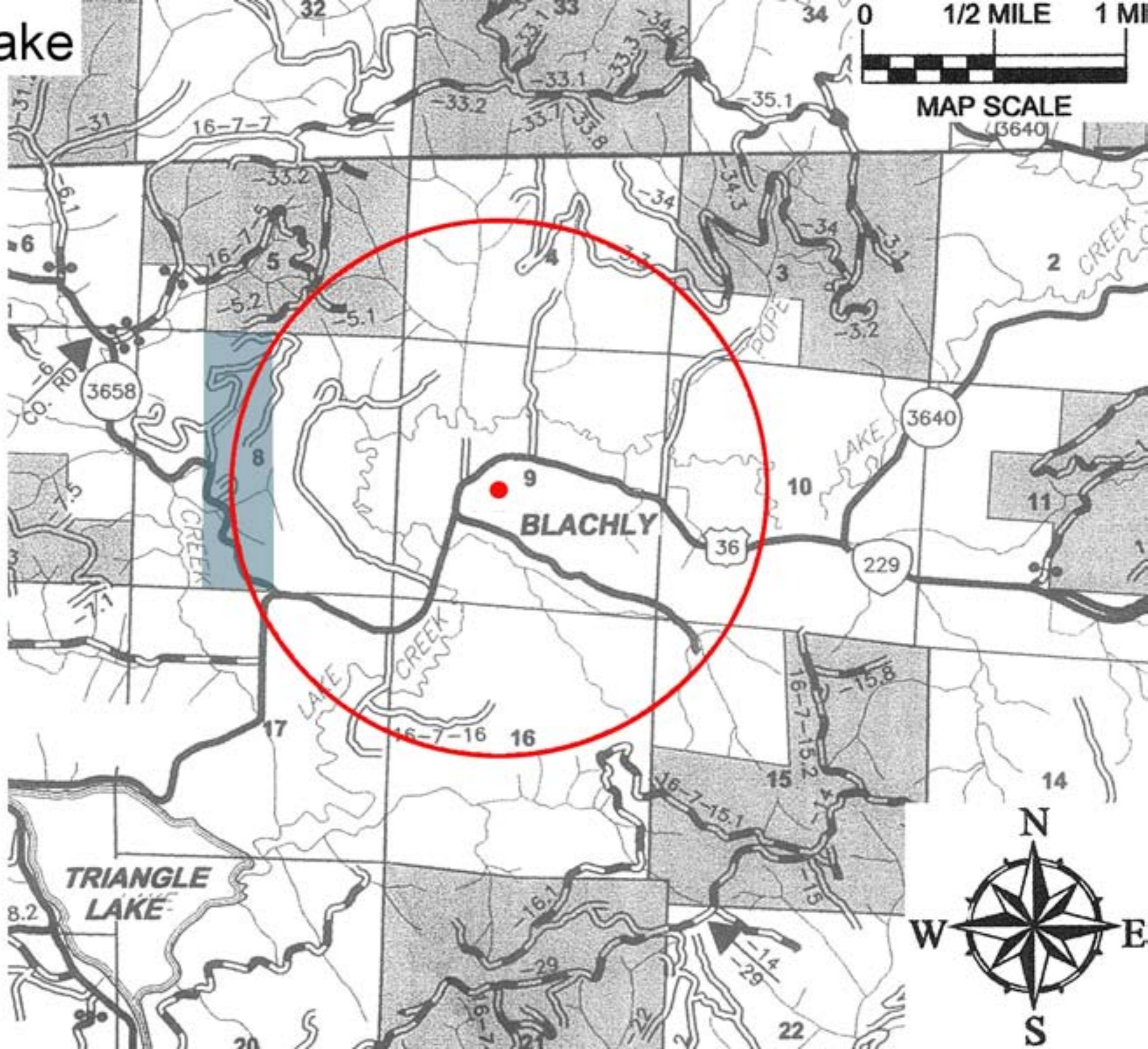
1996



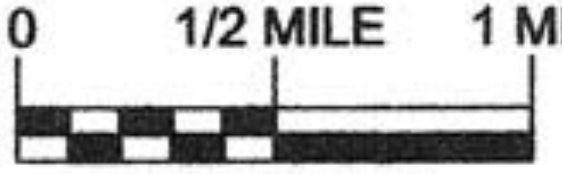
# Triangle Lake School Legend



1997

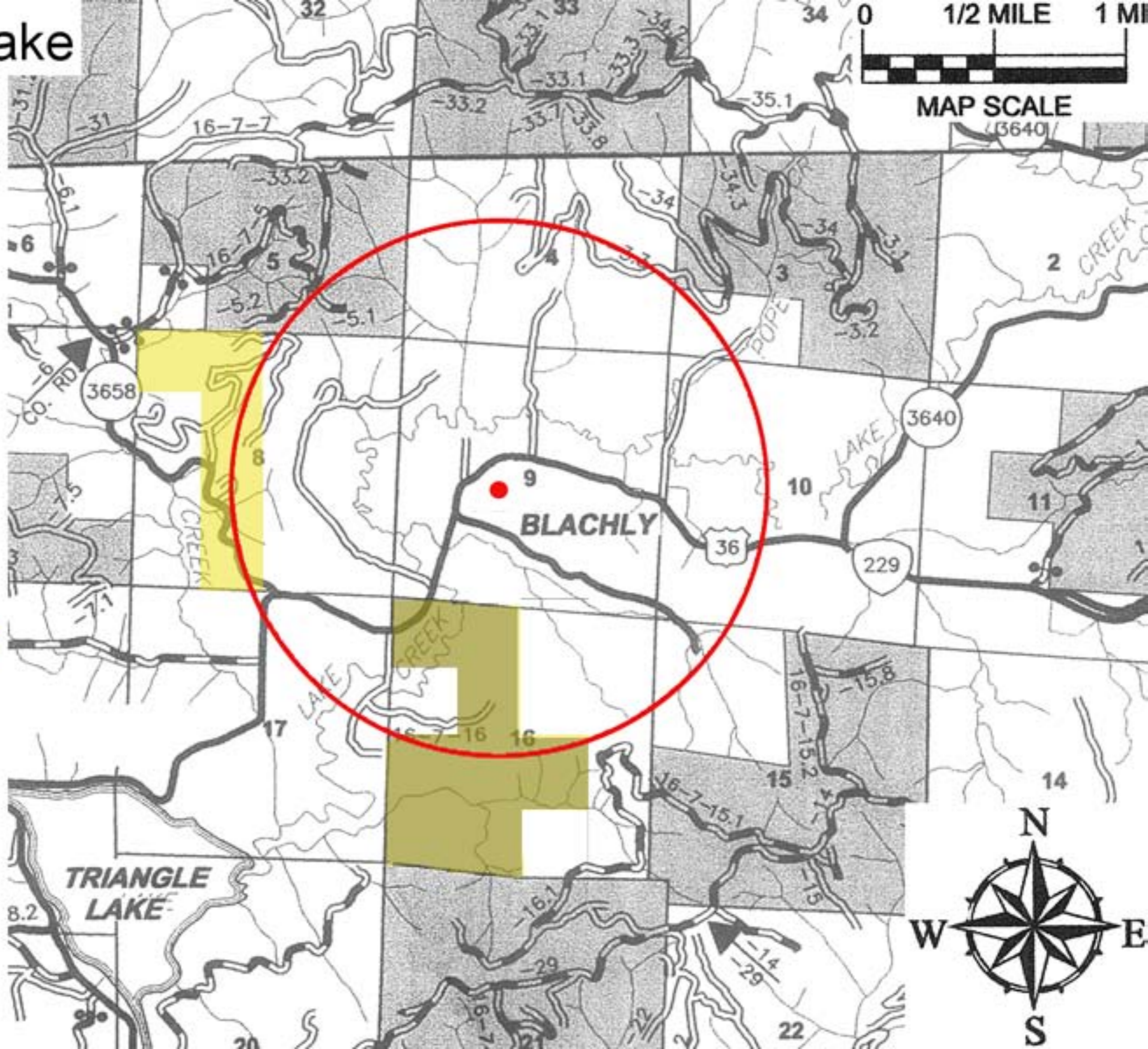


# Triangle Lake School Legend

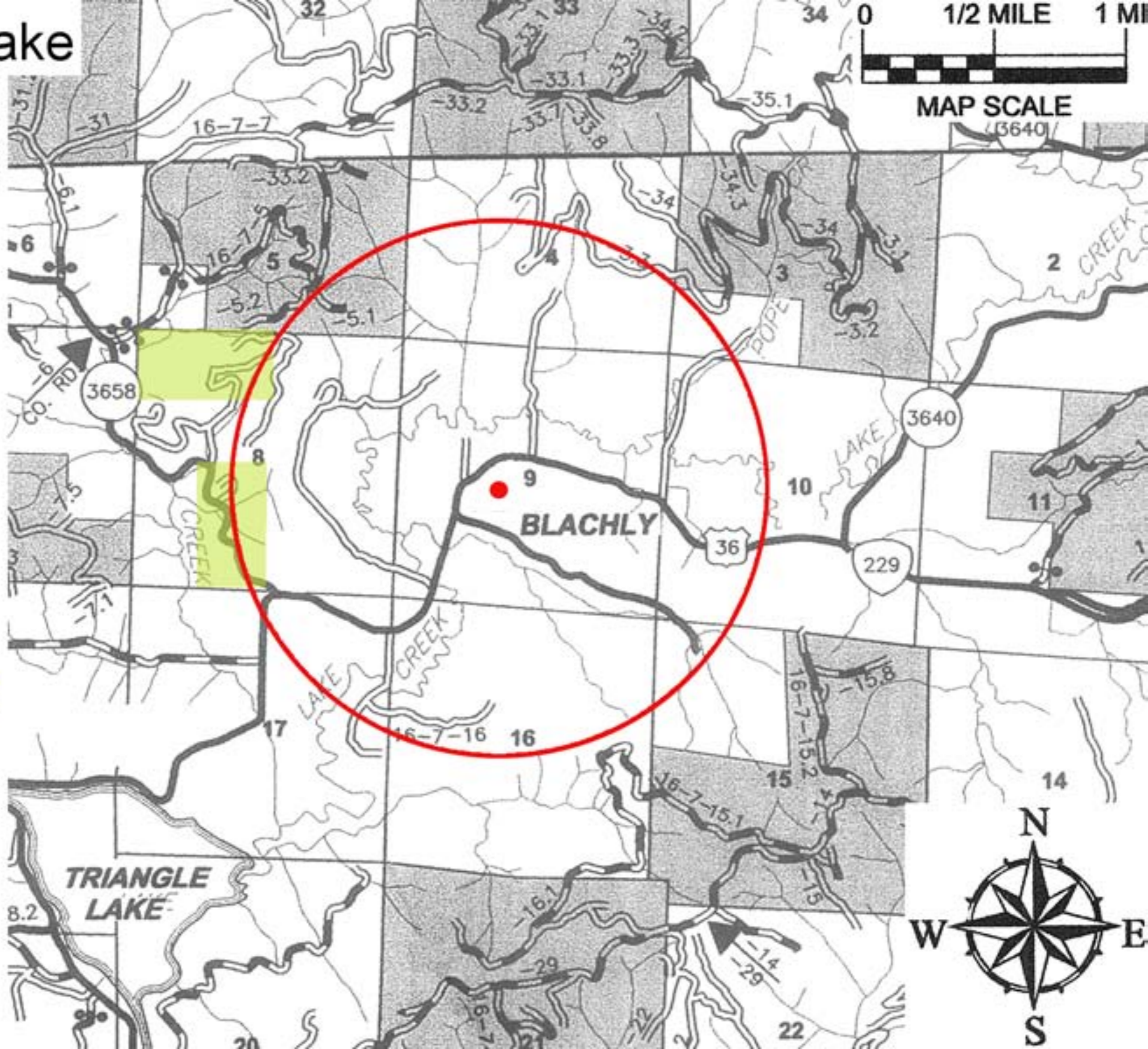
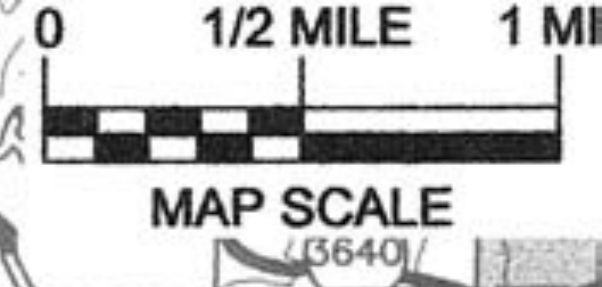


MAP SCALE  
(3640)

1998

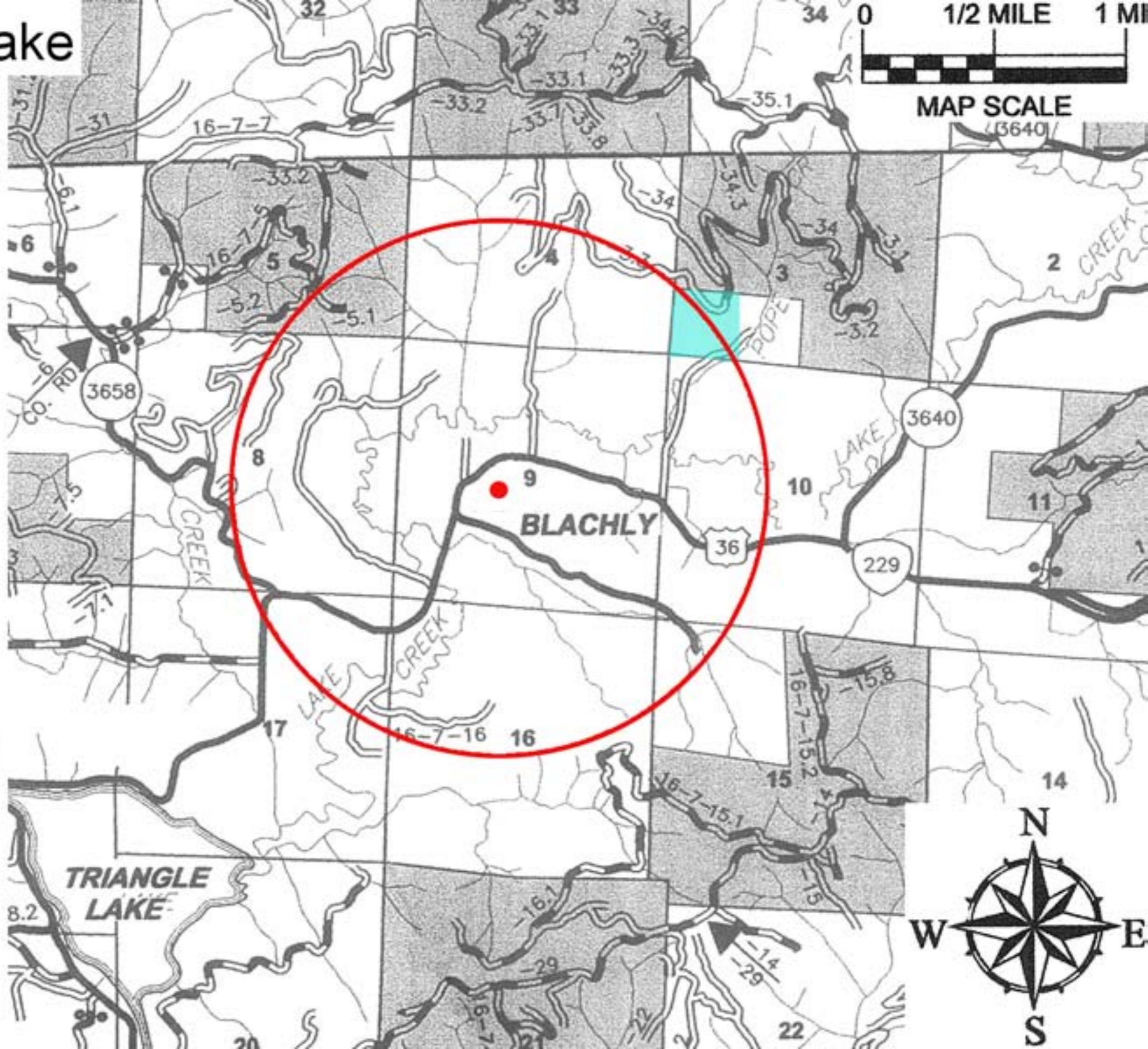
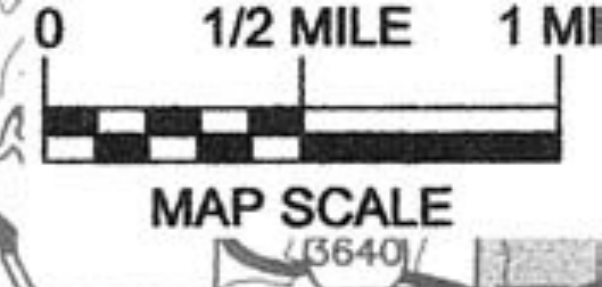


# Triangle Lake School Legend



1999

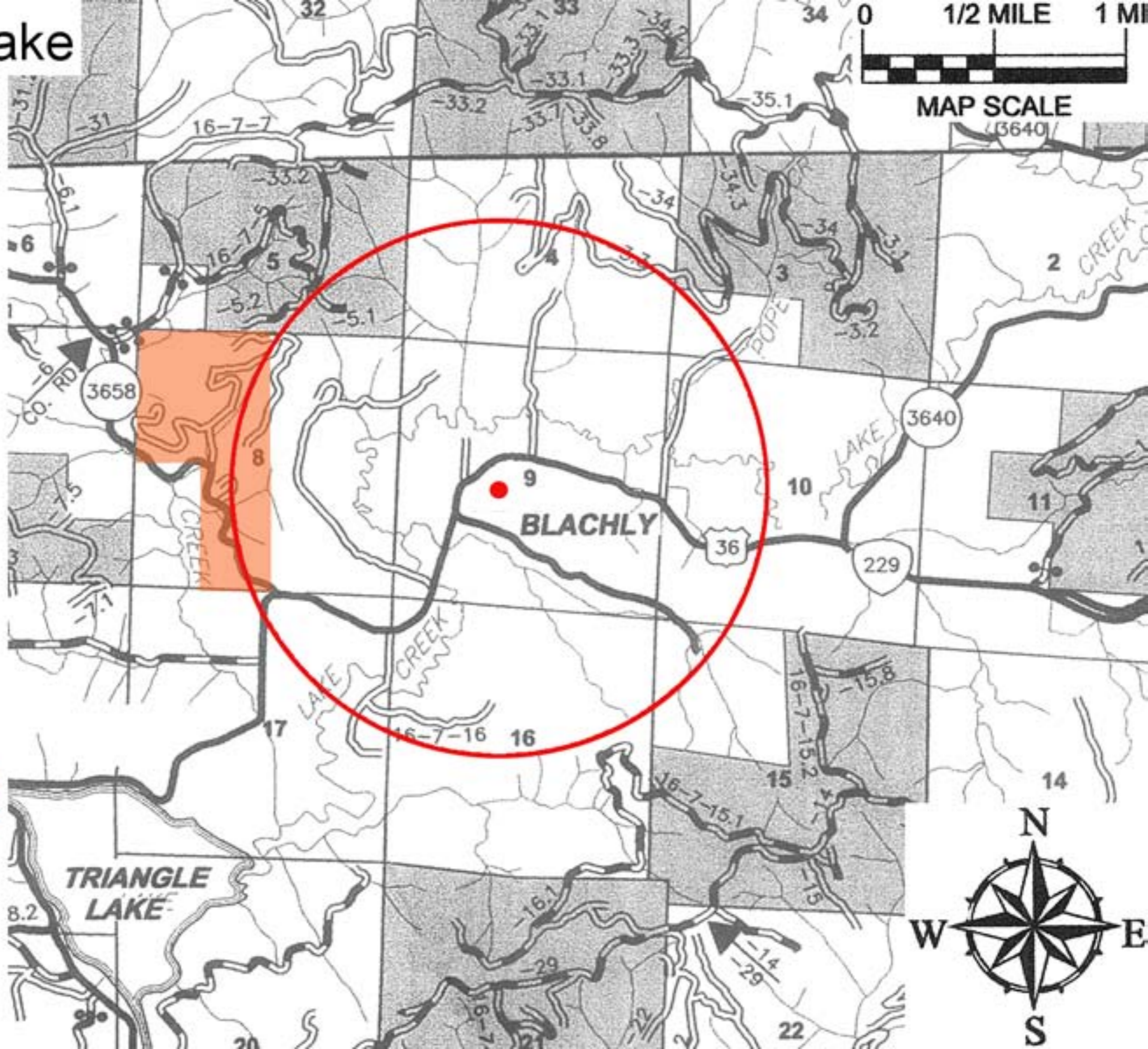
# Triangle Lake School Legend



2001



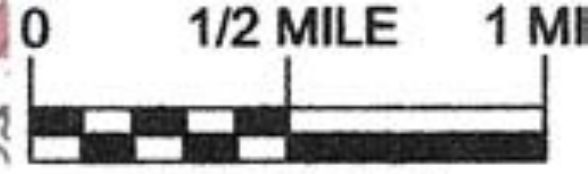
# Triangle Lake School Legend



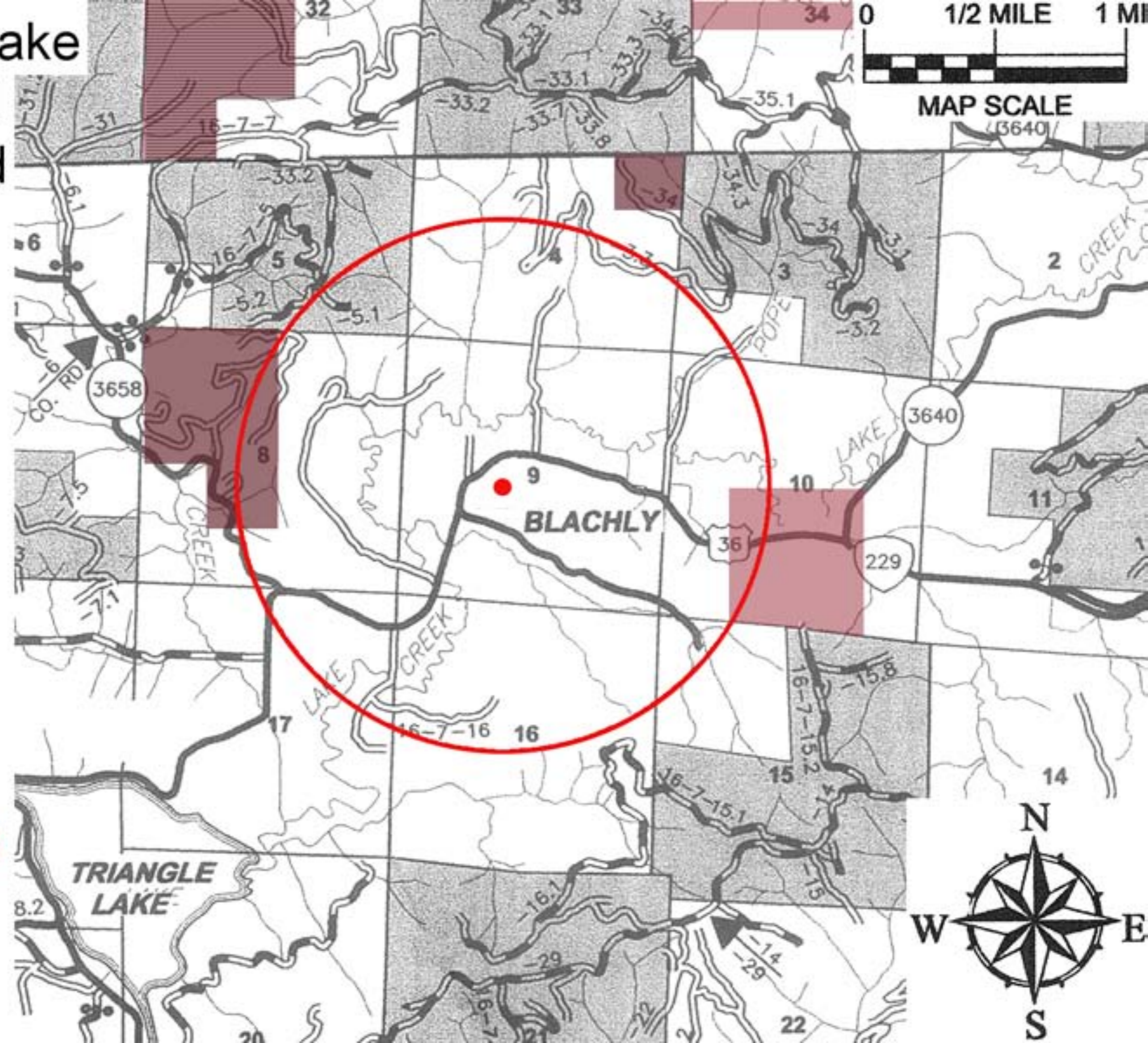
2002



# Triangle Lake School Legend



MAP SCALE  
(3640)

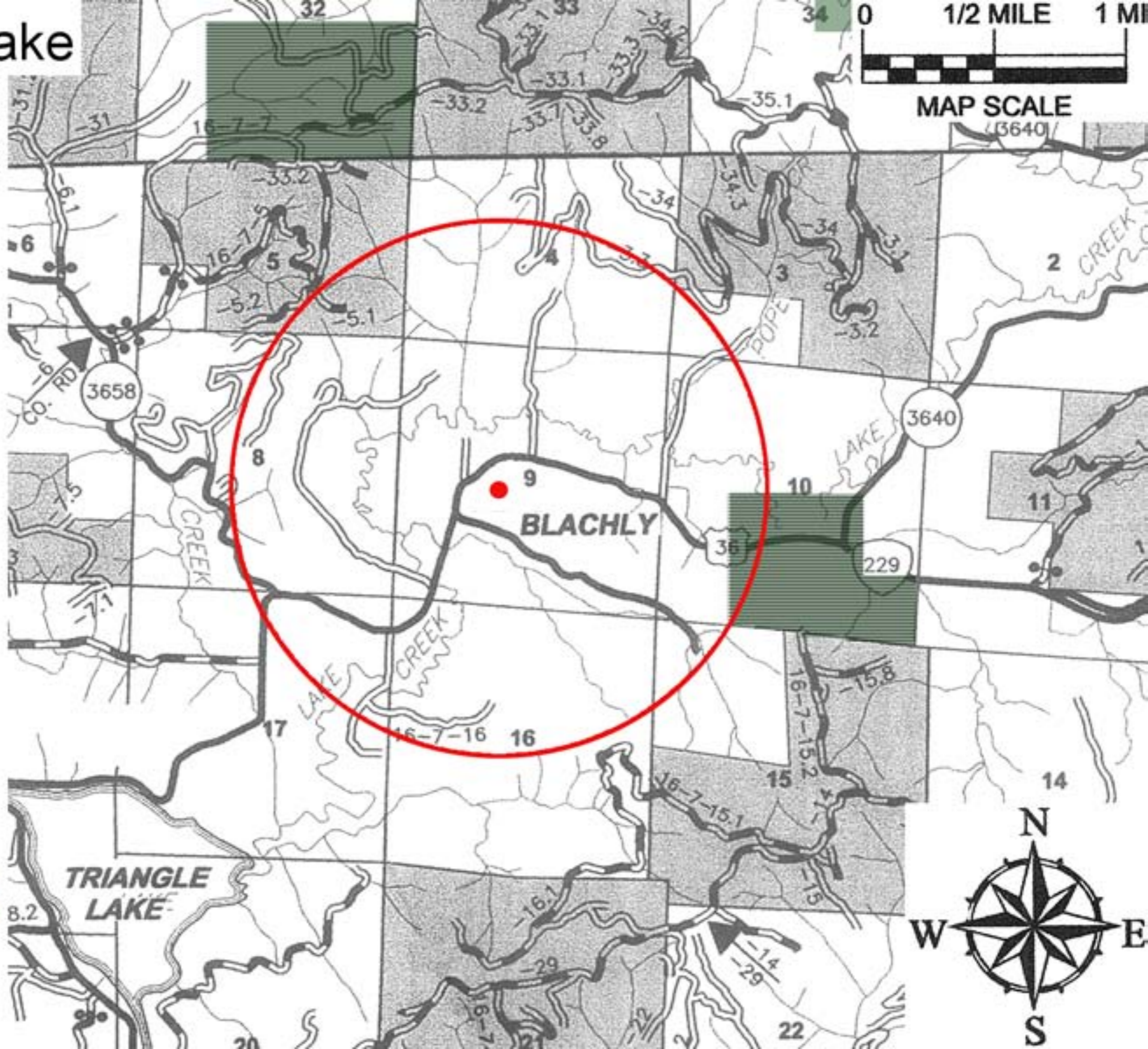
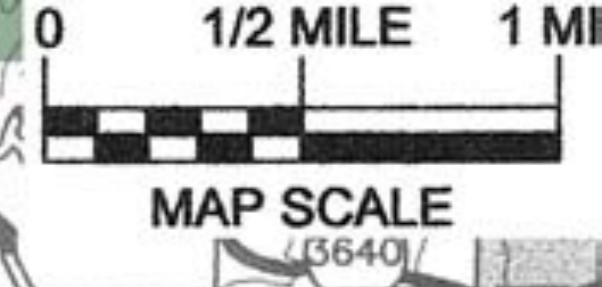


2003

TRIANGLE LAKE

BLACHLY

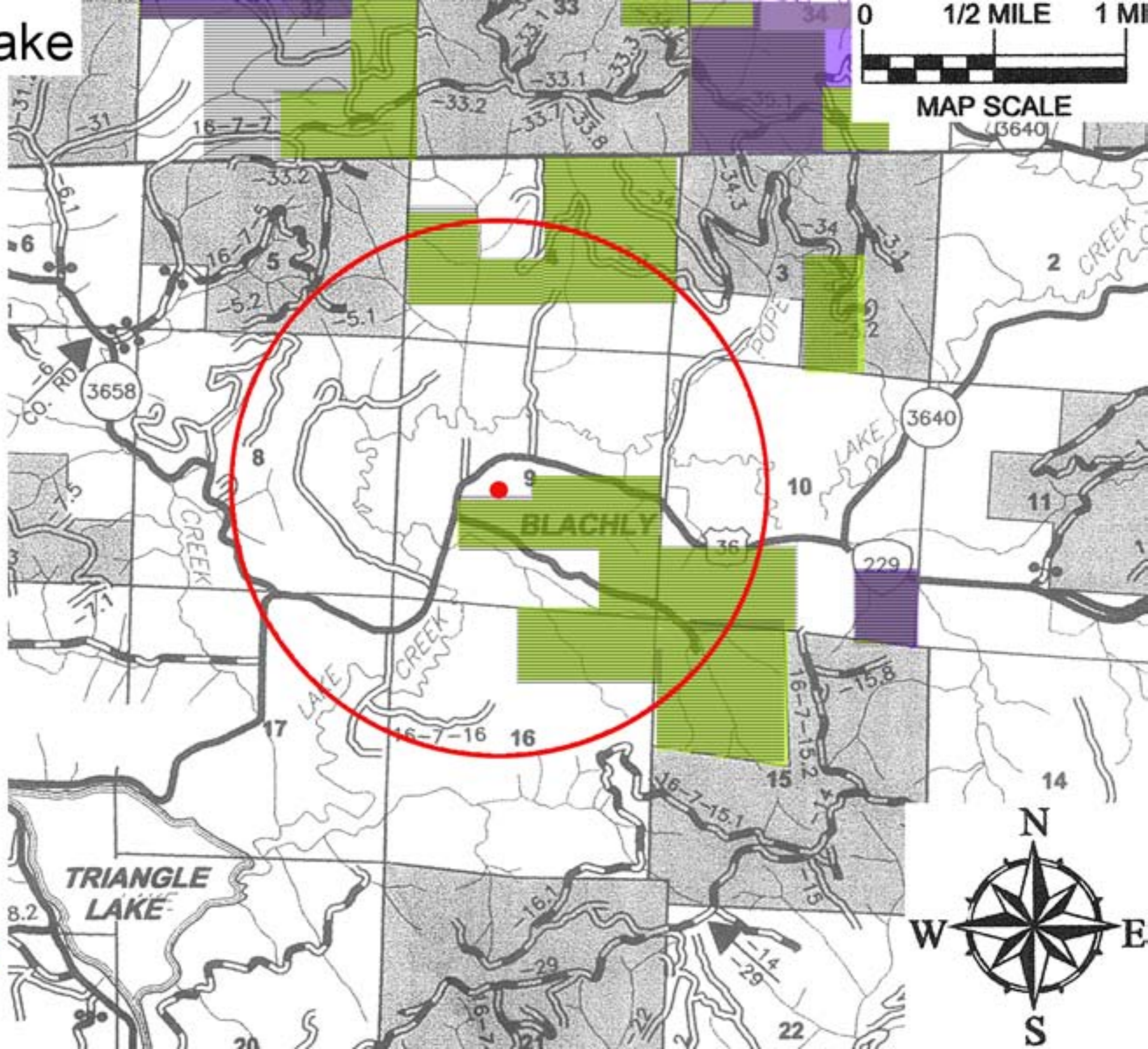
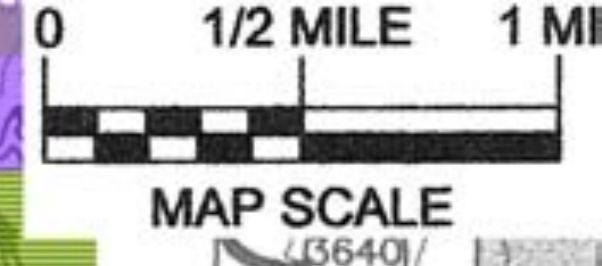
# Triangle Lake School Legend



2004



# Triangle Lake School Legend

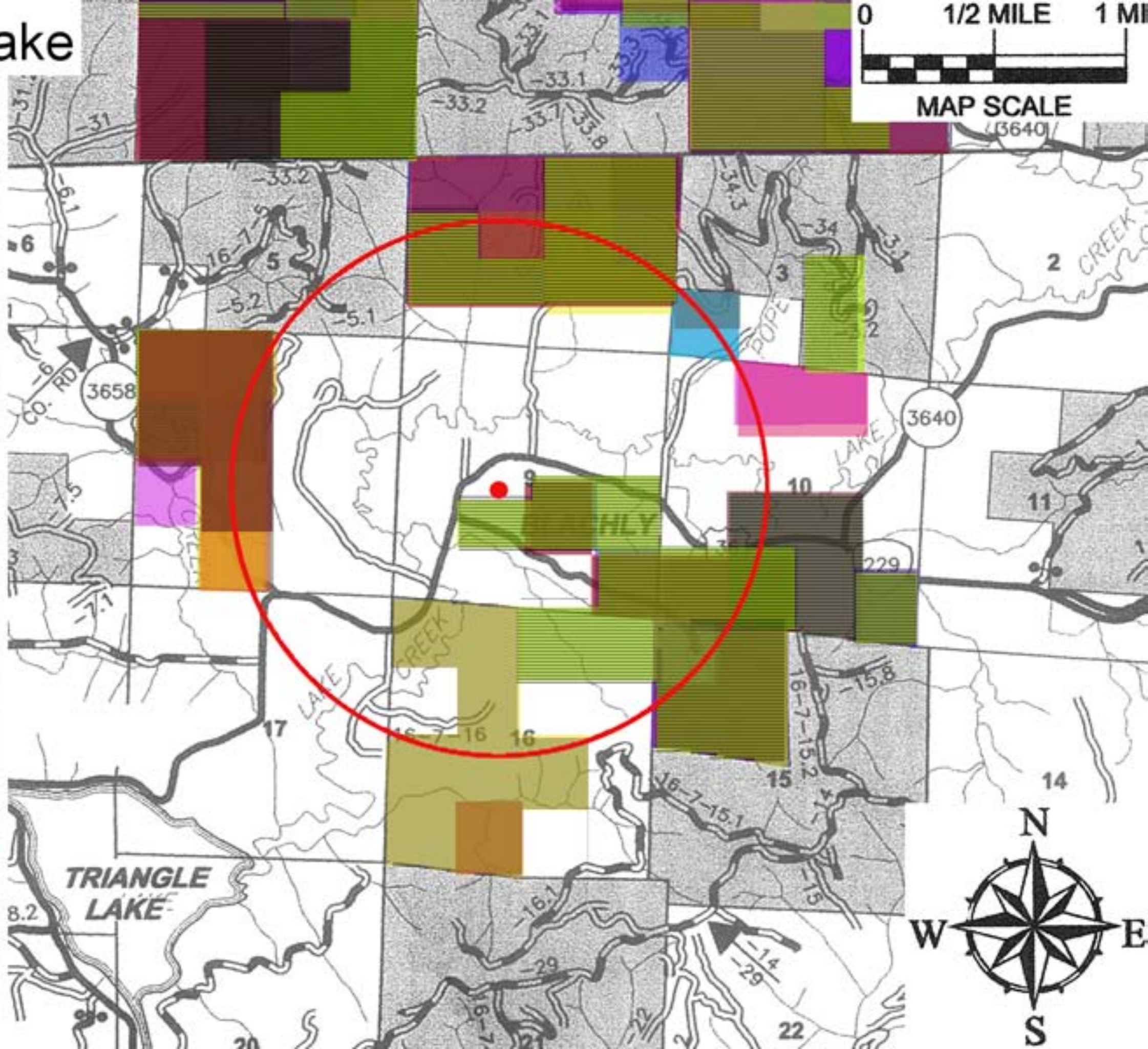


2006



# Triangle Lake School Legend

- 1990
- 1991
- 1992
- 1993
- 1994
- 1995
- 1996
- 1997
- 1998
- 1999
- 2001
- 2002
- 2003
- 2004
- 2006





# **Oregon Toxics Alliance**

P.O. Box 1106

Eugene OR 97440

Phone/Fax 465-8860

<http://www.oregontoxics.org/>

# **Forestland Dwellers**

P.O. Box 5954

Eugene, OR 97405

Phone 342-8332

<http://www.forestlanddwellers.org/>