

# RUSTEL CREEK RIPARIAN PLAN

LEAVE ALL TREES WITHIN 70' OF HIGH WATER.

LOGGING WILL BE CARRIED AWAY FROM CREEK.

CABLES WILL BE ACROSS THE CREEK. RESPOOL CABLE BETWEEN ROADS.

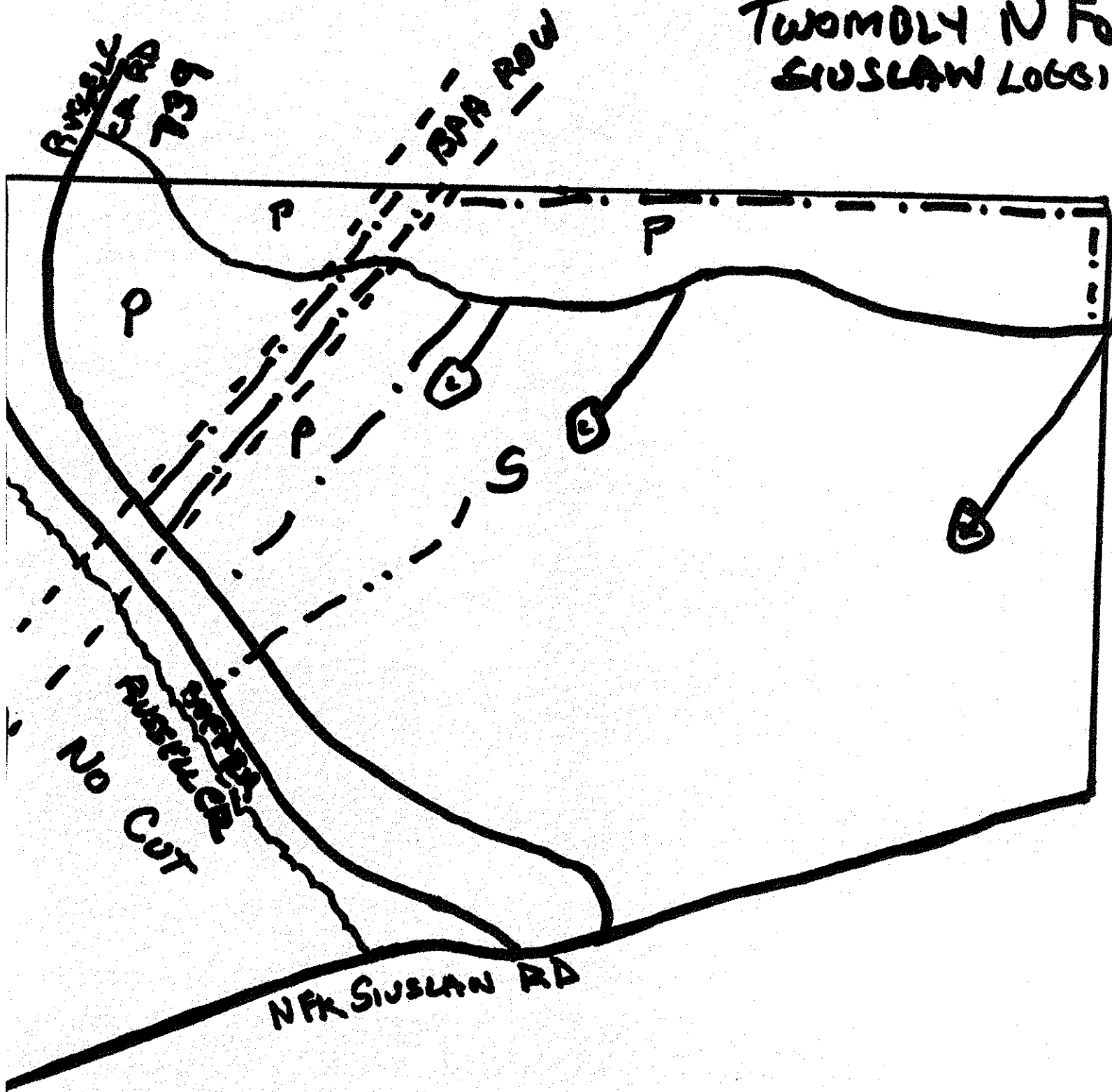
BURN AND REPLANT WITHIN 100 FEET. WITHOUT BURNING THE BUFFER.

BURNING WILL BE DONE WHEN RIPARIAN BUFFER MOISTURE IS HIGH ENOUGH TO PREVENT BURNING IN THE BUFFER.

FALLING WILL BE DONE WITH AN EFFORT TO KEEP ALL LOGS OUT OF 70' BUFFER.

R. D. Young

TWOMBLY N Fd  
SIUSLAN LOGG



P = PILE SLASH  
--- = CAT TRAIL  
S = PROTECT SPRING  
- - - - - = WATER PIPE